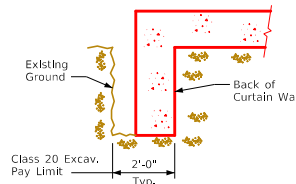
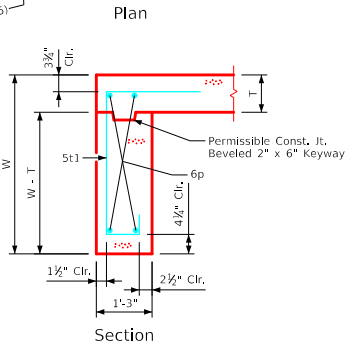
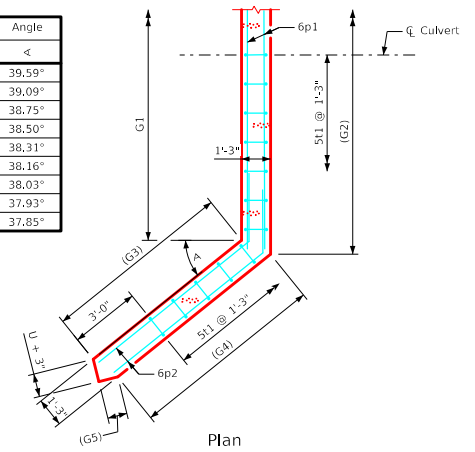


Plan View - Top & Bottom of Apron Reinforcing



Curtain Wall
Class 20 Excavation

Culvert Height (H)	Angle
4'	39.59°
5'	39.09°
6'	38.75°
7'	38.50°
8'	38.31°
9'	38.16°
10'	38.03°
11'	37.93°
12'	37.85°



Section
Curtain Wall Details

- Notes:
1. Bar spacings and positions shown are similar for all sizes of headwalls in this standard.
 2. Wingwall bars consistently referenced from end of wing for all headwalls.
 3. Top transverse floor bars are referenced approximately 4" from the back of the parapet for all headwalls.
 4. There are no 5c8 bars in the 4' & 5' height headwalls.
 5. 4c2 bars used only in the 9', 10', 11' & 12' height headwalls.
 6. For dimension table see Sheet TWFH 0-1-21.
 7. For reinforcing in curtain wall see "Curtain Wall Details" this sheet.

LATEST REVISION DATE	APPROVED BY BRIDGE ENGINEER		
		Standard Design - Twin Reinforced Concrete Box Culverts	
		Flared Wing Headwalls February, 2021	
		Apron & Curtain Wall Details 0° Skew	TWFH 0-2-21