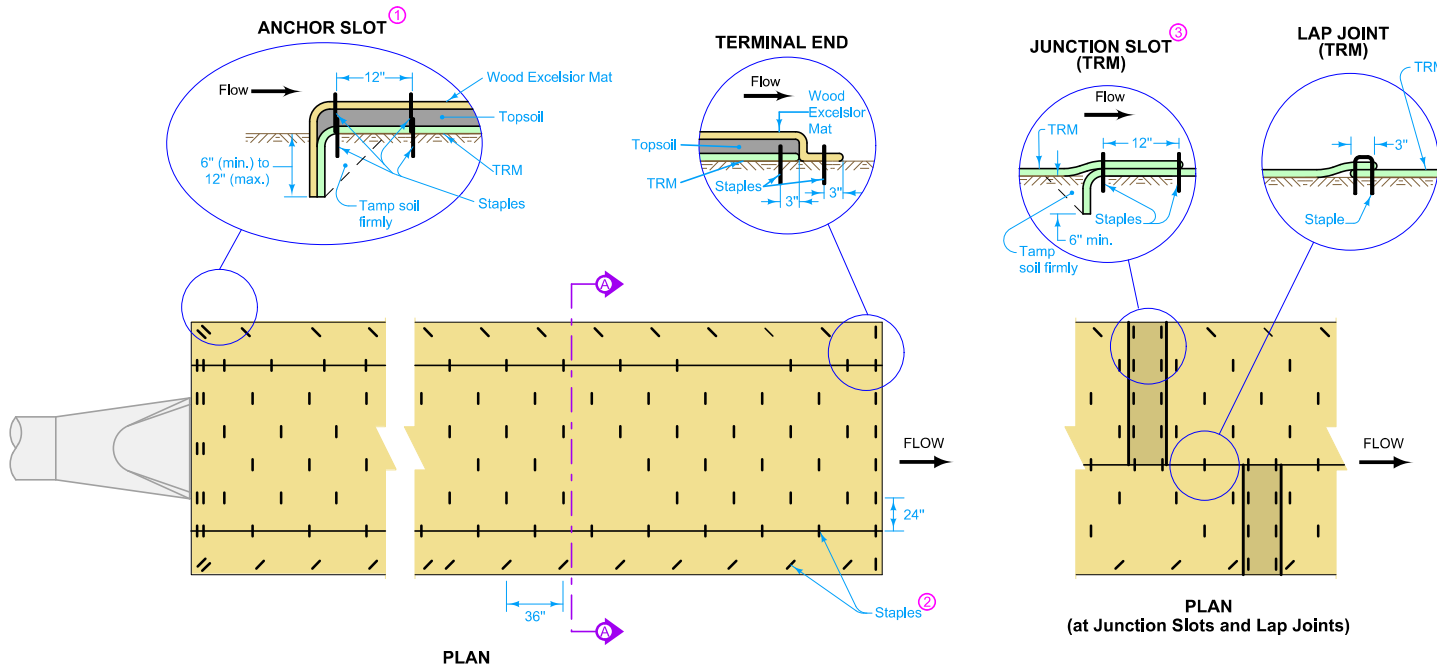
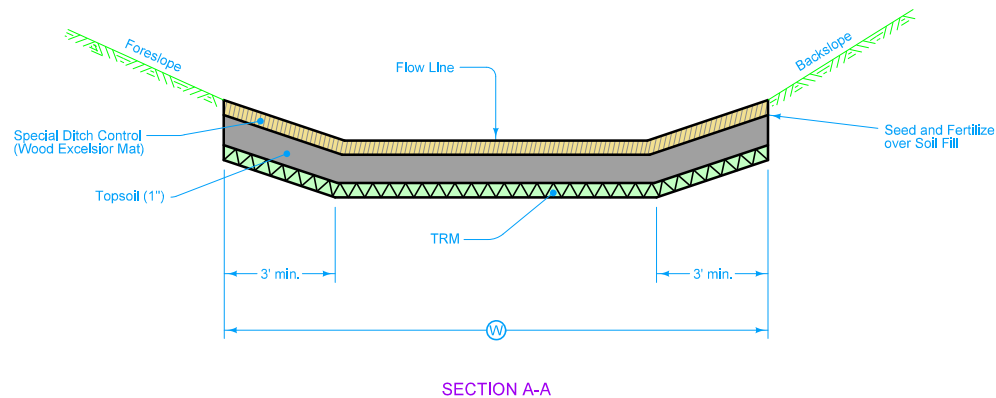


Refer to [EC-101](#) for Special Ditch Control (Wood Excelsior Mat).



- 1 Install anchor slot at the beginning (upstream end) of all mat installations.
- 2 Place staples alternately in rows approximately 24 inches apart. Approximately 30 staples required per square (100 sq. ft.) of each type of mat.
- 3 Stagger Junction Slots.



Possible Contract Items:  
Turf Reinforcement Mat

Possible Tabulation:  
100-22

	REVISION
	3   04-17-18
<b>STANDARD ROAD PLAN</b>	<b>EC-104</b>
SHEET 1 of 1	
REVISIONS: Added Designer Info button.	
 APPROVED BY DESIGN METHODS ENGINEER	
<b>TURF REINFORCEMENT MAT (TRM)</b>	