

Not intended for use in perennial or intermittent streams.

Fill and compact rills and gullies (see Detail 'B') prior to placing Perimeter and Slope Sediment Control Device. Ensure ground surface is smooth in order to provide continuous contact with Perimeter and Slope Sediment Control Device. Minor ground shaping may be required. Filling and compacting rills and gullies, and minor ground shaping, is incidental to Perimeter and Slope Sediment Control Device.

- ① Overlap joints per Detail 'A'. Turn the lower 10 feet of each run up the slope to help contain runoff. When placed such that runoff is conveyed along the device, additional run-ups and/or means may be required to reduce erosion along the device. Run-ups will be included in the installation length.
- ② Extra material required to install overlaps will not be included in the installation length.
- ③ Space stakes at 4 foot maximum spacing. Use minimum actual stake size $\frac{3}{4}$ " X $\frac{3}{4}$ " wood stakes.

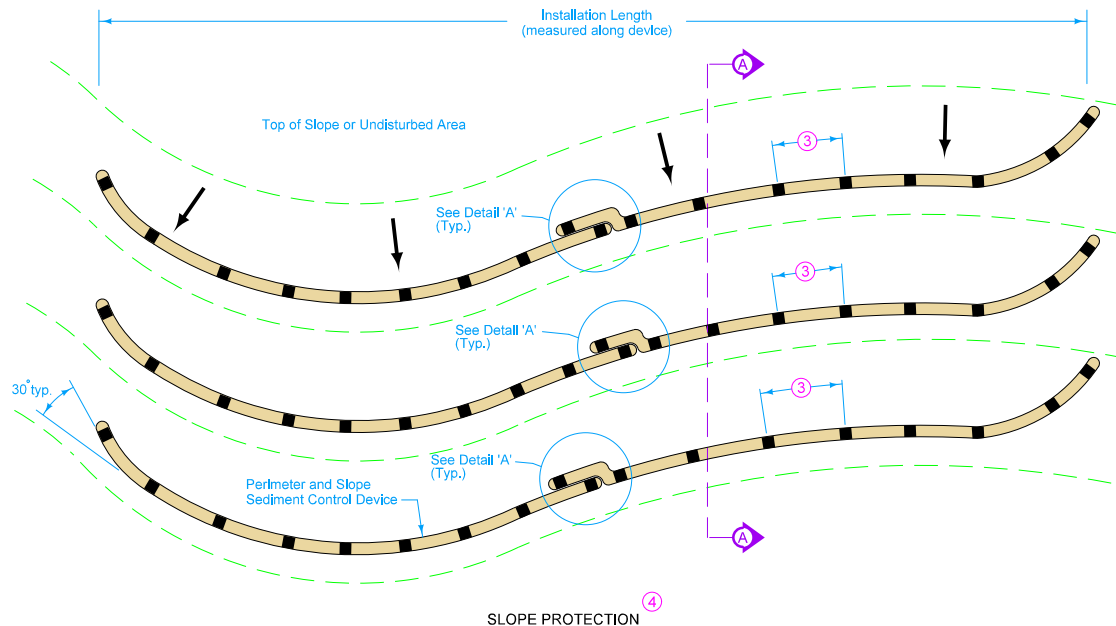
Possible Contract Item:
Perimeter and Slope Sediment Control Device

Possible Tabulation:
100-19

IOWA DOT	REVISION	
	4	04-21-20
STANDARD ROAD PLAN		EC-204
REVISIONS: Modified circle notes 3 and 5.		SHEET 1 of 3

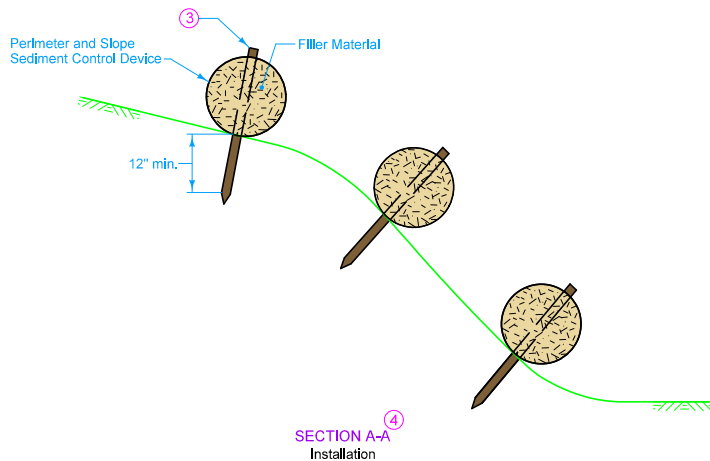
Handwritten Signature
APPROVED BY DESIGN METHODS ENGINEER

**PERIMETER AND SLOPE SEDIMENT
CONTROL DEVICES**



- ③ Space stakes at 4 foot maximum spacing. Use minimum actual stake size $\frac{3}{4}$ " X $\frac{3}{4}$ " wood stakes.
- ④ Install Slope Protection perpendicular to slope (parallel to contours). Overlap joints per Detail 'A'. Run the last 10 feet of each device up the slope to prevent flow runaround. Run-ups will be included in the installation length.

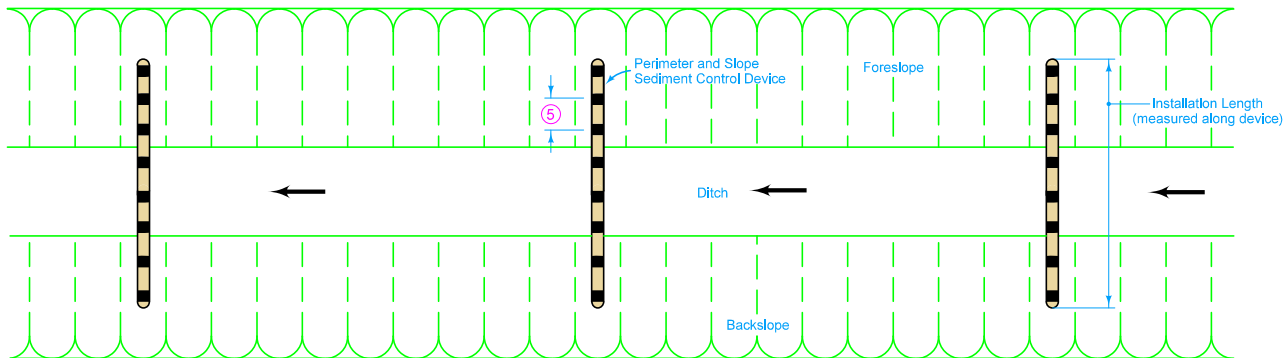
SLOPE PROTECTION ④



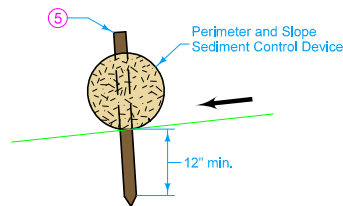
SECTION A-A
Installation

LEGEND	
	Contour Lines
	Flow
	Wood Stake ③

IOWA DOT	REVISION	
	4	04-21-20
STANDARD ROAD PLAN		EC-204
		SHEET 2 of 3
REVISIONS: Modified circle notes 3 and 5.		
<i>Scott Miller</i>		
APPROVED BY DESIGN METHODS ENGINEER		
PERIMETER AND SLOPE SEDIMENT CONTROL DEVICES		



DITCH PROTECTION ⁶



INSTALLATION IN DITCH

LEGEND	
	Contour Lines
	Flow
	Wood Stake ⁵

- ⁵ Space stakes at 2 foot maximum spacing. Use minimum actual stake size $\frac{3}{4}$ " X $\frac{3}{4}$ " wood stakes.
- ⁶ Install Ditch Protection perpendicular to ditch. Overlap joints per Detail 'A'.

	REVISION	
	4	04-21-20
STANDARD ROAD PLAN	EC-204	
REVISIONS: Modified circle notes 3 and 5.		
APPROVED BY DESIGN METHODS ENGINEER		
PERIMETER AND SLOPE SEDIMENT CONTROL DEVICES		