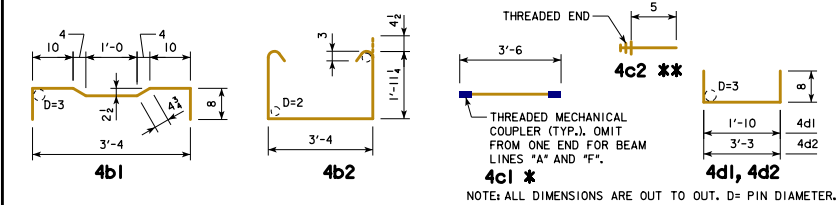


EPOXY COATED REINFORCING BAR LIST
27" x 48" x 60'-0" PPCBB, 0° SKEW

| BEAM LINE | | BEAM LINE "A" | | | BEAM LINES "B" AND "D" | | | BEAM LINES "C" AND "E" | | | BEAM LINE "F" | | |
|--------------|-------|---------------|------------|--------|------------------------|------------|--------|------------------------|------------|--------|---------------|------------|--------|
| BAR | SHAPE | NO. | LENGTH | WEIGHT | NO. | LENGTH | WEIGHT | NO. | LENGTH | WEIGHT | NO. | LENGTH | WEIGHT |
| 4a1 | | 8 | 31'-3" | 167 | 8 | 31'-3" | 167 | 8 | 31'-3" | 167 | 8 | 31'-3" | 167 |
| 4a2 | | 2 | 30'-8" | 41 | 2 | 30'-8" | 41 | 2 | 30'-8" | 41 | 2 | 30'-8" | 41 |
| 4b1 | | 90 | 4'-9 1/2" | 288 | 91 | 4'-9 1/2" | 291 | 90 | 4'-9 1/2" | 288 | 91 | 4'-9 1/2" | 291 |
| 4b2 | | 64 | 7'-11 1/2" | 340 | 64 | 7'-11 1/2" | 340 | 64 | 7'-11 1/2" | 340 | 64 | 7'-11 1/2" | 340 |
| 4c1 * | | 91 | 3'-6" | 213 | 92 | 3'-6" | 215 | 91 | 3'-6" | 213 | 92 | 3'-6" | 215 |
| 4c2 ** | | 25 | 0'-5" | 51 | 184 | 0'-5" | 51 | 182 | 0'-5" | 51 | 92 | 0'-5" | 26 |
| 4c3 * | | 2 | 3'-2" | 4 | - | - | - | 2 | 3'-2" | 4 | - | - | - |
| 4d1 | | 8 | 3'-2" | 17 | 8 | 3'-2" | 17 | 8 | 3'-2" | 17 | 8 | 3'-2" | 17 |
| 4d2 | | 12 | 4'-7" | 37 | 12 | 4'-7" | 37 | 12 | 4'-7" | 37 | 12 | 4'-7" | 37 |
| TOTAL (LBS.) | | 1132 | | | 1159 | | | 1158 | | | 1134 | | |

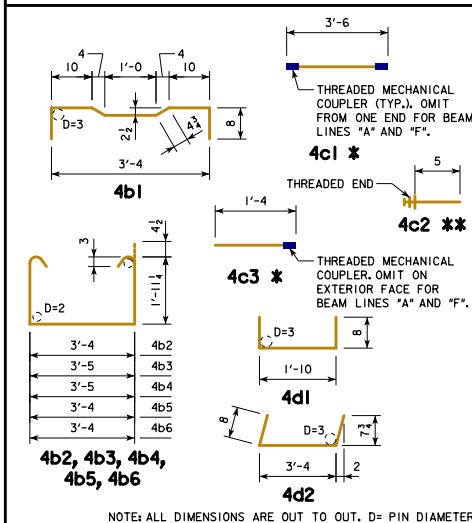
BENT BAR DETAILS



EPOXY COATED REINFORCING BAR LIST
27" x 48" x 60'-0" PPCBB, 15° SKEW

| BEAM LINE | | BEAM LINES "A" AND "F" | | | BEAM LINES "B", "C", "D", "E" | | |
|--------------|-------|------------------------|------------|--------|-------------------------------|------------|--------|
| BAR | SHAPE | NO. | LENGTH | WEIGHT | NO. | LENGTH | WEIGHT |
| 4a1 | | 8 | 31'-3" | 167 | 8 | 31'-3" | 167 |
| 4a2 | | 2 | 30'-8" | 41 | 2 | 30'-8" | 41 |
| 4b1 | | 89 | 4'-9 1/2" | 285 | 89 | 4'-9 1/2" | 285 |
| 4b2 | | 55 | 7'-11 1/2" | 292 | 55 | 7'-11 1/2" | 292 |
| 4b3 | | 4 | 8'-0 1/2" | 21 | 4 | 8'-0 1/2" | 21 |
| 4b4 | | 2 | 8'-0 1/2" | 11 | 2 | 8'-0 1/2" | 11 |
| 4b5 | | 2 | 7'-11 1/2" | 11 | 2 | 7'-11 1/2" | 11 |
| 4b6 | | 2 | 7'-11 1/2" | 11 | 2 | 7'-11 1/2" | 11 |
| 4c1 * | | 90 | 3'-6" | 210 | 90 | 3'-6" | 210 |
| 4c2 ** | | 25 | 0'-5" | 51 | 182 | 0'-5" | 51 |
| 4c3 * | | 2 | 1'-4" | 2 | 2 | 1'-4" | 2 |
| 4c4 | | 4 | 3'-4" | 9 | 4 | 3'-4" | 9 |
| 4d1 | | 8 | 3'-2" | 17 | 8 | 3'-2" | 17 |
| 4d2 | | 12 | 4'-8" | 37 | 12 | 4'-8" | 37 |
| TOTAL (LBS.) | | 1139 | | | 1165 | | |

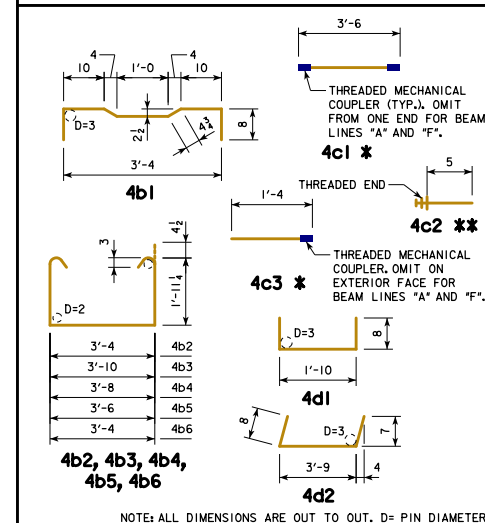
BENT BAR DETAILS



EPOXY COATED REINFORCING BAR LIST
27" x 48" x 60'-0" PPCBB, 30° SKEW

| BEAM LINE | | BEAM LINES "A" AND "F" | | | BEAM LINES "B", "C", "D", "E" | | |
|--------------|-------|------------------------|------------|--------|-------------------------------|------------|--------|
| BAR | SHAPE | NO. | LENGTH | WEIGHT | NO. | LENGTH | WEIGHT |
| 4a1 | | 8 | 31'-3" | 167 | 8 | 31'-3" | 167 |
| 4a2 | | 2 | 30'-8" | 41 | 2 | 30'-8" | 41 |
| 4b1 | | 86 | 4'-9 1/2" | 275 | 86 | 4'-9 1/2" | 275 |
| 4b2 | | 55 | 7'-11 1/2" | 292 | 55 | 7'-11 1/2" | 292 |
| 4b3 | | 4 | 8'-5 1/2" | 23 | 4 | 8'-5 1/2" | 23 |
| 4b4 | | 2 | 8'-3 1/2" | 11 | 2 | 8'-3 1/2" | 11 |
| 4b5 | | 2 | 8'-1 1/2" | 11 | 2 | 8'-1 1/2" | 11 |
| 4b6 | | 2 | 7'-11 1/2" | 11 | 2 | 7'-11 1/2" | 11 |
| 4c1 * | | 87 | 3'-6" | 203 | 87 | 3'-6" | 203 |
| 4c2 ** | | 90 | 0'-5" | 25 | 180 | 0'-5" | 50 |
| 4c3 * | | 6 | 1'-4" | 5 | 6 | 1'-4" | 5 |
| 4c4 | | 4 | 3'-8" | 10 | 4 | 3'-8" | 10 |
| 4d1 | | 8 | 3'-2" | 17 | 8 | 3'-2" | 17 |
| 4d2 | | 12 | 5'-1" | 41 | 12 | 5'-1" | 41 |
| TOTAL (LBS.) | | 1132 | | | 1157 | | |

BENT BAR DETAILS



NOTES:
 * INCLUDES MECHANICAL COUPLER(S). SEE BENT BAR DETAILS.
 ** SEE BENT BAR DETAILS. THE LENGTHS SHOWN DO NOT INCLUDE AN ALLOWANCE FOR THE THREADED END. BAR LENGTHS MAY NEED TO INCREASE DEPENDING ON THE MECHANICAL COUPLER ASSEMBLY USED. THE COST OF THE THREADED PORTION OF THESE BARS IS TO BE INCLUDED IN THE PRICE BID FOR THE BEAMS. THE WEIGHT OF THE THREADED END IS NOT INCLUDED IN THE QUANTITY SHOWN.

LATEST REVISION DATE

Thomas E. McQuill
 APPROVED BY BRIDGE ENGINEER

IOWADOT Highway Division

STANDARD DESIGN - 24'-0" ROADWAY, SINGLE SPAN
CONCRETE BOX BEAM BRIDGES

DECEMBER, 2016

27" x 48" x 60'-0" PPCBB DETAILS
REINFORCING BAR LIST

B24-47-16