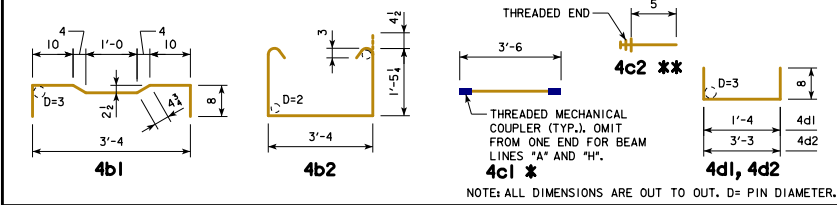


EPOXY COATED REINFORCING BAR LIST
21" x 48" x 30'-0 PPCBB, 0° SKEW

BEAM LINE		BEAM LINE "A"			BEAM LINES "B", "D" AND "F"			BEAM LINES "C", "E" AND "G"			BEAM LINE "H"		
BAR	SHAPE	NO.	LENGTH	WEIGHT	NO.	LENGTH	WEIGHT	NO.	LENGTH	WEIGHT	NO.	LENGTH	WEIGHT
4a1		4	30'-10	82	4	30'-10	82	4	30'-10	82	4	30'-10	82
4a2		1	29'-8	20	1	29'-8	20	1	29'-8	20	1	29'-8	20
4b1		45	4'-9 1/2	144	46	4'-9 1/2	147	45	4'-9 1/2	144	46	4'-9 1/2	147
4b2		34	6'-11 1/2	158	34	6'-11 1/2	158	34	6'-11 1/2	158	34	6'-11 1/2	158
4c1 *		46	3'-6	108	47	3'-6	110	46	3'-6	108	47	3'-6	110
4c2 **		46	0'-5	13	94	0'-5	26	92	0'-5	26	47	0'-5	13
4c3 *		2	3'-2	4	-	-	-	2	3'-2	4	-	-	-
4d1		8	2'-8	14	8	2'-8	14	8	2'-8	14	8	2'-8	14
4d2		12	4'-7	37	12	4'-7	37	12	4'-7	37	12	4'-7	37
TOTAL (LBS.)		580			594			593			581		

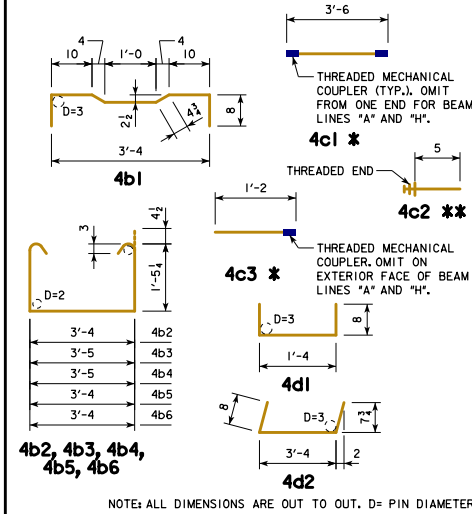
BENT BAR DETAILS



EPOXY COATED REINFORCING BAR LIST
21" x 48" x 30'-0 PPCBB, 15° SKEW

BEAM LINE		BEAM LINES "A" AND "H"			BEAM LINES "B" THRU "G"		
BAR	SHAPE	NO.	LENGTH	WEIGHT	NO.	LENGTH	WEIGHT
4a1		4	30'-10	82	4	30'-10	82
4a2		1	29'-8	20	1	29'-8	20
4b1		44	4'-9 1/2	141	44	4'-9 1/2	141
4b2		25	6'-11 1/2	116	25	6'-11 1/2	116
4b3		4	7'-0 1/2	19	4	7'-0 1/2	19
4b4		2	7'-0 1/2	9	2	7'-0 1/2	9
4b5		2	6'-11 1/2	9	2	6'-11 1/2	9
4b6		2	6'-11 1/2	9	2	6'-11 1/2	9
4c1 *		45	3'-6	105	45	3'-6	105
4c2 **		46	0'-5	13	92	0'-5	26
4c3 *		2	1'-2	2	2	1'-2	2
4c4		4	3'-4	9	4	3'-4	9
4d1		8	2'-8	14	8	2'-8	14
4d2		12	4'-8	37	12	4'-8	37
TOTAL (LBS.)		585			598		

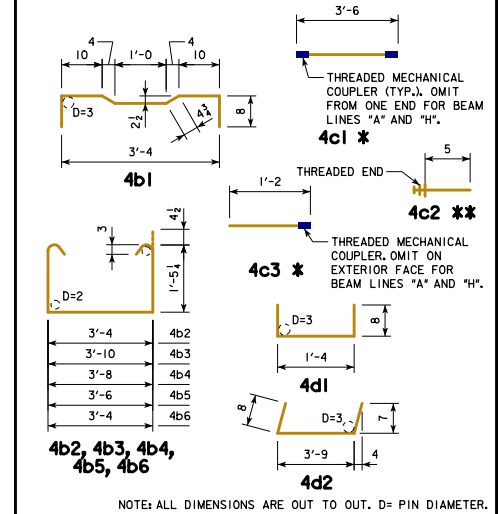
BENT BAR DETAILS



EPOXY COATED REINFORCING BAR LIST
21" x 48" x 30'-0 PPCBB, 30° SKEW

BEAM LINE		BEAM LINES "A" AND "H"			BEAM LINES "B" THRU "G"		
BAR	SHAPE	NO.	LENGTH	WEIGHT	NO.	LENGTH	WEIGHT
4a1		4	30'-10	82	4	30'-10	82
4a2		1	29'-8	20	1	29'-8	20
4b1		41	4'-9 1/2	131	41	4'-9 1/2	131
4b2		25	6'-11 1/2	116	25	6'-11 1/2	116
4b3		4	7'-5 1/2	20	4	7'-5 1/2	20
4b4		2	7'-3 1/2	10	2	7'-3 1/2	10
4b5		2	7'-1 1/2	10	2	7'-1 1/2	10
4b6		2	6'-11 1/2	9	2	6'-11 1/2	9
4c1 *		42	3'-6	98	42	3'-6	98
4c2 **		45	0'-5	13	90	0'-5	25
4c3 *		6	1'-2	5	6	1'-2	5
4c4		4	3'-8	10	4	3'-8	10
4d1		8	2'-8	14	8	2'-8	14
4d2		12	5'-1	41	12	5'-1	41
TOTAL (LBS.)		579			591		

BENT BAR DETAILS



NOTES:
 * INCLUDES MECHANICAL COUPLER(S). SEE BENT BAR DETAILS.
 ** SEE BENT BAR DETAILS. THE LENGTHS SHOWN DO NOT INCLUDE AN ALLOWANCE FOR THE THREADED END. BAR LENGTHS MAY NEED TO INCREASE DEPENDING ON THE MECHANICAL COUPLER ASSEMBLY USED. THE COST OF THE THREADED PORTION OF THESE BARS IS TO BE INCLUDED IN THE PRICE BID FOR THE BEAMS. THE WEIGHT OF THE THREADED END IS NOT INCLUDED IN THE QUANTITY SHOWN.

LATEST REVISION DATE

Thomas E. M. D...all
 APPROVED BY BRIDGE ENGINEER

IOWADOT Highway Division

STANDARD DESIGN - 30'-0 ROADWAY, SINGLE SPAN
CONCRETE BOX BEAM BRIDGES

DECEMBER, 2016

21" x 48" x 30'-0 PPCBB DETAILS
REINFORCING BAR LIST

B30-37-16