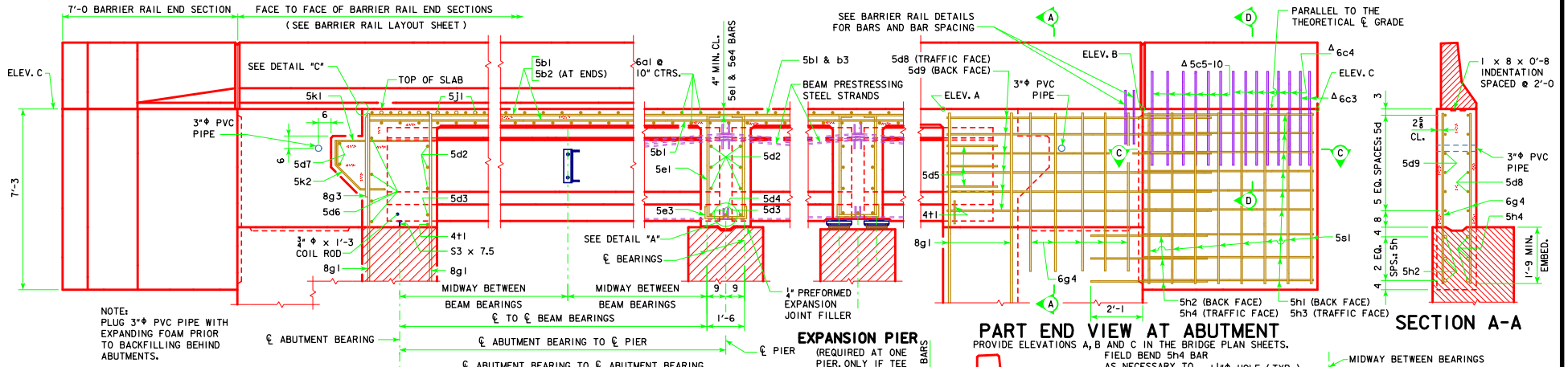
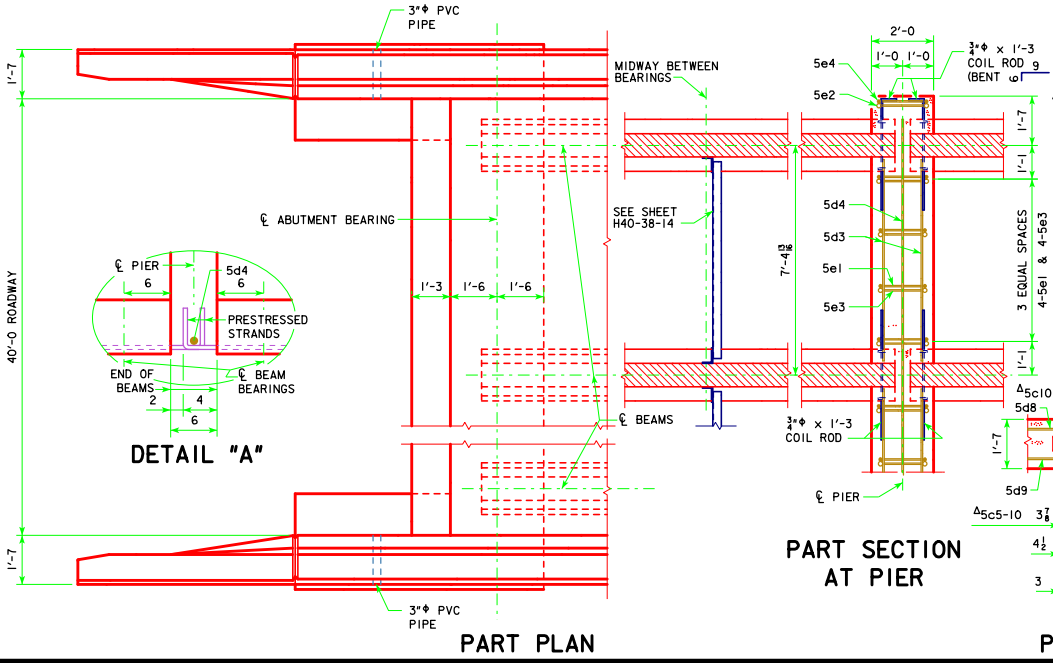


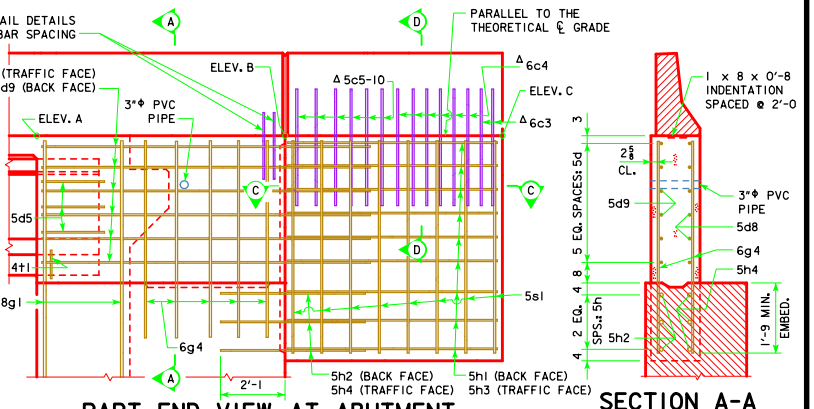
NOTE: BRIDGE IS SYMMETRICAL ABOUT  $\bar{\bar{C}}$



**ABUTMENT PART LONGITUDINAL SECTION NEAR GUTTER**  
(FOR DETAILS OF INTERMEDIATE DIAPHRAGM SEE SHEET H40-38-14)

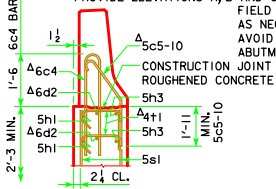


**PART PLAN**



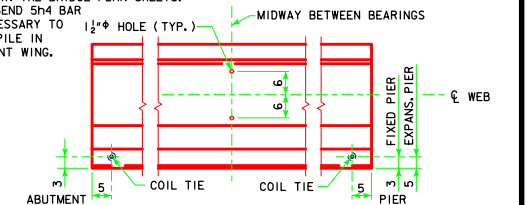
**PART END VIEW AT ABUTMENT**

PROVIDE ELEVATIONS A, B AND C IN THE BRIDGE PLAN SHEETS. FIELD BEND 5H4 BAR AS NECESSARY TO AVOID PILE IN ABUTMENT WING.

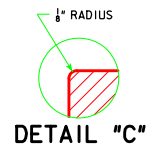


**SECTION D-D**

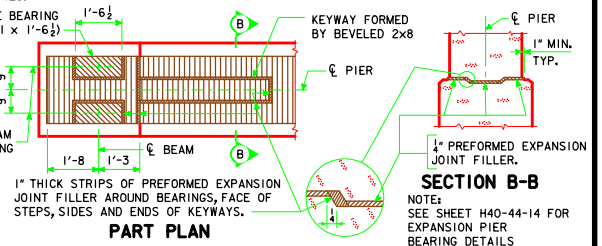
NOTE: SEE END SECTION DETAILS IN THESE PLANS FOR DETAILS OF BARRIER RAIL END SECTION. REINFORCING BARS 6c3, 6c4, 5c5-10, 6d2 & 4t1 ARE INCLUDED IN THE BARRIER RAIL QUANTITIES.



**LOCATION OF BEAM COIL TIES AND STEEL DIAPHRAGM BOLT HOLES**



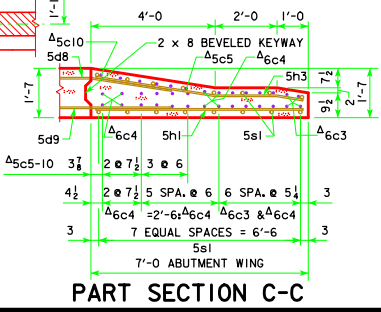
**DETAIL "C"**



**SECTION B-B**

NOTE: SEE SHEET H40-44-14 FOR EXPANSION PIER BEARING DETAILS

**PART SECTION AT PIER**



**PART SECTION C-C**

**TOP OF FIXED PIER DETAILS**

LATEST REVISION DATE  Approved by Bridge Engineer [Signature]	
	STANDARD DESIGN - 40' ROADWAY, THREE SPAN BRIDGE <b>PRETENSIONED PRESTRESSED CONCRETE BEAM BRIDGES</b> SEPTEMBER, 2014
	<div style="text-align: center;"> <b>LONGITUDINAL SECTION</b> 0° SKEW C BEAMS         </div> <div style="text-align: center;"> <b>H40-08-14</b> </div>