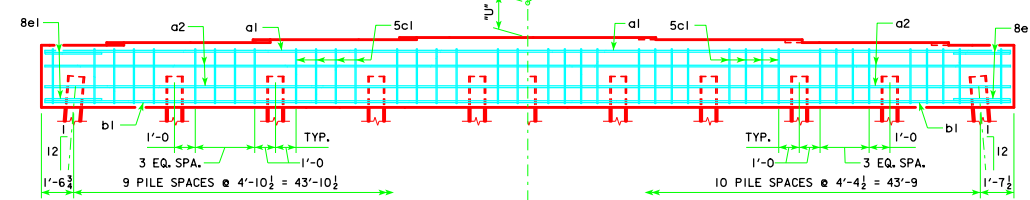


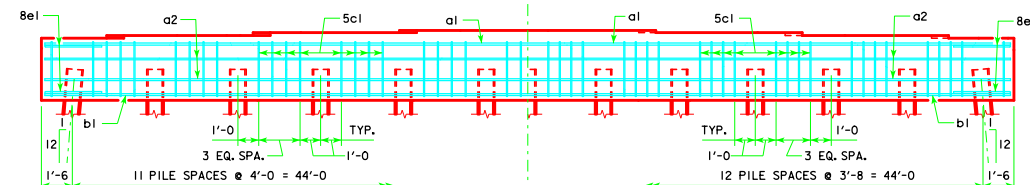
TYPICAL PLAN

SYMMETRICAL ABOUT CL PIER EXCEPT STEPS
GRADE ELEV. @ CL PIER



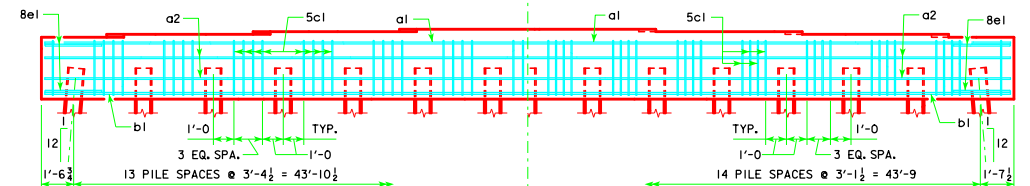
10 PILE BENT

11 PILE BENT



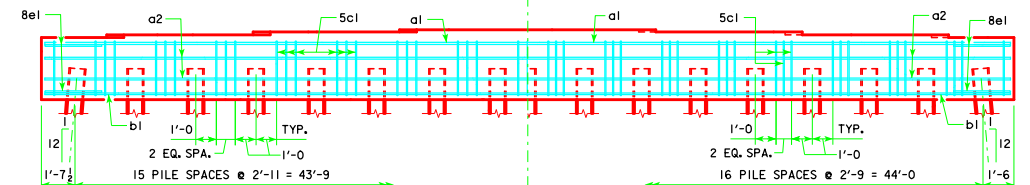
12 PILE BENT

13 PILE BENT



14 PILE BENT

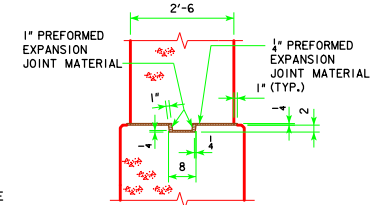
15 PILE BENT



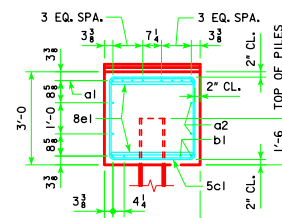
16 PILE BENT

17 PILE BENT

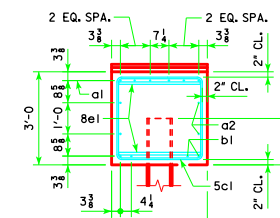
NOTE:
THE HEIGHT OF THE STEPS ON THE BRIDGE SEAT IS EQUAL TO THE DIFFERENCE IN ELEVATIONS OF THE TOP OF SLAB AT ADJACENT BEAMS ALONG CL PIER. SEE SHEET H44-15-14 FOR "U" DIMENSION.



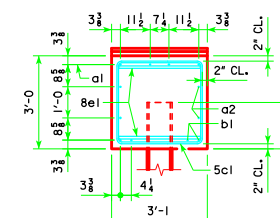
KEYED NOTCH DETAIL



VIEW A-A
FOR 10 PILE BENT



VIEW A-A
FOR 11, 12, 13, 14, 15 & 16 PILE BENTS



VIEW A-A
FOR 17 PILE BENT

| | |
|--|--|
| LATEST REVISION DATE APPROVED BY BRIDGE ENGINEER <i>Thomas E. M. Donnell</i> | |
| | STANDARD DESIGN - 44' ROADWAY, THREE SPAN BRIDGE PRETENSIONED PRESTRESSED CONCRETE BEAM BRIDGES SEPTEMBER, 2014 |
| | PILE BENT PIERS H44-42-14 15° SKEW |