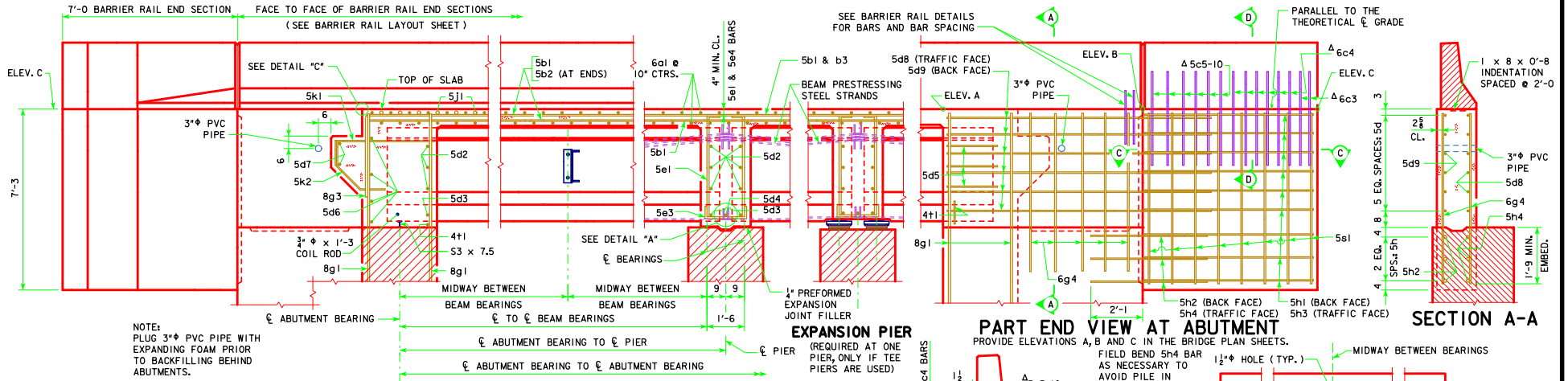


NOTE: BRIDGE IS SYMMETRICAL ABOUT $\bar{\bar{\ell}}$



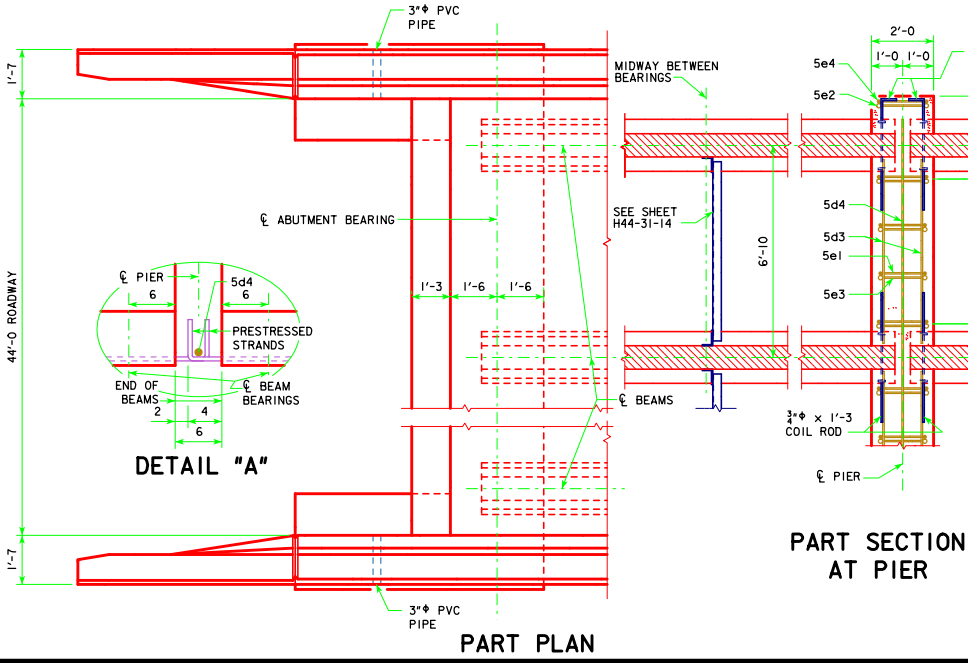
NOTE: PLUS 3" PVC PIPE WITH EXPANDING FOAM PRIOR TO BACKFILLING BEHIND ABUTMENTS.

ABUTMENT PART LONGITUDINAL SECTION NEAR GUTTER
(FOR DETAILS OF INTERMEDIATE DIAPHRAGM SEE SHEET H44-31-14)

EXPANSION PIER
(REQUIRED AT ONE PIER, ONLY IF TEE PIERS ARE USED)

PART END VIEW AT ABUTMENT
PROVIDE ELEVATIONS A, B AND C IN THE BRIDGE PLAN SHEETS.

SECTION A-A

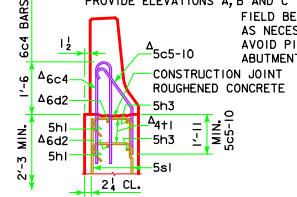


DETAIL "A"

DETAIL "C"

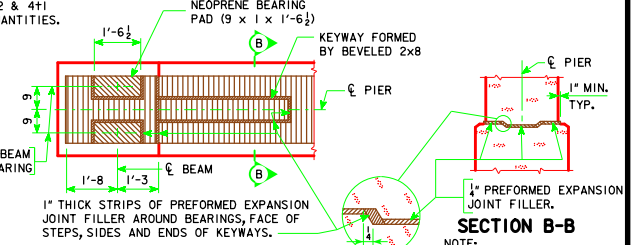
PART SECTION AT PIER

PART SECTION C-C



SECTION D-D
NOTE: SEE END SECTION DETAILS IN THESE PLANS FOR DETAILS OF BARRIER RAIL END SECTION. REINFORCING BARS 6c3, 6c4, 5c5-10, 6d2 & 4t1 ARE INCLUDED IN THE BARRIER RAIL QUANTITIES.

LOCATION OF BEAM COIL TIES AND STEEL DIAPHRAGM BOLT HOLES



SECTION B-B
NOTE: SEE SHEET H44-37-14 FOR EXPANSION PIER BEARING DETAILS

PART PLAN TOP OF FIXED PIER DETAILS

LATEST REVISION DATE <i>Thomas E. M. Dwyer</i> APPROVED BY BRIDGE ENGINEER	IOWADOT Highway Division	
	STANDARD DESIGN - 44' ROADWAY, THREE SPAN BRIDGE PRETENSIONED PRESTRESSED CONCRETE BEAM BRIDGES SEPTEMBER, 2014	
	LONGITUDINAL SECTION 0° SKEW C BEAMS	H44-08-14