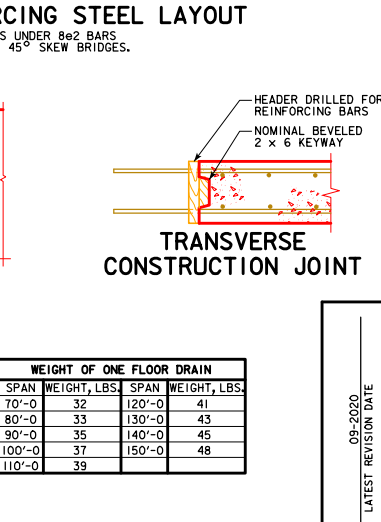
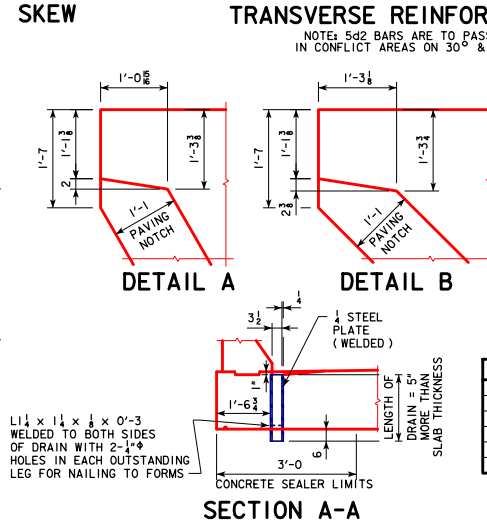
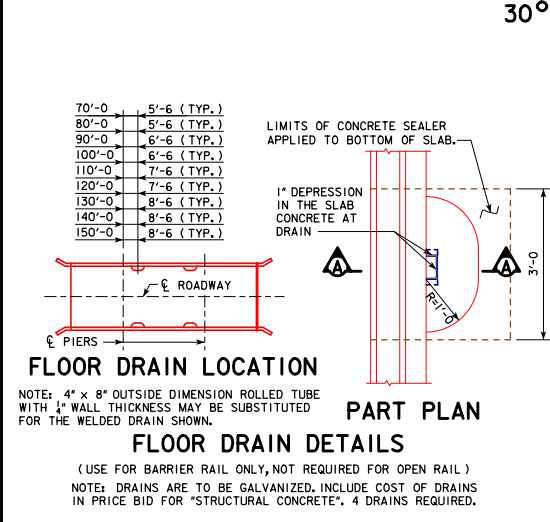
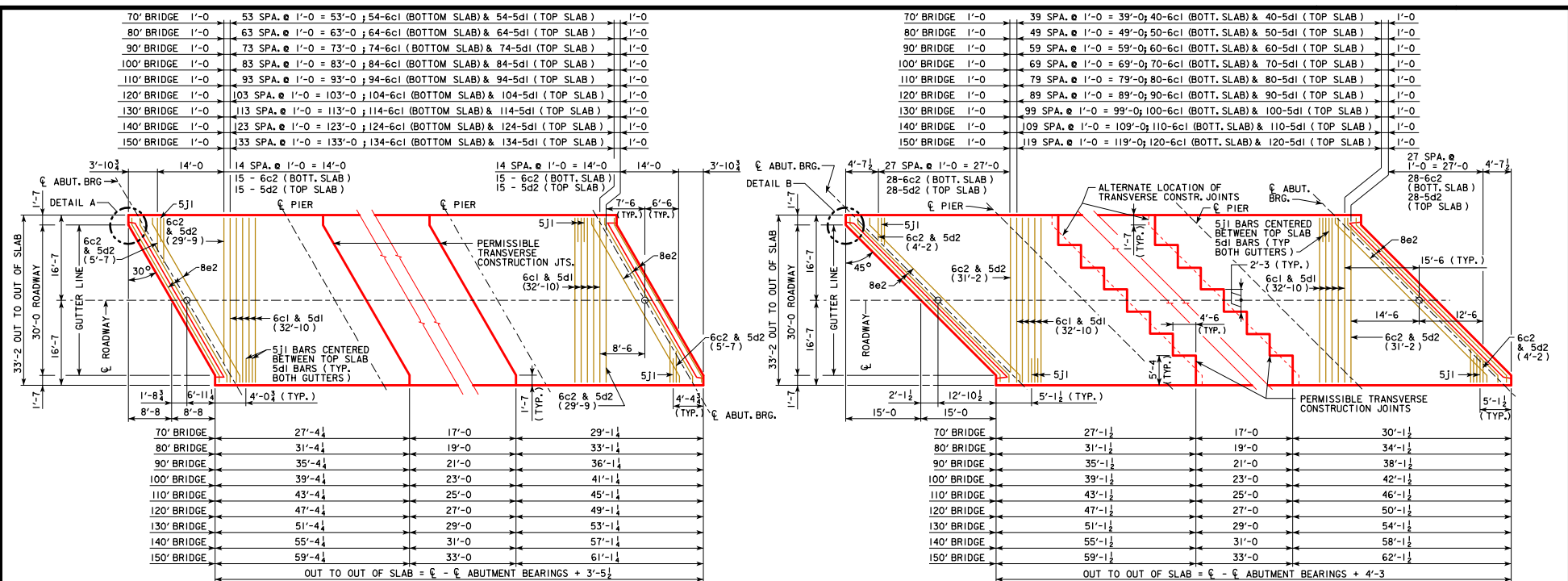
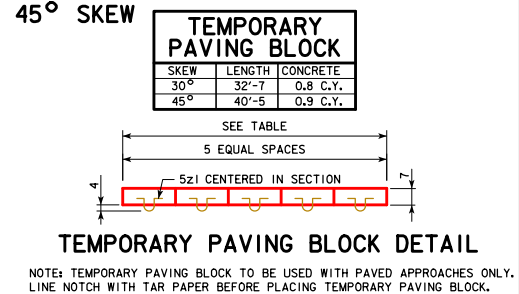


REVISED 07-2009; CHANGED THE DRAIN ANGLES DETAILS ON SECTION A-A.
REVISED 09-2020; UPDATED BRIDGE ENGINEER SIGNATURE. CHANGED PAVING BLOCK LIFTING HOOP BAR MARK (WAS 5X1).



WEIGHT OF ONE FLOOR DRAIN			
SPAN	WEIGHT, LBS.	SPAN	WEIGHT, LBS.
70'-0"	32	120'-0"	41
80'-0"	33	130'-0"	43
90'-0"	35	140'-0"	45
100'-0"	37	150'-0"	48
110'-0"	39		



TEMPORARY PAVING BLOCK		
SKEW	LENGTH	CONCRETE
30°	32'-7"	0.8 C.Y.
45°	40'-5"	0.9 C.Y.

09-2020
LATEST REVISION DATE

APPROVED BY BRIDGE ENGINEER

IOWADOT Highway Division

STANDARD DESIGN - 30' ROADWAY, 3 SPAN BRIDGES

CONTINUOUS CONCRETE SLAB BRIDGES

NOVEMBER, 2006

SUPERSTRUCTURE DETAILS ALL BRIDGES

J30-22-06

30° & 45° SKEW