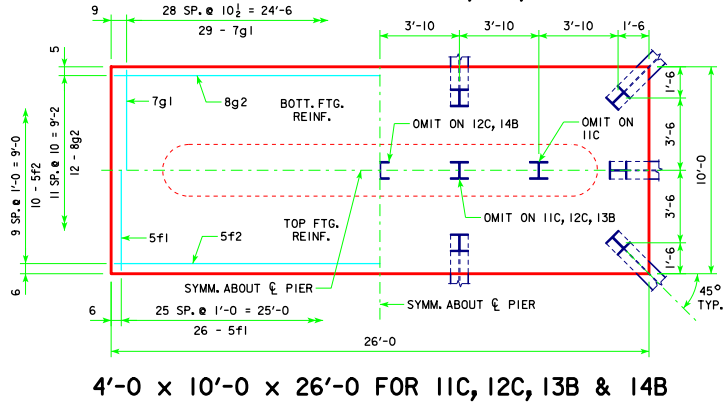
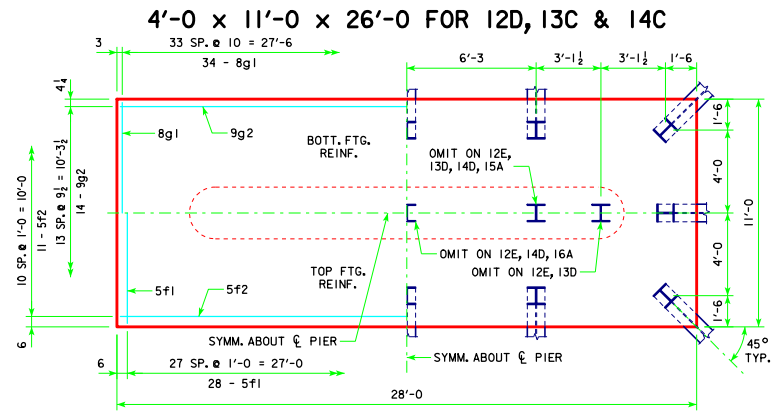
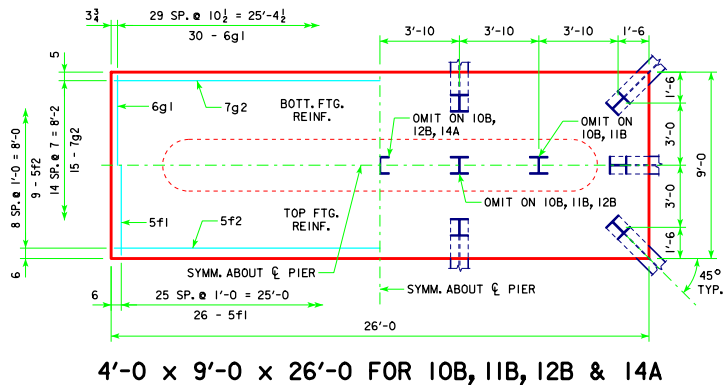
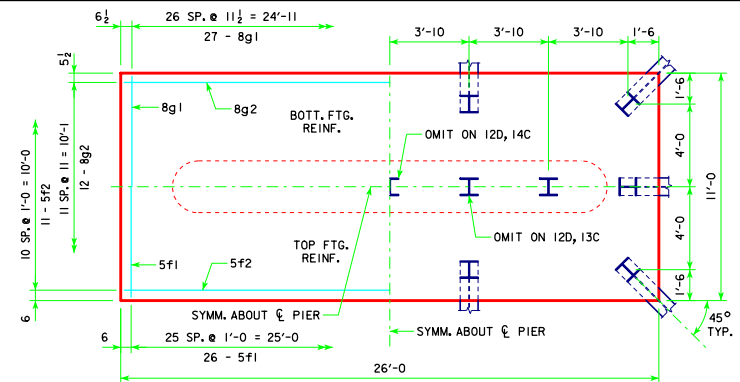
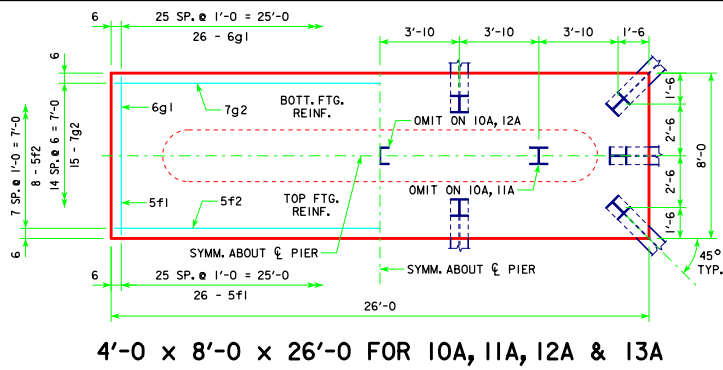
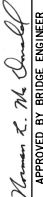



REVISED 05-13 - REVISION FOR LRFD PILE DESIGN.



NOTE:
SEE SHEET RS40-141-10 FOR FOOTING NOTES.

| | |
|---|--|
| LATEST REVISION DATE 05-13 APPROVED BY BRIDGE ENGINEER  |  <p>Iowa Department of Transportation Highway Division</p> |
| | STANDARD DESIGN - 40' ROADWAY, 3 SPAN BRIDGES ROLLED STEEL BEAM BRIDGES JUNE, 2010 |
| TEE PIER-HPI0x57 SRL-2 STEEL PILE FOOTINGS 20° SKEW - SHEET 2 | RS40-142-10 |