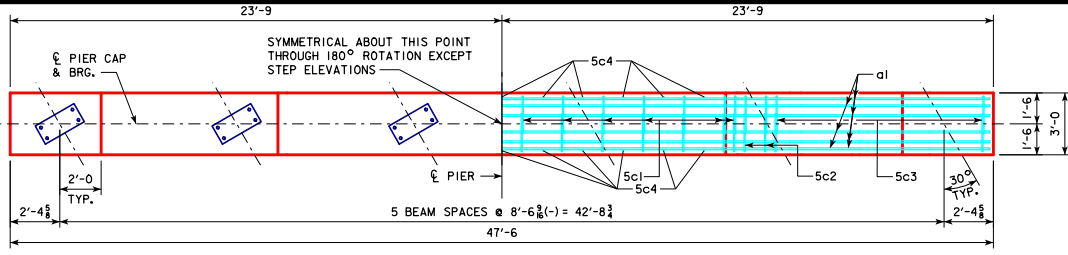


REVISED 10-2016 - CHANGED BEVELED KEYWAY ON PIER COLUMN CAP AND FOOTING TO 3"x10"x18"-0. (WAS 2"x8"x20"-0). KEYWAY LENGTH CHANGED TO BE 5'-0" LESS THAN WIDTH OF PIER COLUMN.



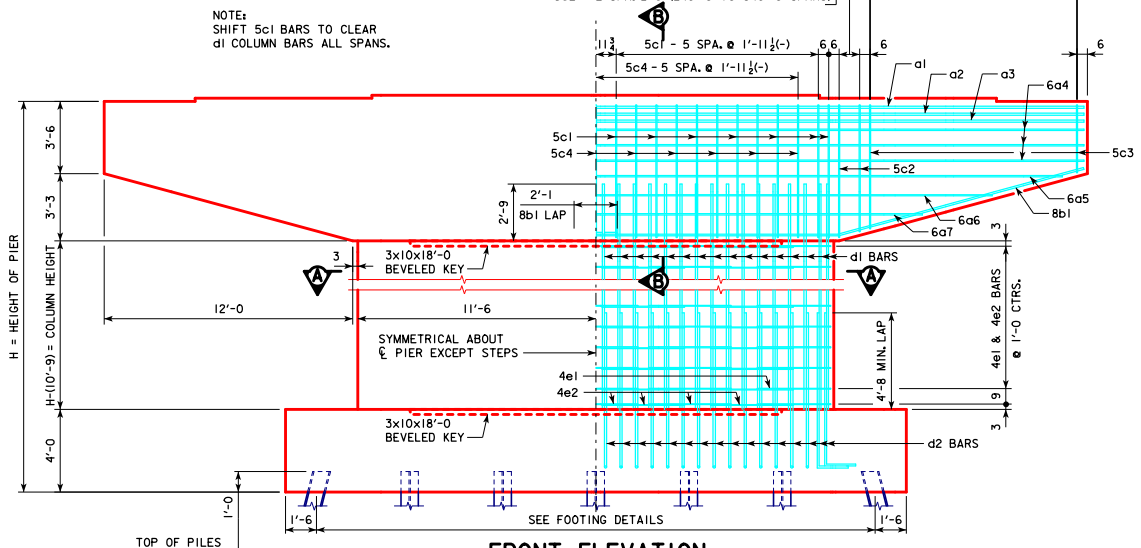
NOTE:
ANCHOR BOLTS REQUIRED FOR FIXED
PIER BEARINGS ONLY. FOR BOLT AND
BEARING SIZES, SEE RS40-093-10,
RS40-094-10 OR RS40-095-10.

CAP PLAN

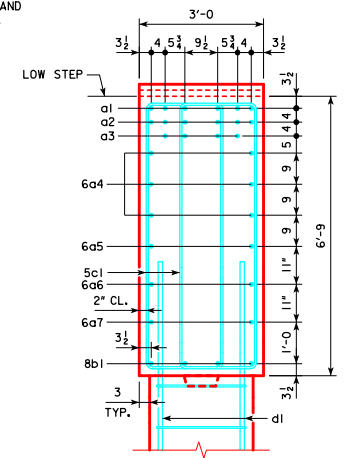
160'-0" TO 240'-0" SPANS 5c3 - 10 SPA. @ 1'-0" = 10'-0"
 260'-0" TO 280'-0" SPANS 5c3 - 13 SPA. @ 9 1/4"(-) = 10'-0"
 300'-0" TO 340'-0" SPANS 5c3 - 17 SPA. @ 7(+)= 10'-0"

5c2 - 1 SPA. @ 1'-0" (160'-0" TO 220'-0" SPANS)
 5c2 - 2 SPA. @ 6" (240'-0" TO 340'-0" SPANS)

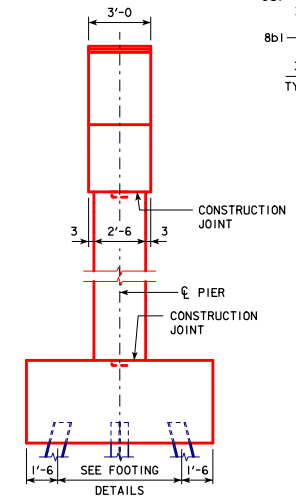
NOTE:
SHIFT 5c1 BARS TO CLEAR
d1 COLUMN BARS ALL SPANS.



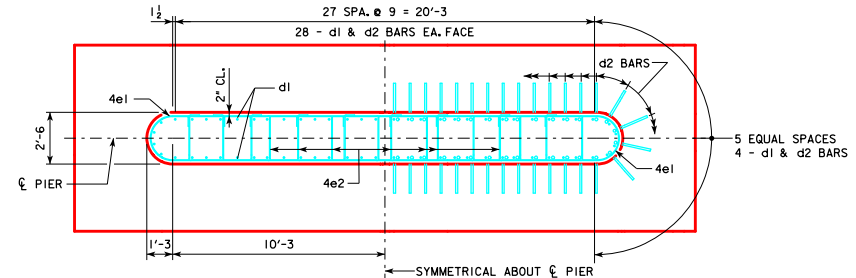
FRONT ELEVATION



SECTION B-B



END ELEVATION



SECTION A-A

10-2016 LATEST REVISION DATE <i>Thomas E. Mc Donnell</i> APPROVED BY BRIDGE ENGINEER	
	STANDARD DESIGN - 40' ROADWAY, 3 SPAN BRIDGES ROLLED STEEL BEAM BRIDGES JUNE, 2010
	TEE PIER CAP & COLUMN DETAILS 30° SKEW
RS40-146-10	