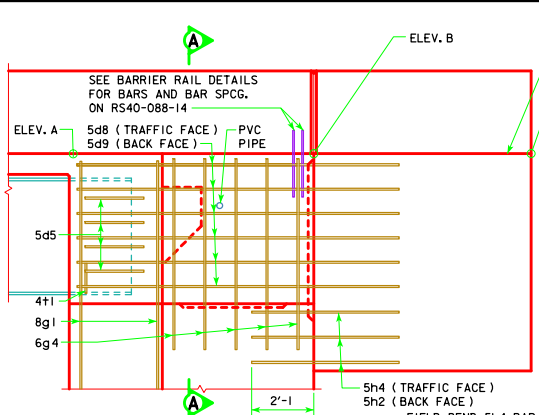


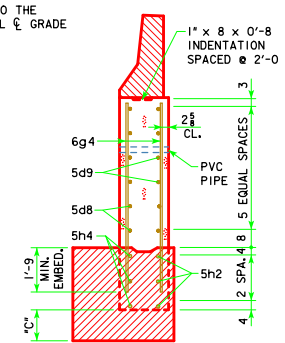
PART LONGITUDINAL SECTION NEAR GUTTER

NOTE:
 PLUG 3" PVC PIPE WITH
 EXPANDING FOAM PRIOR
 TO BACKFILLING BEHIND
 ABUTMENTS.



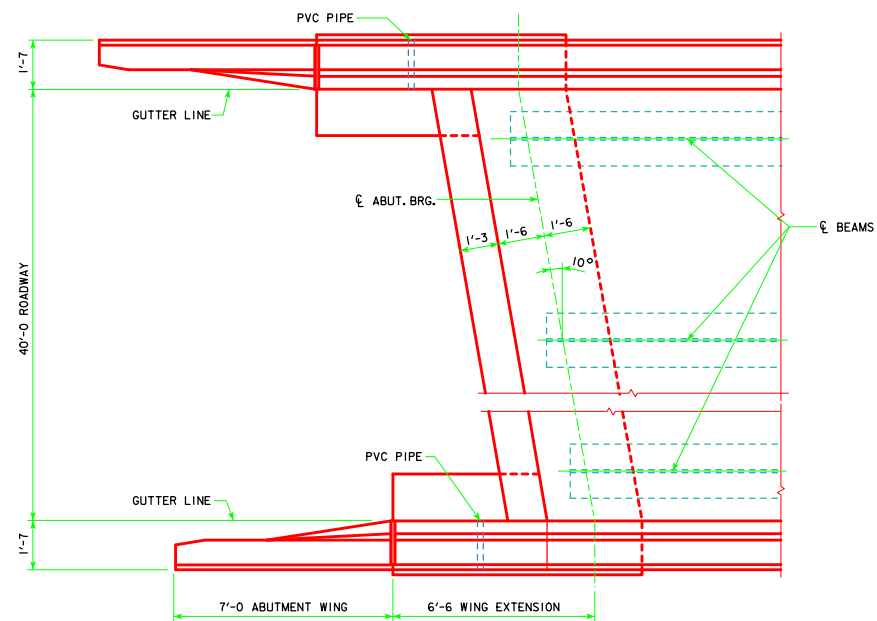
PART END VIEW AT ABUTMENT

FIELD BEND 5h4 BAR
 AS NECESSARY TO
 AVOID PILE IN
 ABUTMENT WING.

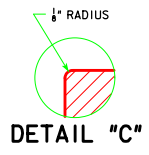


SECTION A-A

NOTE:
 FOR ELEVATION A, ELEVATION B, ELEVATION C AND
 DIMENSION C SEE "MISCELLANEOUS DETAILS"
 FOR THE APPROPRIATE LENGTH BRIDGE.



PART PLAN
 (STEEL DIAPHRAGMS NOT SHOWN)



LATEST REVISION DATE <i>Norman E. Mc Donald</i> APPROVED BY BRIDGE ENGINEER		
	STANDARD DESIGN - 40' ROADWAY, 3 SPAN BRIDGES ROLLED STEEL BEAM BRIDGES OCTOBER, 2014	
	LONGITUDINAL SECTION 10° SKEW	RS40-022-14