

PART LONGITUDINAL SECTION NEAR GUTTER

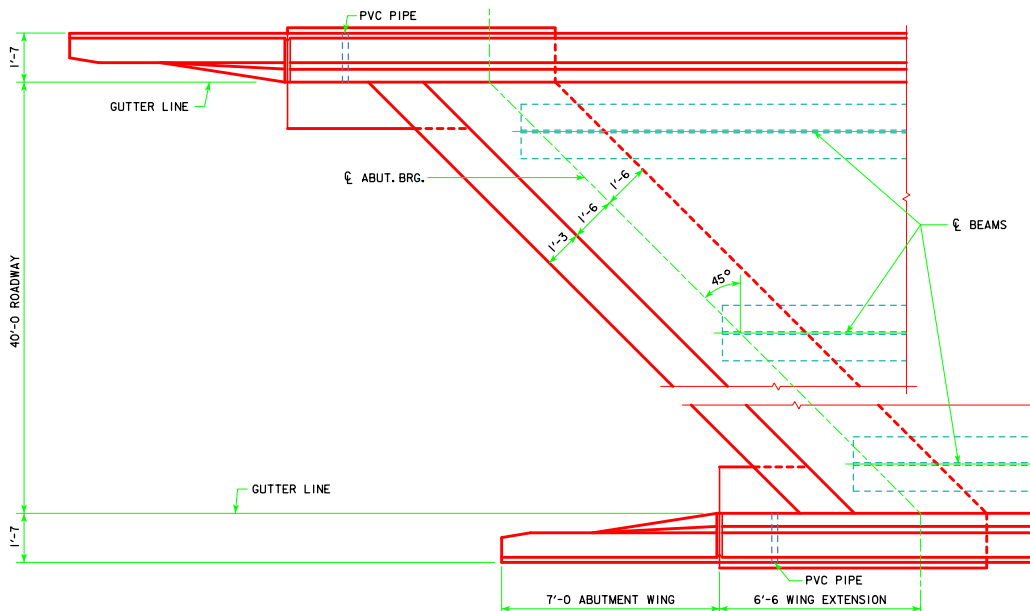
NOTE:
PLUG 3" PVC PIPE WITH EXPANDING FOAM PRIOR TO BACKFILLING BEHIND ABUTMENTS.

NOTE:
FOR ELEVATION A, ELEVATION B, ELEVATION C AND DIMENSION C SEE "MISCELLANEOUS DETAILS" FOR THE APPROPRIATE LENGTH BRIDGE.

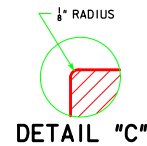
PART END VIEW AT ABUTMENT

FIELD BEND 5h4 BAR AS NECESSARY TO AVOID PILE IN ABUTMENT WING.

SECTION A-A



PART PLAN
(STEEL DIAPHRAGMS NOT SHOWN)



| | | | |
|----------------------|---------------------------------|--|--------------------|
| LATEST REVISION DATE | APPROVED BY BRIDGE ENGINEER | | |
| | | STANDARD DESIGN - 40' ROADWAY, 3 SPAN BRIDGES ROLLED STEEL BEAM BRIDGES OCTOBER, 2014 | |
| | | LONGITUDINAL SECTION 45° SKEW | RS40-028-14 |