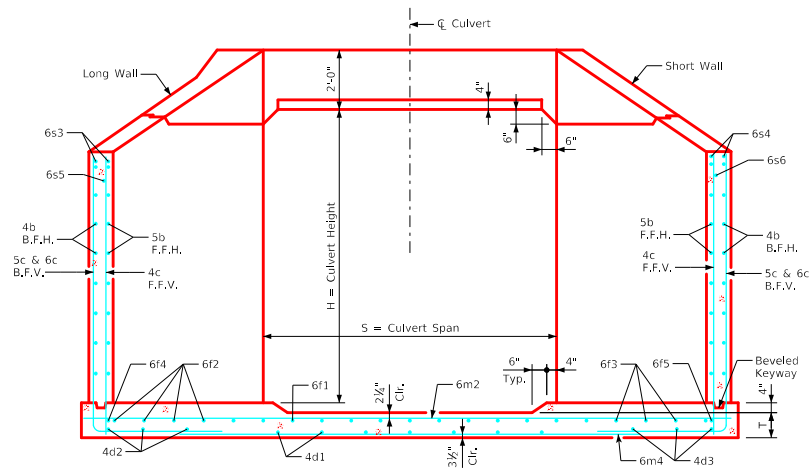
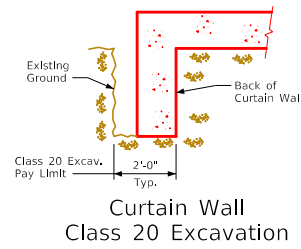


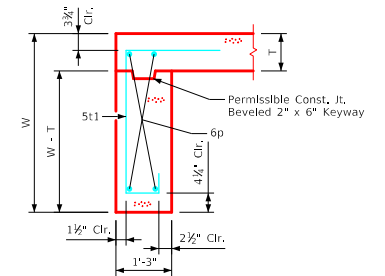
ENGLISH\FRD\SIGNED\INGLECULVERTS\FWH.DGN - FWH 30-4-21 - THIS SHEET ISSUED 02-2021.



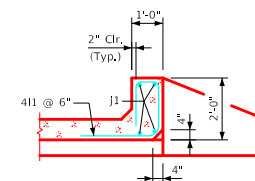
Typical Section - Near Center of Apron



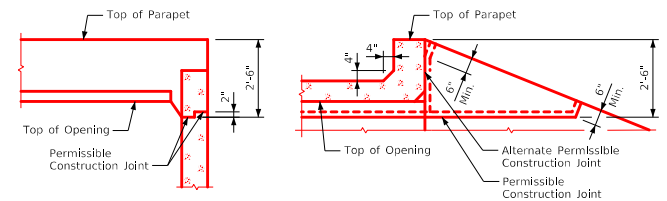
Curtain Wall
Class 20 Excavation



Section thru Curtain Wall

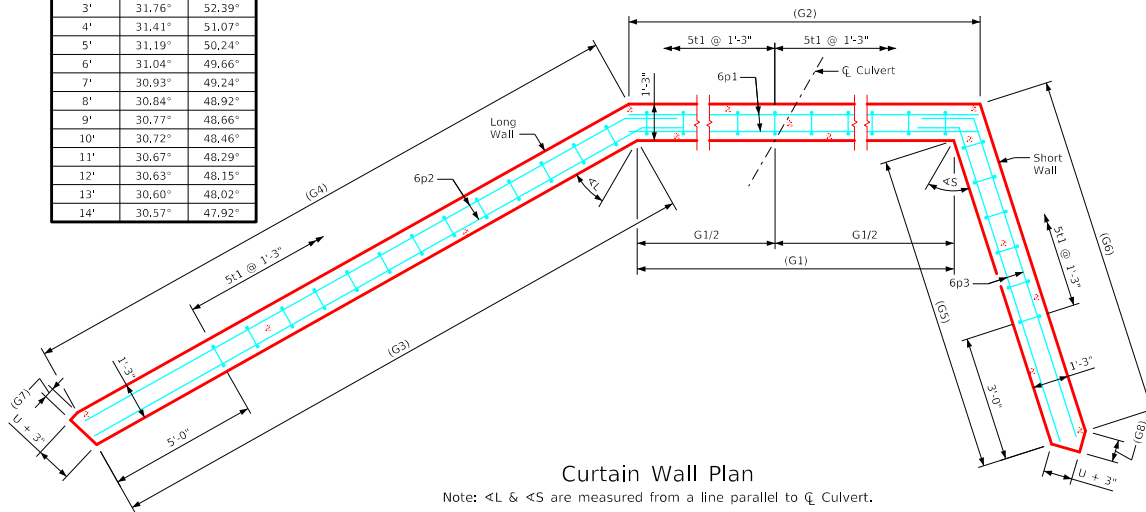


Section thru Parapet



Top of Wingwall Details

Culvert Height (H)	Angle	
	<L	<S
3'	31.76°	52.39°
4'	31.41°	51.07°
5'	31.19°	50.24°
6'	31.04°	49.66°
7'	30.93°	49.24°
8'	30.84°	48.92°
9'	30.77°	48.66°
10'	30.72°	48.46°
11'	30.67°	48.29°
12'	30.63°	48.15°
13'	30.60°	48.02°
14'	30.57°	47.92°



Curtain Wall Plan

Note: <L & <S are measured from a line parallel to \bar{C} Culvert.

Notes:

1. See Sheet FWH G2-21 for General Notes, Specifications, and Design Stresses.
2. See Sheet FWH 30-2-21 for dimensions table.

LATEST REVISION DATE	APPROVED BY BRIDGE ENGINEER		
		Standard Design - Single Reinforced Concrete Box Culverts	
		Flared Wing Headwalls	
		February, 2021	
		Parapet & Curtain Wall Details 30° Skew	FWH 30-4-21