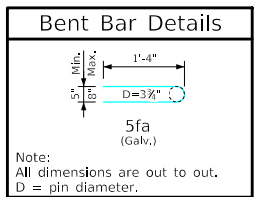
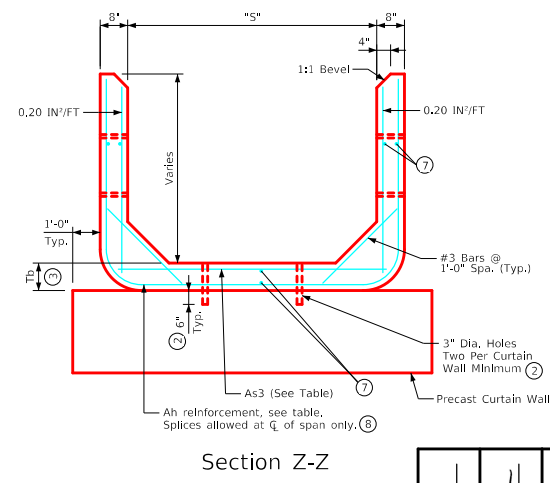
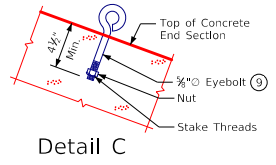
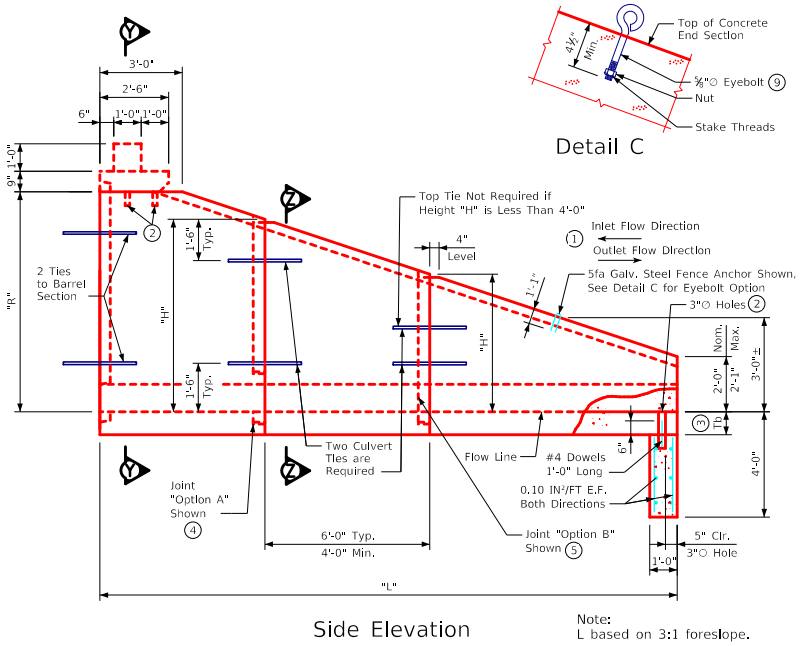
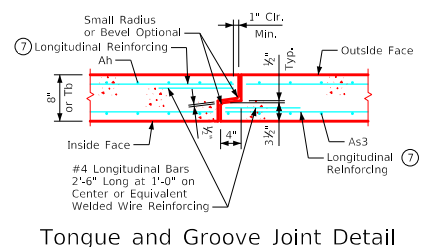
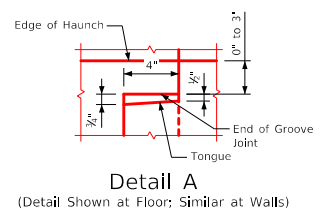
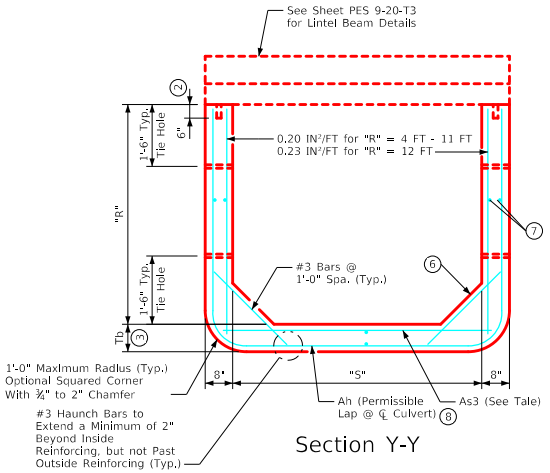
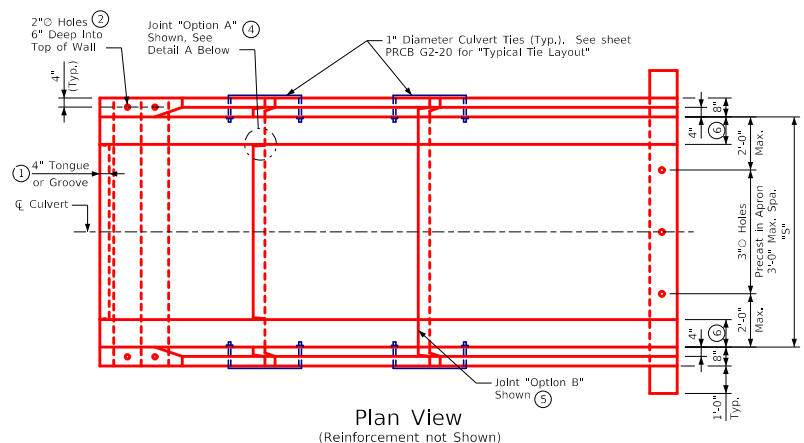


ENGLISHIGNEDPRECASTCULVERTS.DGN - PES 1-20-T3 S1 - THIS SHEET ISSUED 12-2020.



Note: See sheet PES 2-20-T3 for additional information and notes used in conjunction with this sheet.

LATEST REVISION DATE	
	Standard Design <b>Single Precast Reinforced Concrete Box Culverts</b> December, 2020
	Type 3 End Section Details For Skews up to 7.5°; 6' - 12' Spans
APPROVED BY BRIDGE ENGINEER	PES 1-20-T3 Sheet 1 of 2