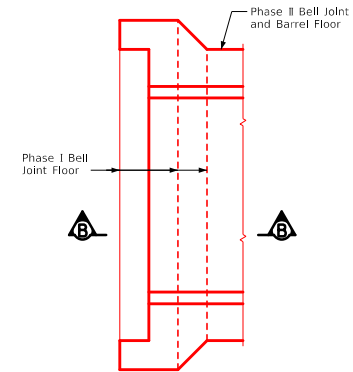
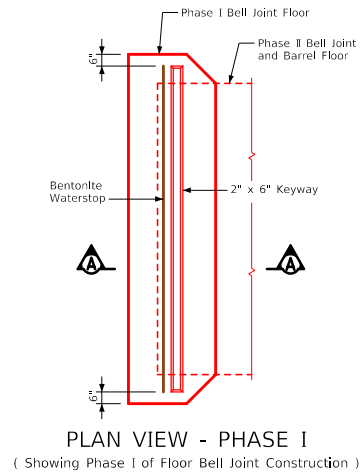
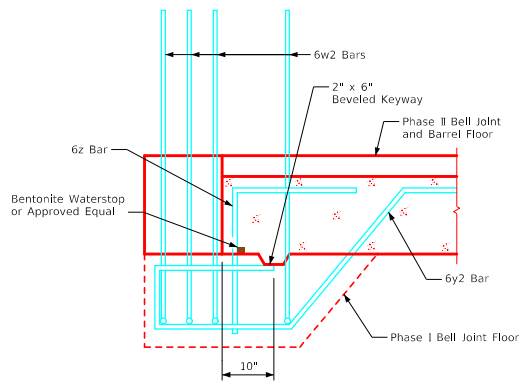


SECTION A-A
BELL JOINT AT FLOOR




PLAN VIEW - PHASE II
(Showing Phase II of Floor Bell Joint and Barrel Floor Construction)



SECTION B-B
BELL JOINT AT FLOOR

NOTES:

1. The details shown on this sheet are an option for the contractor to construct the floor of the bell joint with a permissible construction joint as shown.
2. Reinforcing steel will be placed prior to placing the Phase I concrete.
3. The cost of the waterstop is considered incidental to the project.
4. A 2" x 6" beveled keyway will be formed to the distance shown and location noted before placing the concrete.
5. For details and dimensions of the bell joint refer to Sheet PT-CBJ 1-20.

LATEST REVISION DATE	APPROVED BY BRIDGE ENGINEER	 Cast-in-Place Standard Design - Walkways and Trails Reinforced Concrete Pedestrian Tunnel August, 2020	
		Pedestrian Tunnel Bell Joints	PT-CBJ 2-20