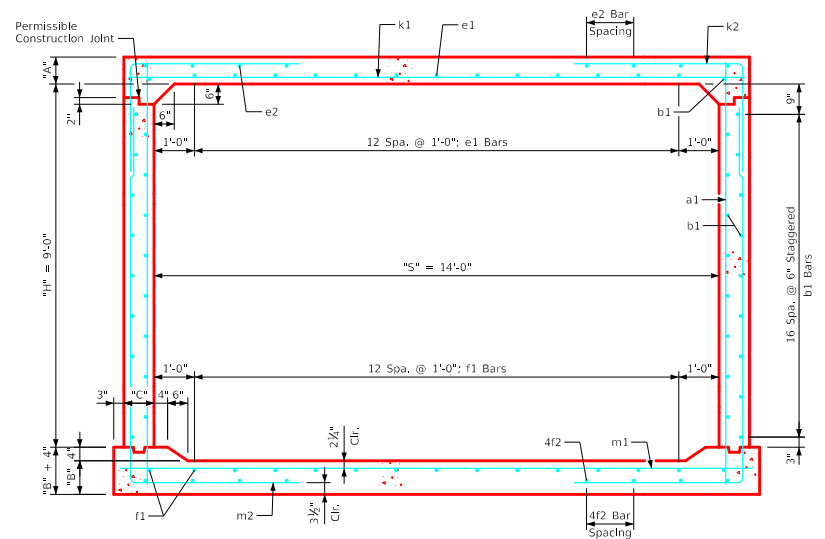
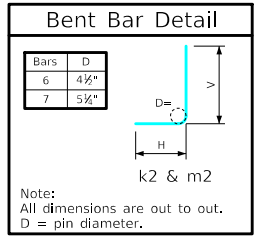


Variable Dimensions and Quantities for 14' x 9' Barrel Sections

Dimensions										Bar List																		Quantities																					
Fill	S	H	A	B	C	D	a1		b1		e1		e2		f1		f2		k1			k2			k9			m1		m2		m9		Concrete (CY/FT)				Steel (LB/FT)											
0	1	2	3-5	6-8	9-10	11-13	14-16	Size	Sp.	L	Size	Sp.	No.	Size	Sp.	No.	Size	Sp.	No.	Size	Sp.	L	Size	Sp.	L	Size	Sp.	L	Size	Sp.	L	Size	Sp.	L	Slab	Floor	Walls	Total											
0	14	9	14	14	9	9	4	9	11'-3"	4	6	36	5	12	13	4	15	10	4	12	15	4	17	8	6	6	15'-2"	6	9	9'-10"	5'-10"	4'-0"	6	15'-2"	6	6	15'-8"	6	9	14'-5"	4'-10"	9'-7"	6	15'-8"	0.702	0.728	0.479	1.909	277.21
1	14	9	13.5	14	9	9	4	9	11'-2"	4	6	36	5	12	13	4	16	10	4	12	15	4	17	8	6	6	15'-2"	6	9	10'-2"	6'-2"	4'-0"	6	15'-2"	6	6	15'-8"	6	9	14'-7"	5'-0"	9'-7"	6	15'-8"	0.678	0.728	0.479	1.885	279.16
2	14	9	9	10.5	9	9	4	12	10'-6"	4	6	36	6	12	13	4	16	8	4	12	15	4	15	8	9	9	15'-2"	7	9	8'-6"	4'-7"	3'-11"	7	15'-2"	7	6	15'-8"	7	9	13'-9"	4'-5"	9'-4"	7	15'-8"	0.463	0.555	0.479	1.497	345.08
3-5	14	9	9	11	9	9	4	12	10'-7"	4	6	36	4	12	13	4	14	8	4	12	15	4	14	8	7	6	15'-2"	7	9	8'-4"	4'-2"	4'-2"	7	15'-2"	7	6	15'-8"	7	9	13'-5"	4'-1"	9'-4"	7	15'-8"	0.463	0.580	0.479	1.522	322.50
6-8	14	9	10	12.5	9	9	4	12	10'-9"	4	6	36	4	12	13	4	13	8	4	12	15	4	12	8	8	6	15'-2"	7	9	8'-0"	4'-0"	4'-0"	8	15'-2"	8	6	15'-8"	7	9	13'-2"	3'-8"	9'-6"	7	15'-8"	0.511	0.654	0.479	1.644	358.50
9-10	14	9	10	12.5	9	9	4	12	10'-9"	4	6	36	4	12	13	4	12	8	4	12	15	4	17	6	8	6	15'-2"	6	6	7'-4"	3'-8"	3'-8"	6	15'-2"	8	6	15'-8"	6	6	12'-11"	3'-5"	9'-6"	6	15'-8"	0.511	0.654	0.479	1.644	358.89
11-13	14	9	12	14.5	9	9	4	12	11'-1"	4	6	36	4	12	13	4	15	6	4	12	15	4	15	6	8	6	15'-2"	6	6	7'-0"	3'-2"	3'-10"	6	15'-2"	9	6	15'-8"	6	6	12'-10"	3'-2"	9'-8"	6	15'-8"	0.606	0.753	0.479	1.838	378.66
14-16	14	9	12.5	15	9	9	4	12	11'-2"	4	6	36	4	12	13	4	14	6	4	12	15	4	15	6	9	6	15'-2"	6	6	6'-11"	3'-0"	3'-11"	6	15'-2"	9	6	15'-8"	6	6	12'-9"	3'-1"	9'-8"	6	15'-8"	0.630	0.777	0.479	1.886	400.24



14' x 9' Barrel Section

- Notes:**
- Dimensions listed on this sheet to be used in conjunction with Sheet RCB G3-20.
 - The k2 and m2 bars horizontal legs may lap in low fill situations.
 - Fill dimensions "S" and "H" are in feet.
 - Dimensions "A", "B", "C", "D", and "Sp." listed in the bar list are in inches.
 - Dimensions "L", "H", "V" are in feet and inches.

LATEST REVISION DATE	 APPROVED BY BRIDGE ENGINEER		
		Standard Design Single Reinforced Concrete Box Culverts July, 2020	
		Culvert Barrel Details 14' x 9' Barrel Sections	RCB 14-9-20

ENGLISHLRFDDESIGNEDSINGLVCULVERTS.DGN - RCB 14-9-20 - THIS SHEET ISSUED 07-2020.