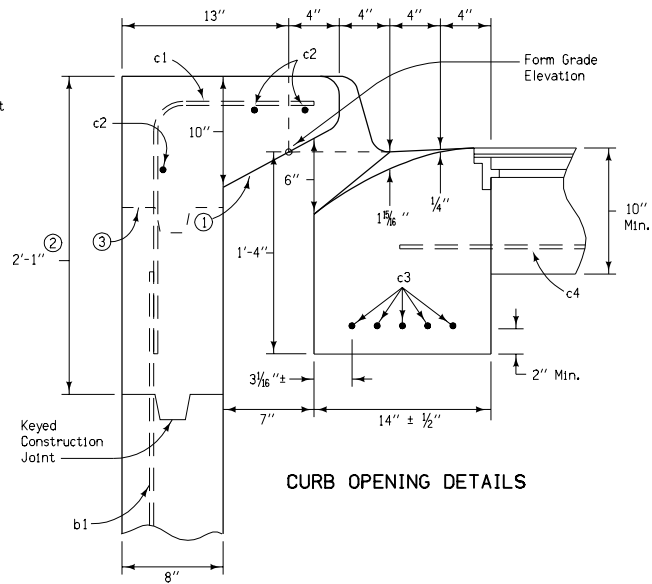


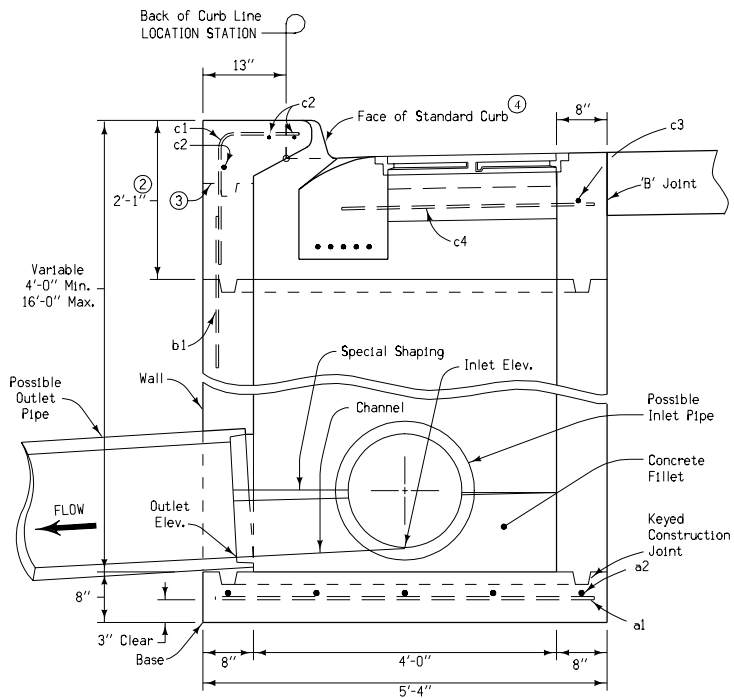
PLAN VIEW



CURB OPENING DETAILS

Contract Item:  
Intake, RA-41

- ① 2:1 slope (horizontal:vertical)
- ② Shall be 39 inches when attaching the RA-42 extension unit.
- ③ Additional keyed construction joint when attaching the RA-42 extension unit.
- ④ Dimensions shown are for the construction of a 6 inch standard curb as a part of the pavement. Modifications may be made to conform to other curb shapes.

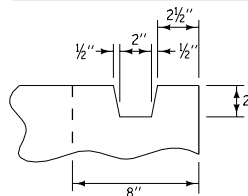


SECTION A-A

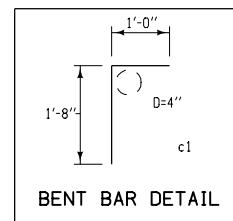
Placing sequence: 1. Base; 2. Walls; 3. Top; 4. Insert

REINFORCING BAR LIST							
BAR	SIZE	LOCATION	SHAPE	NO.	LENGTH	WEIGHT	SPACING
a1	4	Base	—	5	5'-0"	17	14"
a2	4	Base	—	5	5'-0"	17	14"
b1	4	Wall	—	5	3'-0"	10	14"
c1	4	Top	┌	5	2'-8"	9	14"
c2	4	Top	—	3	5'-0"	10	See Detail
c3	4	Top	—	6	5'-0"	20	See Detail
c4	4	Top	—	6	3'-4"	13	See Detail
Total						96 lbs.	

For joint details, see Standard Road Plans RH-50, RH-51, and RH-52.



KEYED CONSTRUCTION JOINT DETAIL



BENT BAR DETAIL

**Iowa Department of Transportation**  
Highway Division

**STANDARD ROAD PLAN RA-41**

REVISION: Change 'EE' Joint to 'ED' Joint; remove notes covered in the Specifications Book; change title.

*William J. Steen*  
APPROVED BY DESIGN METHODS ENGINEER

REVISION NO.	3
REVISION DATE	04-19-05

CURB INTAKE  
(UNDER PAVEMENT)