

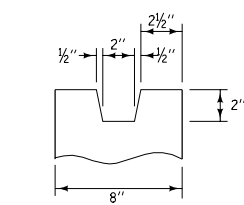
PLAN VIEW
(RA-42 EXTENSION AND RA-41 INTAKE)

Extension unit may be used on either or both sides of intakes. Details are similar when extension unit is on the opposite side.

Dimensions shown are for the construction of a 6 inch standard curb as a part of pavement. Modifications may be made to conform to other curb shapes.

Contract Item:
Intake Extension Unit, RA-42

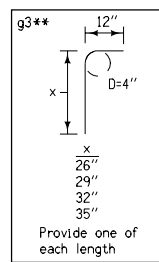
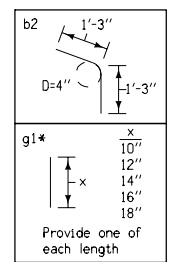
① The location station is where the centerline of intake meets the back of curb line.



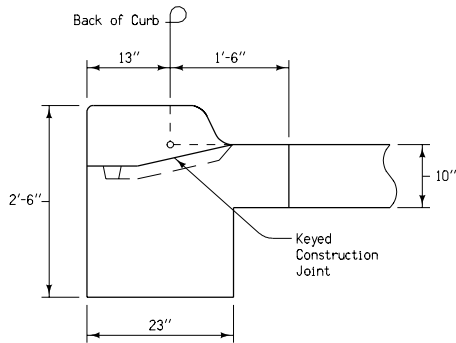
KEYED CONSTRUCTION JOINT DETAIL

Placing sequence: 1. Base; 2. Walls and Extension; 3. Top; 4. Insert

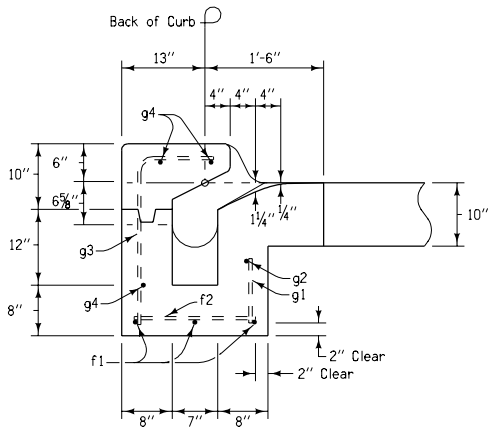
REINFORCING BAR LIST							
BAR	SIZE	LOCATION	SHAPE	NO.	LENGTH	WEIGHT	SPACING
b2	4	Intake Wall		3	2'-6"	5.0	9"
f1	4	Bottom	—	3	4'-9"	9.5	9"
f2	4	Bottom	—	4	1'-7"	4.2	18"
g1	4	Wall	—	5	Varies*	3.9	12"
g2	4	Wall	—	1	4'-8"	3.1	-
g3	4	Top		4	Varies**	6.8	18"
g4	4	Top	—	3	6'-4"	12.7	-
Total						45 lbs.	



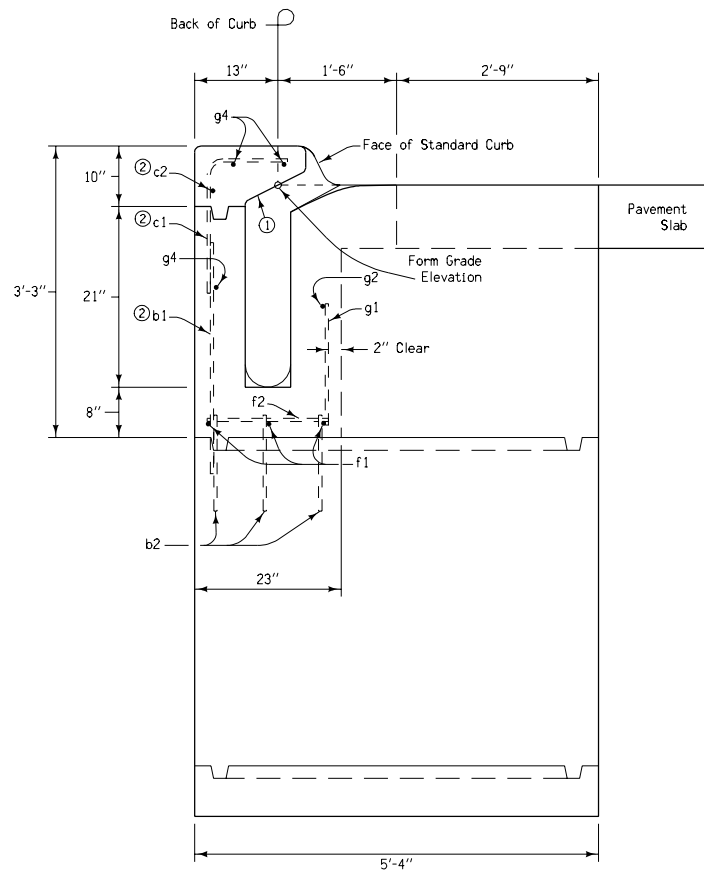
	REVISION
	NEW 10-17-06
	RA-42
STANDARD ROAD PLAN	
SHEET 1 of 3	
REVISIONS: Replaces paren-number standards with one multi-page standard.	
 APPROVED BY DESIGN METHODS ENGINEER	
INTAKE EXTENSION UNIT (FOR STANDARD RA-41 INTAKE)	



SECTION A-A



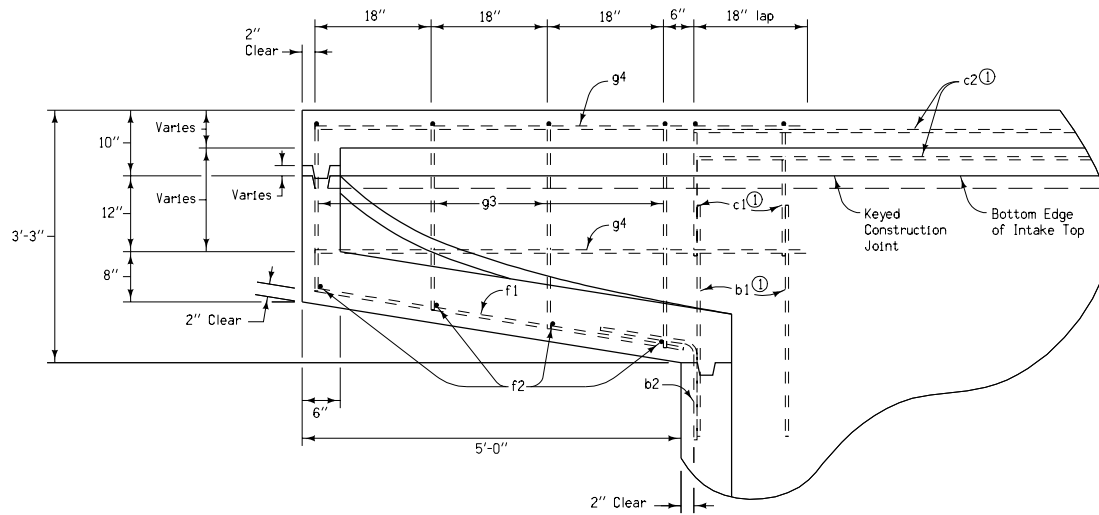
SECTION B-B



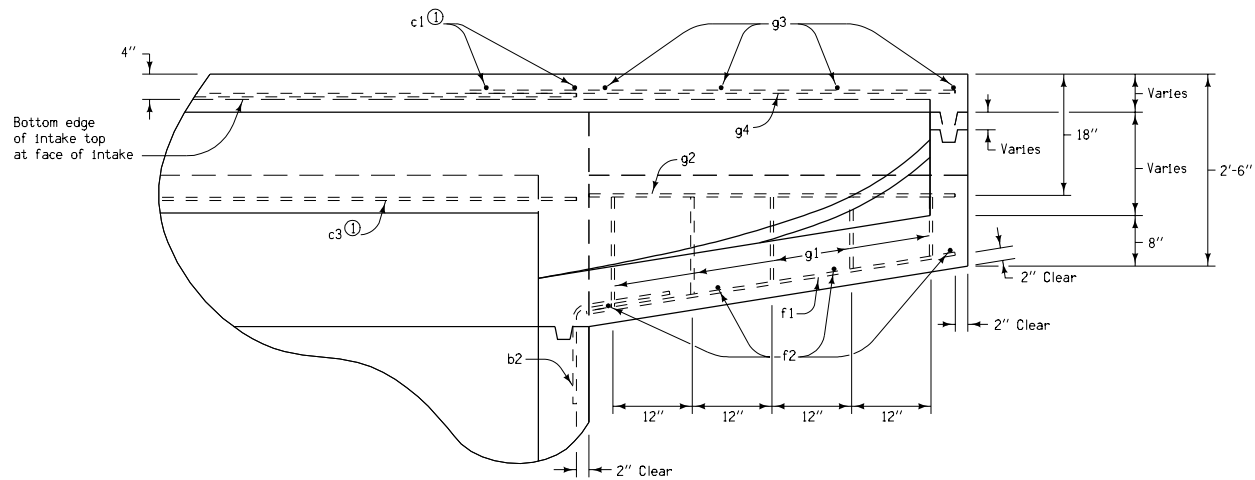
SECTION C-C

- ① 2:1 Slope (Horizontal:Vertical)
- ② See Standard Road Plan RA-41 for reinforcing.

 Iowa Department of Transportation	REVISION	
	NEW	10-17-06
	RA-42	
STANDARD ROAD PLAN		SHEET 2 of 3
REVISIONS: Replaces paren-number standards with one multi-page standard.		
 APPROVED BY DESIGN METHODS ENGINEER		
INTAKE EXTENSION UNIT (FOR STANDARD RA-41 INTAKE)		




SECTION D-D



SECTION E-E

① See Standard Road Plan RA-41 for reinforcing.

 Iowa Department of Transportation	REVISION	
	NEW	10-17-06
STANDARD ROAD PLAN	RA-42	
	SHEET 3 of 3	
<small>REVISIONS: Replaces paren-number standards with one multi-page standard.</small>		
<i>Deanna Mayfield</i> <small>APPROVED BY DESIGN METHODS ENGINEER</small>		
INTAKE EXTENSION UNIT (FOR STANDARD RA-41 INTAKE)		