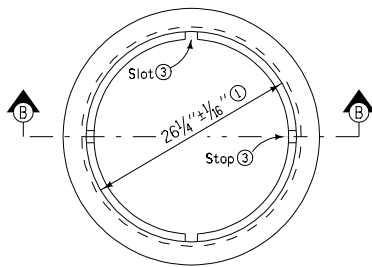
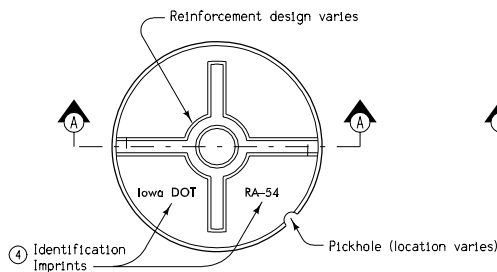


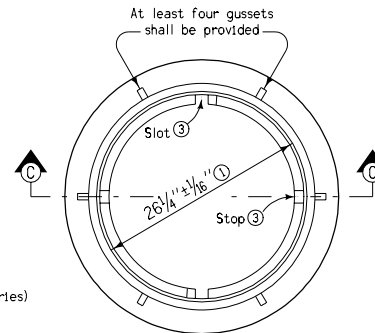
PLAN OF COVER TOP



PLAN OF FRAME

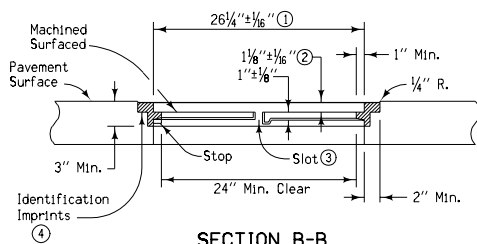


PLAN OF COVER BOTTOM



PLAN OF FRAME

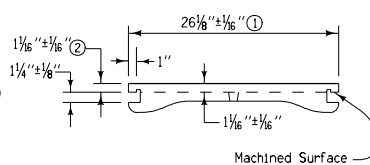
- ① Machining of vertical surfaces will be allowed if needed to conform to dimensional requirements.
- ② After machining.
- ③ Slots and stops for retaining lug are to be provided at 180 degrees as shown.
- ④ An Identification Imprint "Iowa DOT RA-54" shall be placed on each frame and cover.



SECTION B-B

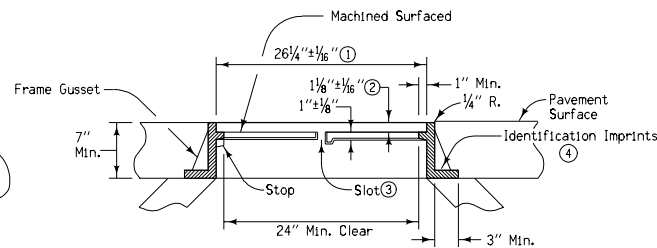
TYPE 1 FRAME

SLAB TYPE FOR CAST UTILITY ACCESSSES



SECTION A-A

COVER DETAILS



SECTION C-C

TYPE 2 FRAME

NECK BEARING TYPE FOR BUILT-UP UTILITY ACCESSSES

MINIMUM WEIGHT		
	Frame	Cover
Type 1	150 lbs.	145 lbs.
Type 2	230 lbs.	145 lbs.

Iowa Department of Transportation  
Highway Division

**STANDARD ROAD PLAN RA-54**

REVISION: Remove General Notes; Add Circle Note 4; and Change Title.	REVISION NO.
	2
<i>William J. Stein</i>	REVISION DATE
APPROVED BY DESIGN METHODS ENGINEER	10-19-04

CAST UTILITY ACCESS COVER - HEAVY  
(SUBJECT TO ROADWAY TRAFFIC)