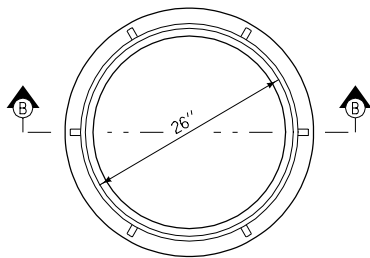
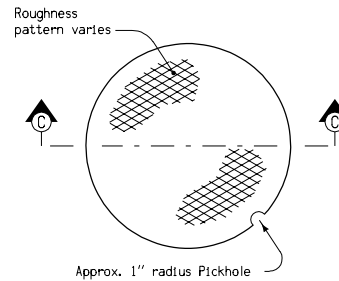


PLAN OF FRAME

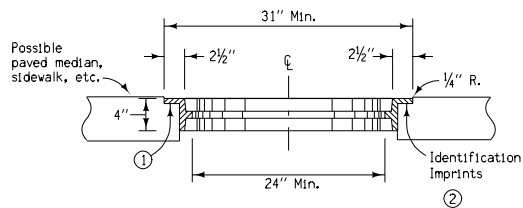


PLAN OF FRAME



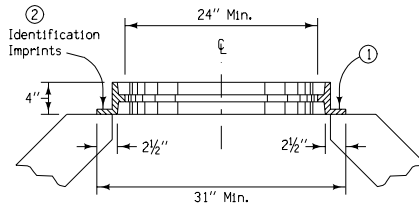
PLAN OF COVER TOP

- ① Flange thickness 5/8" minimum.
- ② An identification imprint "Iowa DOT RA-55" shall be placed on each frame and cover.



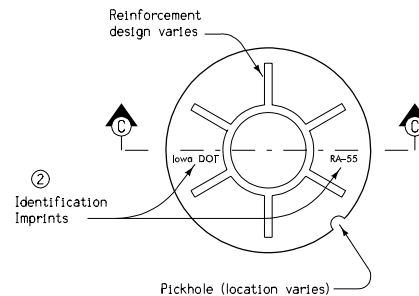
SECTION A-A  
TYPE 1 FRAME

SLAB TYPE FOR CAST UTILITY ACCESSSES



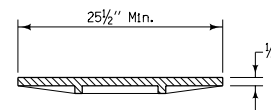
SECTION B-B  
TYPE 2 FRAME

NECK BEARING TYPE FOR BUILT-UP UTILITY ACCESSSES



PLAN OF COVER BOTTOM

Minimum Weight	
Frame	Cover
105 lbs.	85 lbs.



SECTION C-C  
COVER DETAILS

<b>STANDARD ROAD PLAN RA-55</b>	
REVISION: Remove General Notes; Add Circle Note 2; and Change Title.	REVISION NO. 2
<i>William J. Stein</i> APPROVED BY DESIGN METHODS ENGINEER	REVISION DATE 10-19-04
<b>CAST UTILITY ACCESS COVERS - LIGHT (NOT SUBJECT TO ROADWAY TRAFFIC)</b>	