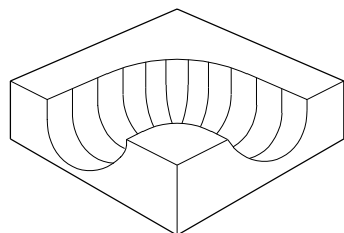
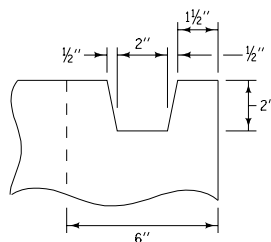


TYPICAL SECTION A-A

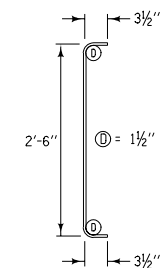
SHOWING THE DESIRED LOCATION OF INLET AND OUTLET



PERSPECTIVE VIEW OF CONCRETE FILLET

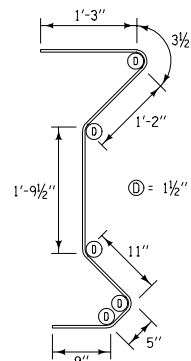


KEYED CONSTRUCTION JOINT DETAIL



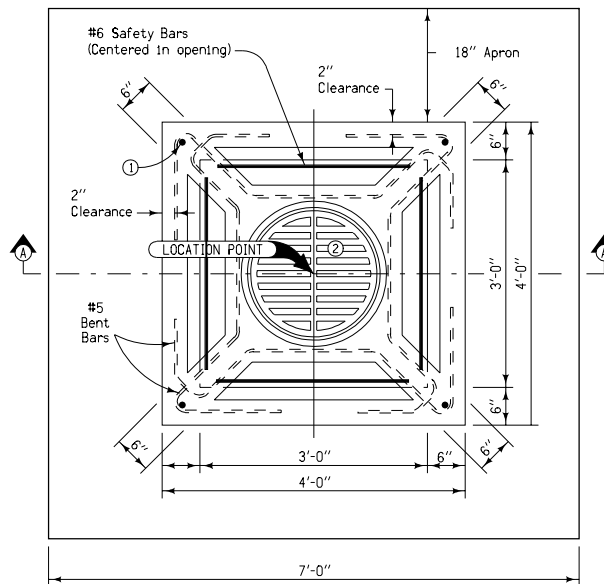
DETAIL OF SAFETY BARS FOR INTAKE TOP

Length of Bar = 3'-0"
(4 bars required)



DETAIL OF REINFORCING BARS FOR INTAKE TOP

Length of Bar = 6'-7"
(4 bars required)



PLAN

GENERAL NOTES:

Vibration of concrete is required.

A concrete fillet shall be placed in the bottom of the intake approximately as indicated. Special shaping of this fillet is required to provide a smooth channel through the intake. Top surface of the fillet shall slope at a rate of approximately 12:1 (Horizontal: Vertical) toward the channel.

Top unit of intake may be poured in field or precast. Alignment hole shall be 1 inch diameter and 3 inches deep (placed 3 inches from each side at corners of unit) if precast.

Price bid for "Intake, RA-62" shall include all necessary excavation, backfill, and satisfactory connections to new or existing storm sewer, as well as furnishing all materials and constructing intake as shown hereon.

- ① #6 x 9 inch alignment pins (4 bars required). Alignment pins required only when top is precast.
- ② Standard Road Plan RA-66C Type 9 cast iron frame and grate.
- ③ #5 Reinforcing bars (3'-8" long) spaced at 9' 12" centers both ways (8 bars required)

Iowa Department of Transportation
Highway Division

STANDARD ROAD PLAN RA-62

REVISION: Require Concrete Fillet	REVISION NO. 2
<i>William J. Allen</i> APPROVED BY DESIGN METHODS ENGINEER	REVISION DATE 04-15-03

OPEN DITCH INTAKE
(VERTICAL THROAT AND GRATE)