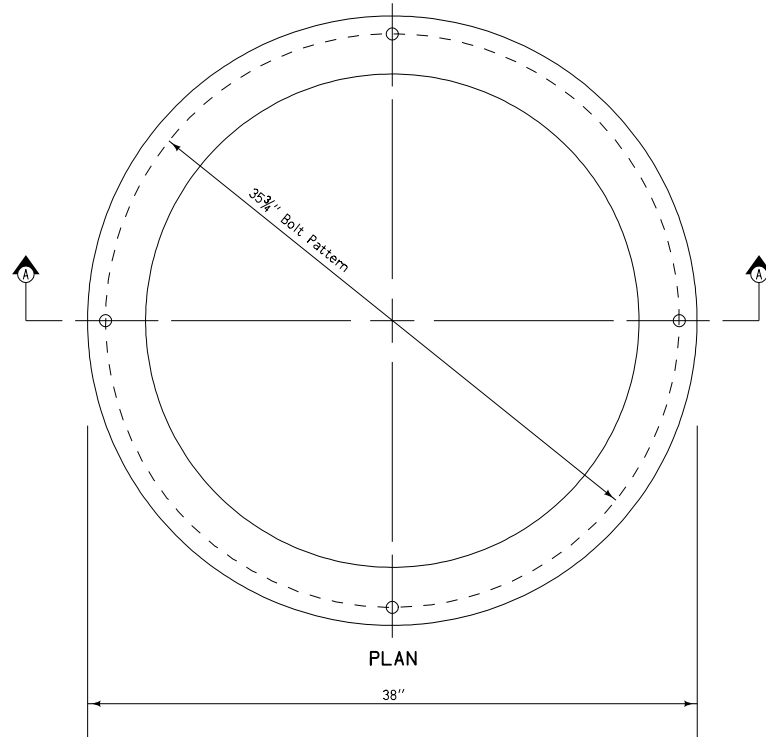
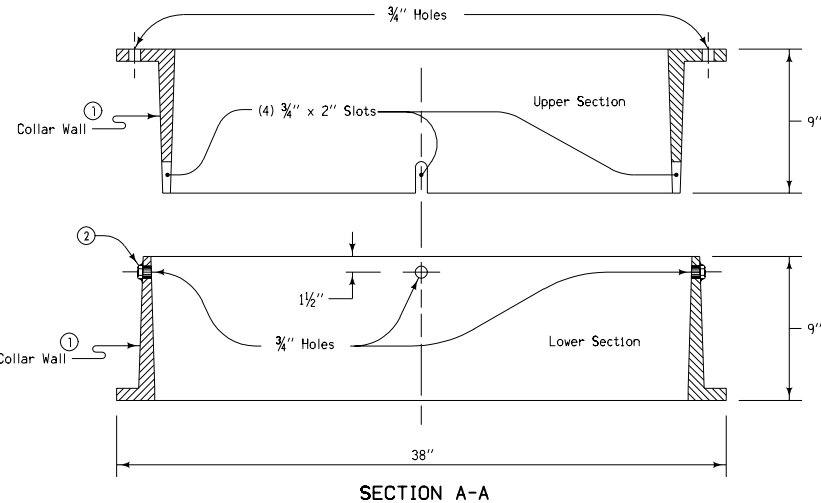


COLLAR DETAILS



PLAN



SECTION A-A

- ① Wall thickness may vary uniformly from base to the top or bottom of the casting.
- ② Tack weld (4) 12" nuts to outside of bottom settlement collar or drill and tap (4) holes for 12" Cap Screws in bottom settlement collar.
- ③ Remove the (4) 12" Cap Screws after surrounding concrete has set.

MINIMUM WEIGHT	
Upper Section	210 lbs.
Lower Section	210 lbs.

See Standard Road Plans RA-67A and RA-67B for details of Grate and Frame.

STANDARD ROAD PLAN RA-67C	
REVISION: Remove General Notes.	REVISION NO. 3
<i>William J. Stein</i> APPROVED BY DESIGN METHODS ENGINEER	REVISION DATE 10-19-04
SETTLEMENT COLLAR CASTINGS	