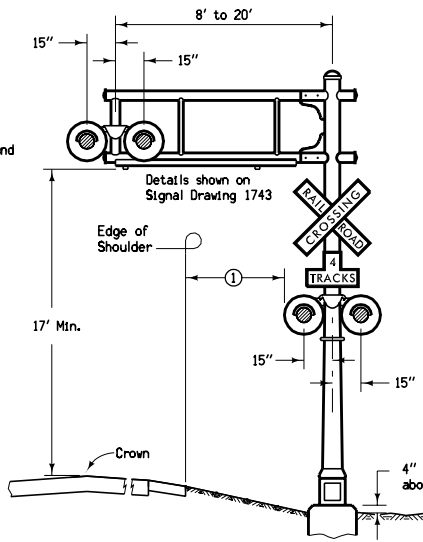
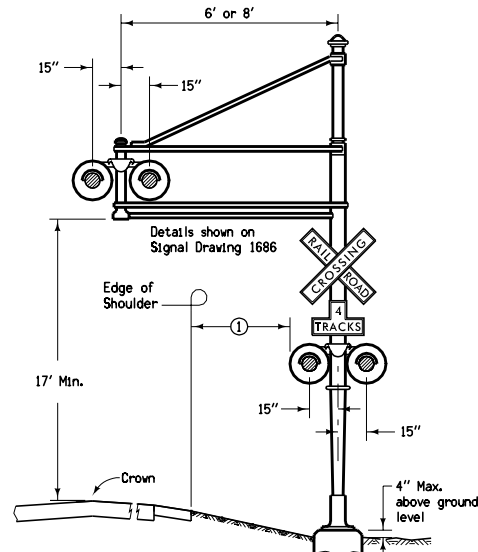


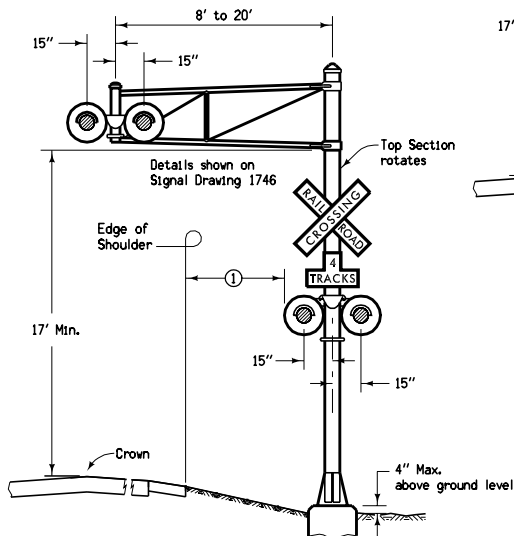
HIGHWAY CROSSING SIGNAL
ROTATABLE 8 FT. TO 20 FT. CANTILEVER SPAN



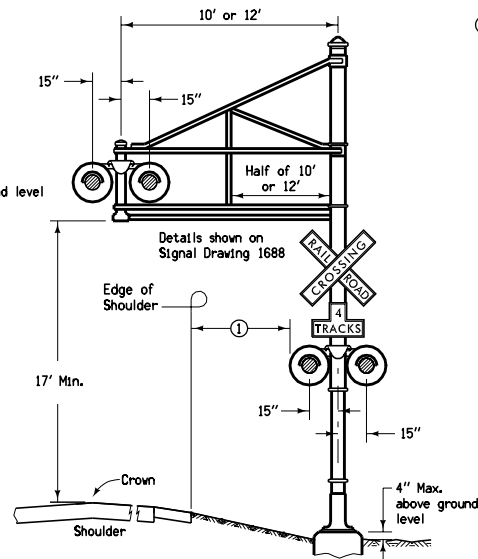
HIGHWAY CROSSING SIGNAL
FIXED 8 FT. TO 20 FT. CANTILEVER SPAN



HIGHWAY CROSSING SIGNAL
FIXED 6 FT. AND 8 FT. CANTILEVER SPAN



HIGHWAY CROSSING SIGNAL
ROTATABLE 8' TO 20' CANTILEVER SPAN



HIGHWAY CROSSING SIGNAL
FIXED 10 FT. AND 12 FT. CANTILEVER SPAN

All drawings of signals are typical and variations in the mounting are permissible (see MUTCD).

Signals furnished under this plan for installation on Federal Grade Crossing projects are subject to approval by the Federal Highway Administration.

Signals furnished shall be the latest approved design of the manufacturer.

Details and dimensions not shown on these plans shall conform with current AAR Signal Section recommended practice. Reference numbers are taken from AAR Signal Section Manual.

All types to be provided with bell when required.

Concrete bases for signals shall be in accordance with current applicable AAR Signal Section Drawings for such bases.

① Minimum lateral clearance is 6 feet from the edge of the highway shoulder, but not less than 12 feet from the edge of the traveled way in rural areas nor less than 2 feet from the face of curb in urban areas.

 Iowa Department of Transportation	REVISION
	10 10-16-07
	RD-6
STANDARD ROAD PLAN	
SHEET 1 of 1	

REVISIONS: Showed offsets from edge of shoulder.
Deanna Macfitt
APPROVED BY DESIGN METHODS ENGINEER

RAILROAD CROSSING SIGNALS
(Supplement to the General Plan)