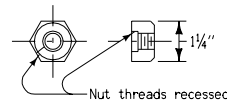
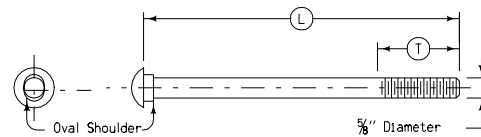
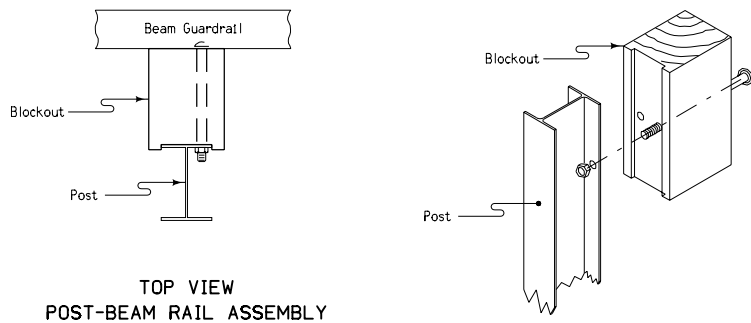


- ① Thrie Beam guardrail, spacer block and post to be attached with two Beam Rail Bolts.
- ② W-Beam guardrail, spacer blocks and post to be attached with one Beam Rail Bolt.
- ③ Optional for handling during galvanizing: All holes $\frac{13}{16}$ " diameter.
- ④ Post length 6'-0" when used in place of wood post on normal beam guardrail installation.



APPLICATION	T	L
Beam Rail Bolt	2 1/2"	10"

L = Length of Bolt T = Min. Thread
DETAILS OF HARDWARE

Iowa Department of Transportation
Highway Division

STANDARD ROAD PLAN RE-12C

REVISION: Place Bolts So They Line Up Vertically (Thrie Beam); Delete Circle Notes 5 and 6.	REVISION NO. 8
<i>William J. Stein</i> APPROVED BY DESIGN METHODS ENGINEER	REVISION DATE 10-19-04

STEEL GUARDRAIL POST AND WOOD BLOCKOUTS