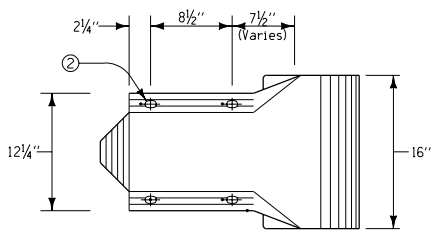
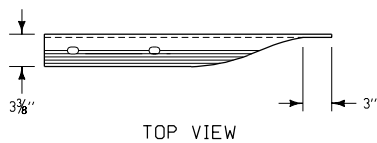


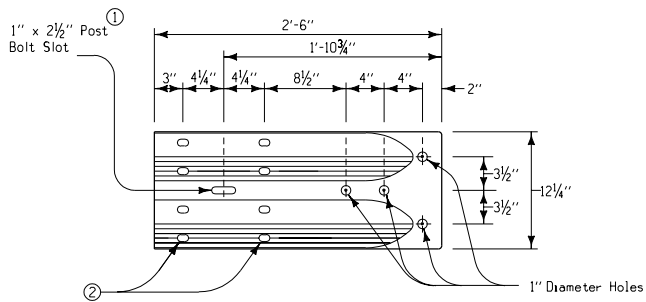
TOP VIEW



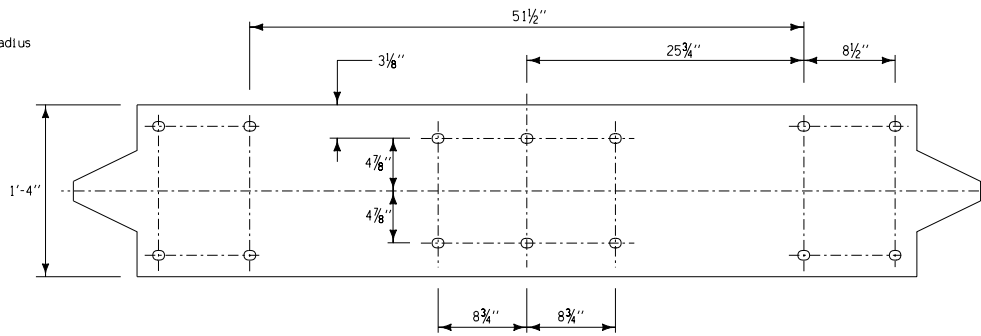
FRONT VIEW
TYPE 'B' TERMINAL SECTION
Rounded End



TOP VIEW

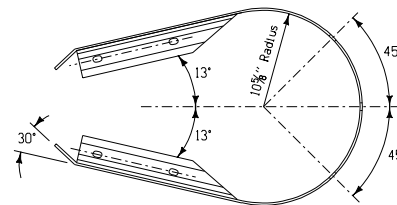


FRONT VIEW
TYPE 'F' TERMINAL SECTION
Terminal Connector

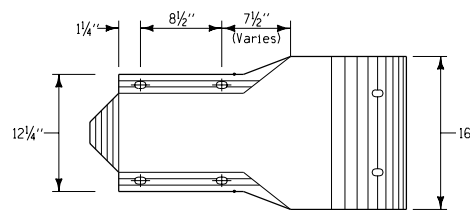


BUFFERED END SECTION
FLAT PLATE LAYOUT

All Slots are 29/32" x 1 1/8"



TOP VIEW



FRONT VIEW
TYPE 'E' TERMINAL SECTION
Buffer End

GENERAL NOTES:

Terminal section shall be required as part of the end treatment for all guardrail installations unless specifically indicated otherwise in project plans.

Fabrication and installation of terminal sections shall be in accordance with current Standard and Supplemental Specifications and other appropriate Standard Road Plans.

Refer to "Tabulation of Guardrail Installations" for additional details of installations.

The thickness of the type 'B' terminals shall not be less than 12 gage. The thickness of type 'E' and 'F' terminals shall not be less than 10 gage.

Furnishing and installing terminal sections will not be paid for separately, but shall be considered incidental to the price bid for other guardrail work required.

- ① If supplied with a 3/4" x 2 1/2" slot, the slot must be field reamed or drilled for a 7/8" bolt.
- ② 29/32" x 1 1/8" slots (acceptable if supplied with 29/32" x 3" slots).

 Iowa Department of Transportation
Project Development Division

STANDARD ROAD PLAN RE-2A

REVISION: Remove references to RE-70 (MEL1) end anchorage.

REVISION NO. 4

APPROVED BY DESIGN METHODS ENGINEER *David P. Keith* 09-14-98 REVISION DATE 01-12-99

FORMED STEEL 'W' BEAM RAILING
TERMINAL SECTIONS