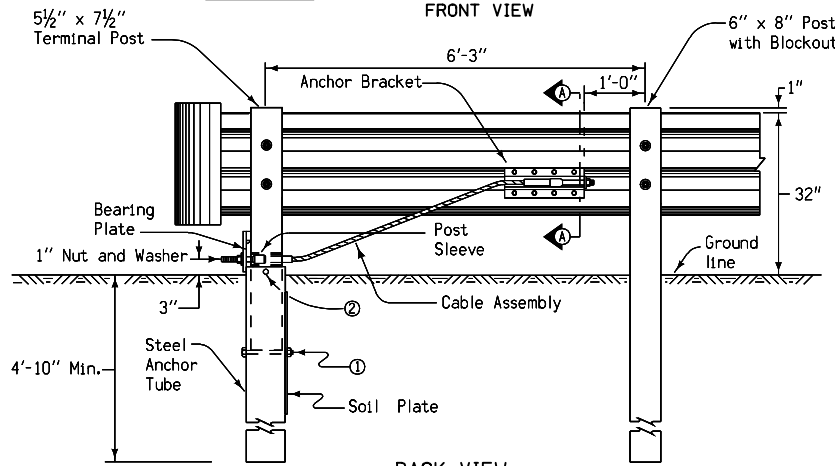
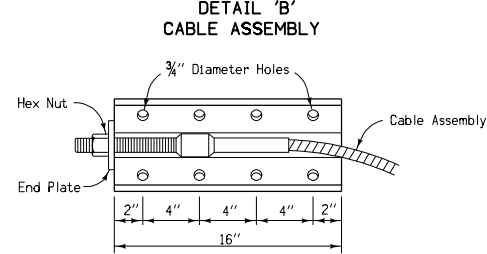
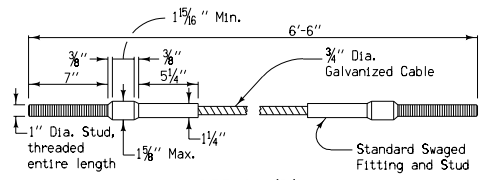
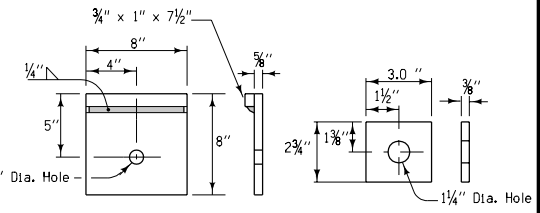


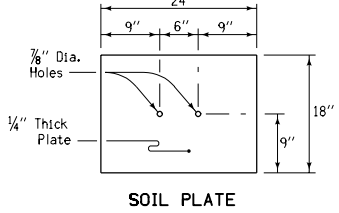
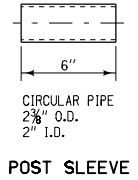
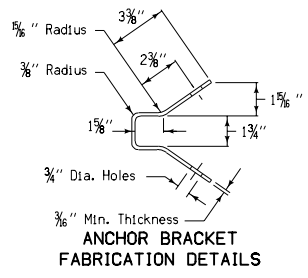
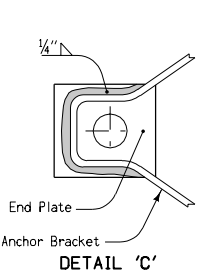
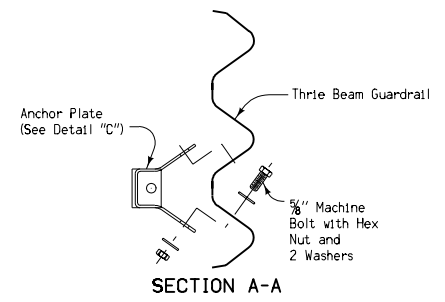
GENERAL NOTES:
 All hardware shall conform to the specifications set forth in "A Guide to Standardized Barrier Hardware", published by AASHTO.

The price bid for "Guardrail, End Anchorage, Beam, RE-33B" shall be considered full compensation for furnishing the materials detailed on this sheet and the construction of the end anchorage. Three-beam guardrail and 6" x 8" post with blockout are not included with this bid item.

- ① Two 7.5" long, 3/4" hex bolt, nut and washers under head and nut.
- ② One 10" long, 3/4" hex bolt, nut and washers under head and nut.



BEARING PLATE END PLATE



STANDARD ROAD PLAN RE-33B	
REVISION: Replace concrete anchor with steel anchor tube and plate.	REVISION NO. 3
<i>William J. Sten</i>	REVISION DATE 10-29-02
APPROVED BY DESIGN METHODS ENGINEER	
BEAM GUARDRAIL END ANCHORAGE (THREE BEAM)	