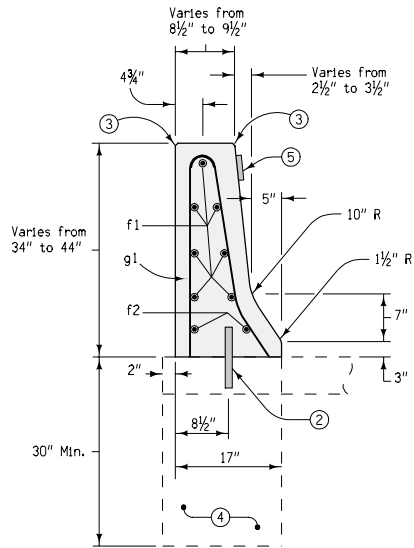
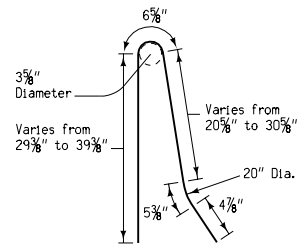


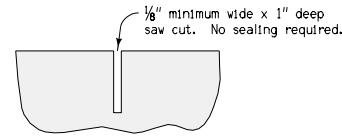
ELEVATION



TYPICAL SECTION



BENT BAR DETAILS



SAWED CONTRACTION JOINT

Saw cut top and front face. Saw cut back if exposed.

CONCRETE QUANTITIES  
for one Transition Section  
1.2 cy

REINFORCING BAR LIST  
for one Transition Section

Bar	Size	Number of Bars	Length	Weight (lbs.)
g1	5	8	*	53.5
f1	5	7	10'-0"	73.5
f2	5	2	5'-8"	11.8

\* Varies from 7'-3" to 5'-7"

Reinforcing bars shall be epoxy-coated, Grade 60. Minimum cover is 2 inches. Reinforcement shall be anchored to prevent movement. Each section shall be secured at the front, back, and at 3'-6" intervals. Method of anchorage shall be approved by the Engineer.

- ① Contraction joints shall be sawed as indicated hereon. Where abutting sections are placed as separate pours, a butt joint may be used. Longitudinal reinforcement shall extend into the abutting section a minimum of 1'-6". For barrier dowelled to pavement, match pavement joints. For free-standing barrier with integral footings, use 20-foot maximum, 15-foot minimum joint spacing.
- ② 1-inch diameter deformed dowel bars of sufficient length to ensure 6-inch minimum embedment in barrier and supporting surface. Dowels shall be either installed in supporting surface when placed or installed in drilled holes using polymer grout or hydraulic cement grout.
- ③ All exposed corners shall be filleted with a 3/4" dressed and beveled strip.
- ④ Concrete footing required when not placed on concrete slab. Where footings are required, excavation shall be to neat lines. The footings may be poured without the use of forms. The Contractor may, as an option, form the footings and backfill around the completed footing.
- ⑤ Barrier markers shall be spaced at 100-foot increments in areas with non-continuous lighting, or 250-foot increments in areas with continuous lighting. Marker color shall be the same as adjacent edge line.

Contract Item:

Concrete Barrier, RE-44G or  
Concrete Barrier, RE-44G and Footing

Tabulation: 108-18B

<p>Iowa Department of Transportation</p> <p><b>STANDARD ROAD PLAN</b></p> <p>REVISIONS: Modified bar spacing and renamed standard. Updated drawings and notes to be consistent with other RE-44 standards.</p> <p><i>Deanna Mayfield</i> APPROVED BY DESIGN METHODS ENGINEER</p>	<p>REVISION</p> <p>5 04-17-07</p>
	<p><b>RE-44G</b></p> <p>SHEET 1 of 1</p>
	<p>34" TO 44" CONCRETE BARRIER TRANSITION SECTION</p>