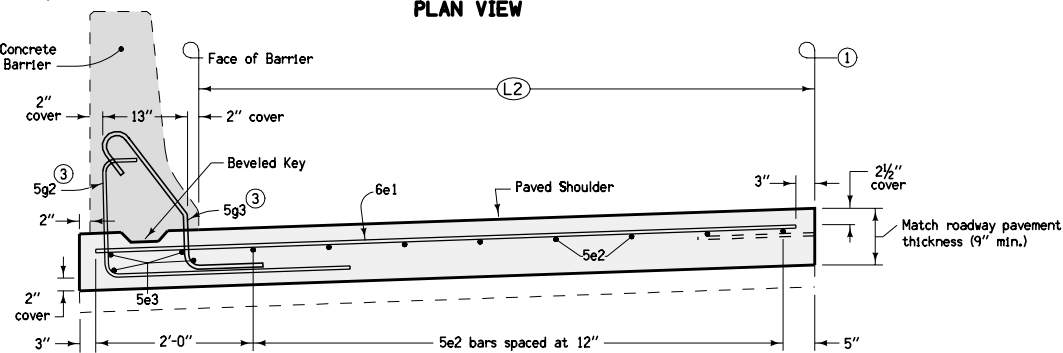


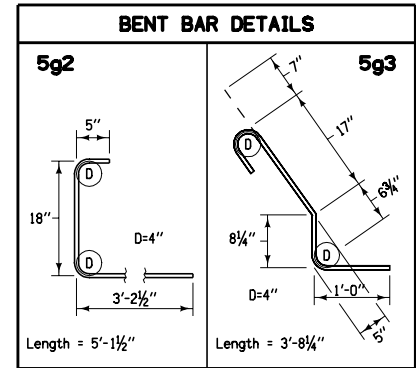
**PLAN VIEW**



**TYPICAL SECTION**

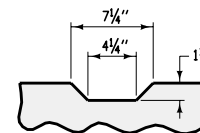
REINFORCING BAR LIST				
Per Shoulder Panel (Approximately 20 Linear Feet)				
(L2)	Bar	Number of Bars	Length	Spacing
4'	6e1	18	5'-1"	12"
	5e2	4	18'-0"	12"
6'	6e1	18	7'-1"	12"
	5e2	6	18'-0"	12"
8'	6e1	18	9'-1"	12"
	5e2	8	18'-0"	12"
10'	6e1	18	11'-1"	12"
	5e2	10	18'-0"	12"
12'	6e1	18	13'-1"	12"
	5e2	12	18'-0"	12"
Applies to all Shoulder Widths	5e3	4	18'-8"	See Drawing
	5g2(3)	15	5'-1½"	1'-4"
	5g3(3)	15	3'-8¼"	1'-4"

ESTIMATED SHOULDER QUANTITIES					
Per Linear Foot					
	(L2)				
	4'	6'	8'	10'	12'
Concrete Sq. Yds.	0.62	0.84	1.06	1.29	1.51



- ① 'L-2' or 'KT-2' joint. When roadway pavement is existing, use 'BT-3' joint. Refer to RH-51.
- ② 'CD' joint. Match roadway joint locations. Refer to RH-50. No 'CD' joint baskets required within 4' of outside edge of shoulder.
- ③ When shoulder will be located under a concrete barrier end section, replace 5g2 and 5g3 bars with reinforcement as shown on RE-44H.

Contract Item:  
Reinforced Paved Shoulder  
Tabulation: 108-18B



**BEVELED KEY**

Use 2 x 8 lumber 8" long to make keys.  
Place keys at 2'-8" centers.

<p>Iowa Department of Transportation</p> <p><b>STANDARD ROAD PLAN</b></p> <p>REVISIONS: Deleted unnecessary notes.</p> <p><i>Deanna Musfeld</i> APPROVED BY DESIGN METHODS ENGINEER</p> <p><b>REINFORCED PAVED SHOULDER FOR CONCRETE BARRIER</b></p>	<p>REVISION</p> <p>1   04-15-08</p>
	<p><b>RE-44J</b></p> <p>SHEET 1 of 1</p>