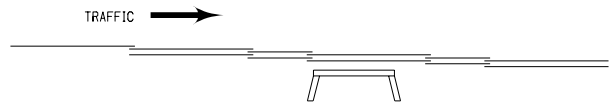
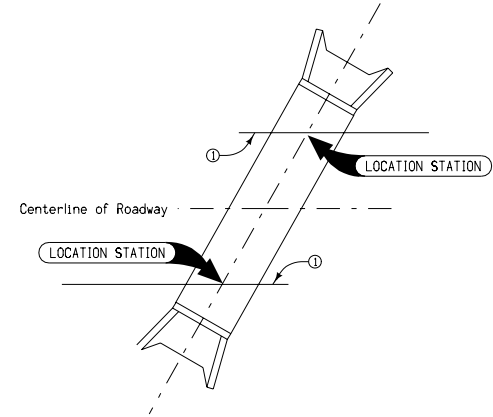
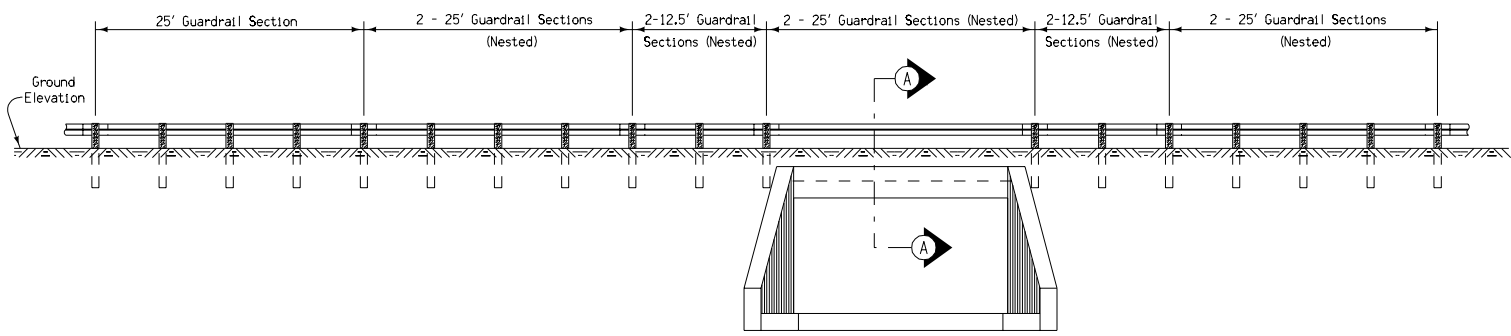


PLAN VIEW



LAPPING PROCEDURE



ELEVATION

GENERAL NOTES:

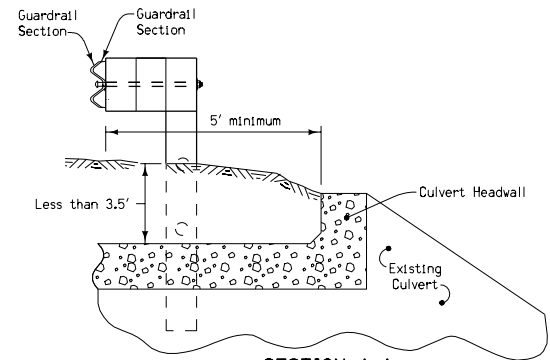
This sheet details installation of W-beam guardrail spanning a culvert. This installation should only be used where it is not possible to get 3.5' of post embedment because of a low-fill situation over a culvert. All posts included in H dimension shall be embedded to a depth of 3.5'.

In this situation, three guardrail posts are eliminated. The maximum culvert size that can be spanned is 24'-4". Three 25 foot sections and two 12.5' sections of W-beam guardrail are nested at the culvert location. "Nesting" is the practice of bolting two sections of guardrail together on the same post, one on top of the other.

Guardrail shall be lapped away from approaching traffic. See detail on this sheet.

Refer to "Tabulation of Guardrail Installations" and applicable Standard Road Plans for additional details regarding installation of guardrail and posts.

- ① Beam Guardrail Installation Line
- ② Double blockouts and CRT posts used at these locations.



SECTION A-A

See Standard Road Plan RE-54 or RE-55 for details of the remainder of the guardrail installation.

Use 6"x8"x6" posts at 6'-3" spacing with 6"x8"x14" spacer blocks.

Iowa Department of Transportation
Highway Division

STANDARD ROAD PLAN RE-66C

REVISION: Changed first three posts on either side to CRT posts. See note 2.	REVISION NO. 3
<i>William J. Stein</i> APPROVED BY DESIGN METHODS ENGINEER	REVISION DATE 10-29-02

W-BEAM GUARDRAIL INSTALLATION
SPANNING CULVERT
24'-4" MAXIMUM CULVERT WIDTH