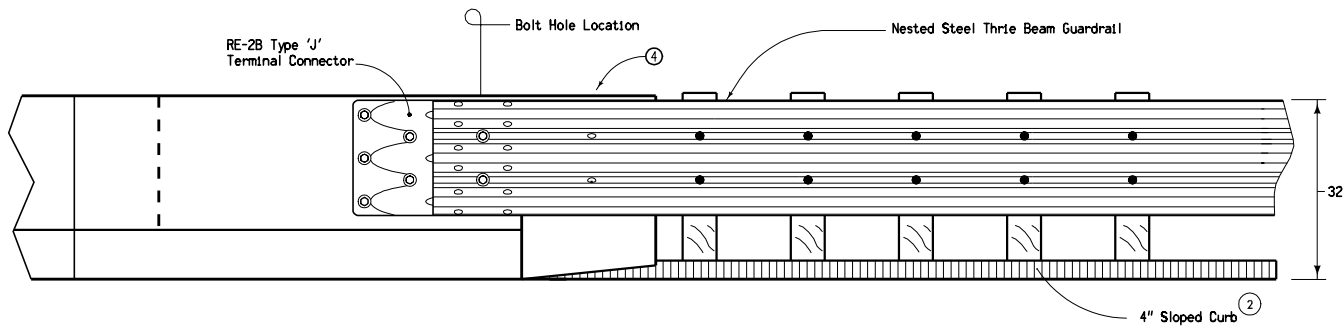
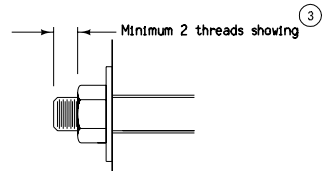


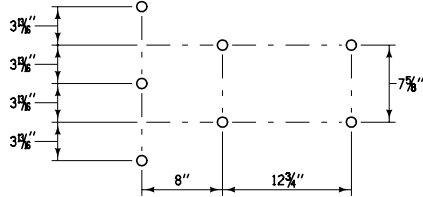
TYPICAL PLAN



TYPICAL ELEVATION

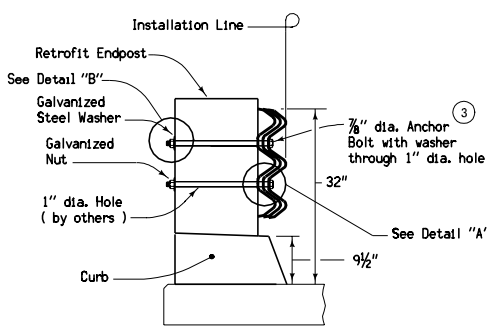


DETAIL "B"

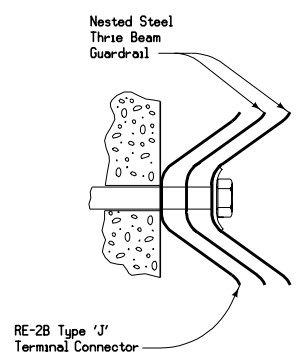


BOLT PATTERN

For RE-2B Type "J" Terminal Section



SECTION B-B



DETAIL "A" (1)

- (1) For attachments on the trailing end of a one-way bridge, the Type "J" terminal connector should be lapped on the outside of the nested thrie beam rails.
- (2) See applicable Bridge Approach Section standards for specific requirements.
- (3) 7/8" anchor bolts shall be of sufficient length to leave a minimum of 2 thread widths outside of the nut.
- (4) First post and blockout shown on RE-68 is skipped.

Contract Items:

Guardrail, End Anchorage, Beam, RE-69

List of Materials for the RE-69B End Anchorage:

- (1) RE-2B Type "J" terminal connector
- (7) Approved 7/8" dia. X sufficient length hex bolts
- (7) Approved 7/8" dia. hex nuts
- (14) Approved 15/16" I.D., 2 1/4" O.D., 5/32" thick washers

Tabulations: 108-8A, 108-31, 108-32

<p>Iowa Department of Transportation</p> <p>STANDARD ROAD PLAN</p> <p>REVISIONS: Showed 4" sloped curb on plan view; corrected Detail "A," end section elevation, and a spelling error.</p> <p style="text-align: right;"><i>Deanna Macfitt</i> APPROVED BY DESIGN METHODS ENGINEER</p>	REVISION 6 10-16-07
	RE-69B SHEET 1 of 1
	GUARDRAIL INSTALLATION CONNECTION TO RETROFIT BRIDGE ENDPST