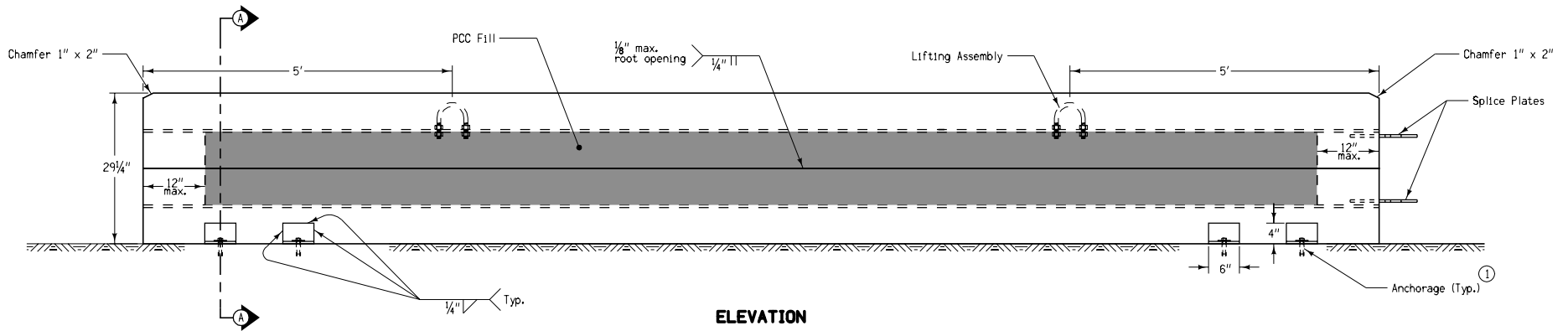
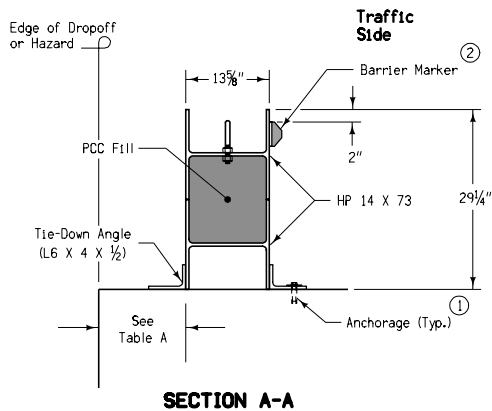


PLAN



ELEVATION



SECTION A-A

All steel shall meet the requirements of ASTM A36.

PCC Fill shall be either an Iowa DOT Construction Specification mix or a commercial ready-mix with a minimum $f_c = 2500$ psi. The PCC Fill shall be deposited by a method approved by the engineer. Limits of the fill shown are approximate and may be rough or slumped depending on the method of bulkheading.

The Contractor shall provide for an approved monitoring schedule with a person on call and available 24 hours a day, each day of the week, to realign barrier which has been struck. Initiation of service shall be within one hour of notification of need.

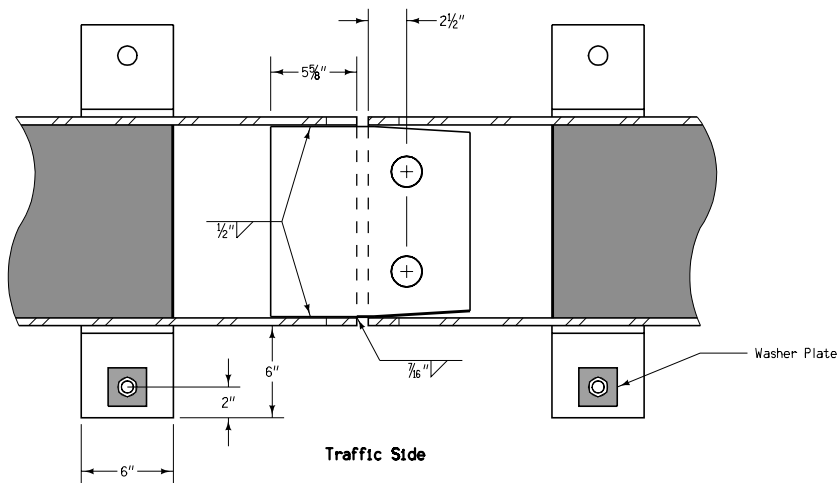
Unless stated otherwise in the contract documents, barrier rail sections shall remain the property of the Contractor and at the completion of the work shall be removed from the site by the Contractor.

① Anchorage for use on bridge decks or PCC pavement only. When installed in one-way traffic situations, anchorage shall be installed on traffic side of barrier only. Anchorage shall consist of a washer plate as shown, a 3/4" dia. x 1-3/4" long ASTM A307 Grade B heavy hex bolt, and a 3/4" Red Head Multi-Set II drop-in anchor (or approved equivalent). Following removal of anchorage, all holes shall be filled with an approved non-shrink grout. The cost of anchorage, when required, shall be included in the price bid for "Temporary Barrier Rail, Steel."

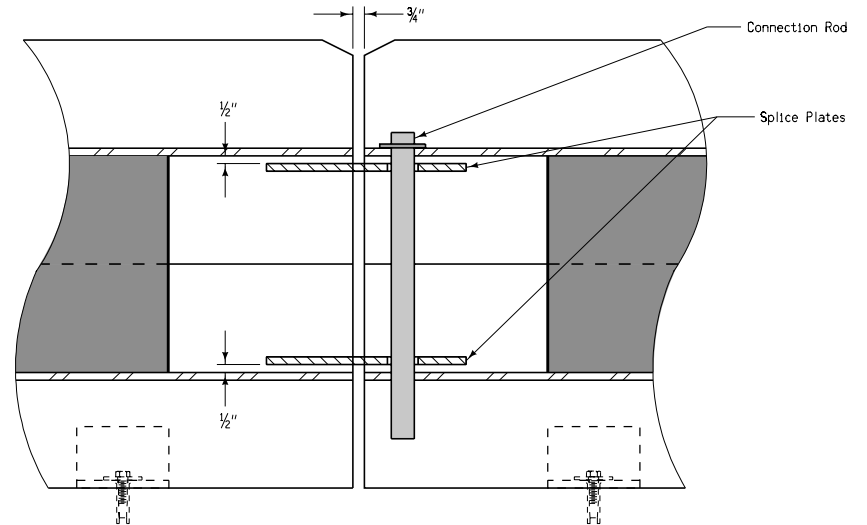
② Barrier Markers shall be furnished and installed by the Contractor. Markers shall be placed as shown on this sheet and attached to the barrier in a manner approved by the manufacturer. Markers shall face oncoming traffic and the color shall match the adjacent edge line. The Contractor shall maintain the markers and promptly repair or replace any damaged or missing units. All costs for furnishing, installing and maintaining markers shall be included in the price bid for "Temporary Barrier Rail, Steel."

Contract Item:
Temporary Barrier Rail, Steel
Tabulation:
108-33

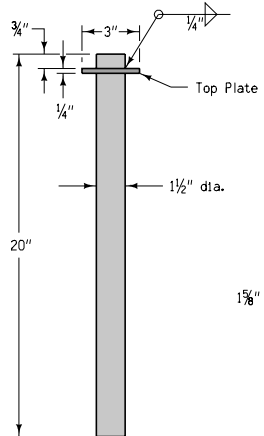
<p>Iowa Department of Transportation</p> <p>STANDARD ROAD PLAN</p> <p>REVISIONS: Added Table A.</p> <p><i>Deanna Macfady</i> APPROVED BY DESIGN METHODS ENGINEER</p> <p>TEMPORARY BARRIER RAIL (STEEL)</p>	<p>REVISION</p> <p>1 04-15-08</p>
	<p>RE-89</p> <p>SHEET 1 of 2</p>



**BARRIER CONNECTION
TOP SECTION**

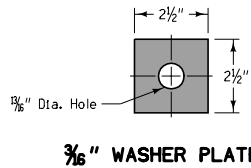


**BARRIER CONNECTION
SIDE SECTION**

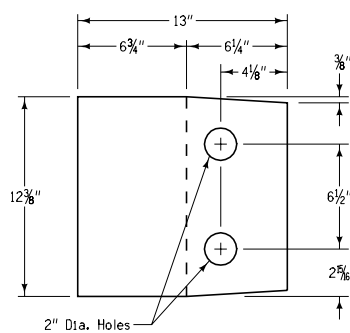


Connection Rod

CONNECTION ROD ASSEMBLY



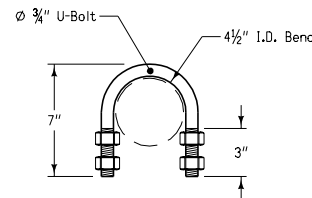
3/16" WASHER PLATE



1/2" SPLICE PLATE

**TABLE A
ANCHORAGE REQUIREMENTS**

Hazard	Dropoff	Min. offset where TBR is Unanchored	Min. offset where TBR is Anchored
Dropoff from pavement	≤ 24"	10"	6"
	> 24"	18"	6"
Dropoff from bridge	≤ 3"	1"	N/A
	> 3"	18"	6"
Fixed vertical object	N/A	10"	6"



LIFTING ASSEMBLY

Iowa Department of Transportation
STANDARD ROAD PLAN

REVISION
1 04-15-08
RE-89
SHEET 2 of 2

REVISIONS: Added table A.

Deanna Mielich
APPROVED BY DESIGN METHODS ENGINEER

**TEMPORARY BARRIER RAIL
(STEEL)**