

Price bid for "Bridge End Drain, RF-40" shall be considered full compensation for furnishing, installing, and constructing the Bridge End Drain as shown.

Contract Items:

- Paved Shoulder, P.C. Concrete
- Bridge End Drain, RF-40

Incidental to Paved Shoulder:

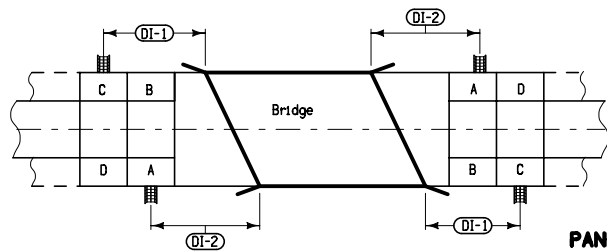
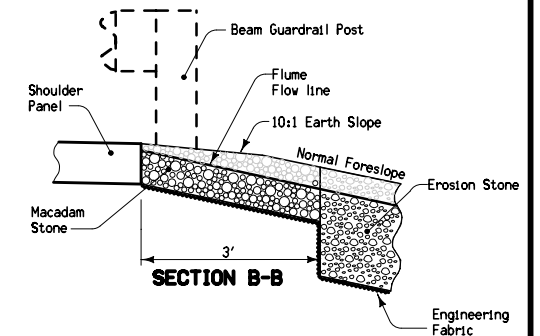
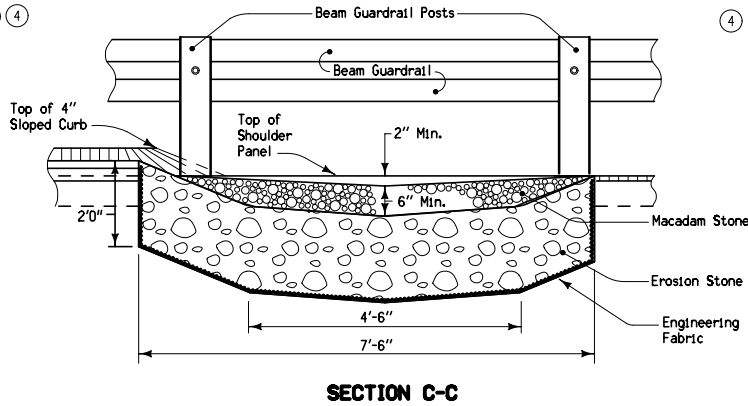
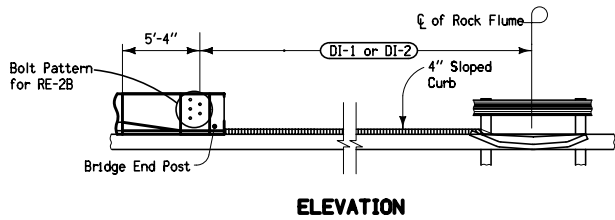
- Modified Subbase
- Polymer Grid

Incidental to Bridge End Drain:

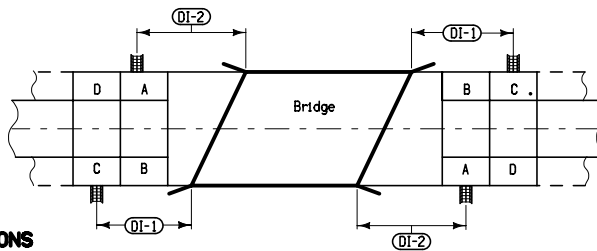
- Macadam Stone Base Material
- Erosion Stone
- Engineering Fabric
- Excavation, hauling, and disposing of material

Tabulation: 104-8A

- ① Paved shoulder panel will be paid for as, "Paved Shoulder, P.C. Concrete".
- ② Modified subbase and polymer grid shall be installed under shoulder panels as shown in Section A-A on Standard Road Plan RK-20, RK-25, or RK-26.
- ③ Rock flume shall be located 5 feet or more from the nearest transverse pavement joint. Joints are determined by the bridge approach section.
- ④ Rock flume shall extend to ditch bottom.



PANEL LOCATIONS



<p>Iowa Department of Transportation</p> <p>STANDARD ROAD PLAN</p> <p>REVISIONS: Added shading for Rock Flume.</p> <p style="text-align: right;"><i>Deanna McFalls</i> APPROVED BY DESIGN METHODS ENGINEER</p>	REVISION 5 04-21-09
	RF-40 SHEET 1 of 1
	ROCK FLUME FOR BRIDGE END DRAIN