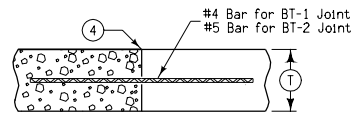


'B'
PLAIN JOINT
For Abutting Pavement Slabs

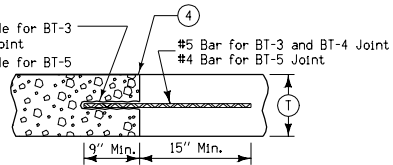


ABUTTING PAVEMENT JOINT - RIGID TIE

Where T is Less Than 8"
See Note ⑤ 'BT-1'
36" Long at 30" Centers

Where T is 8" or more
'BT-2'
36" Long at 30" Centers

3/4" Dia. Hole for BT-3 and BT-4 Joint
5/8" Dia. Hole for BT-5 Joint

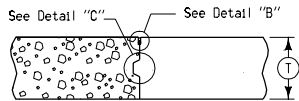


ABUTTING PAVEMENT JOINT - RIGID TIE

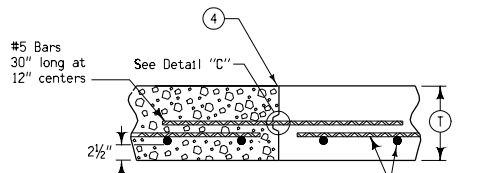
Where T is 8" or more
'BT-3'
24" Long at 30" Centers

'BT-4'
24" Long at 15" Centers

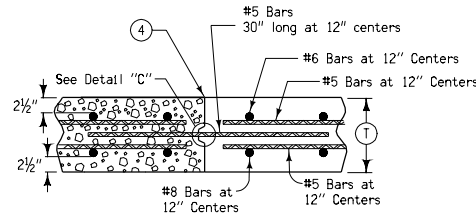
Where T is Less Than 8"
'BT-5'
24" Long at 30" Centers



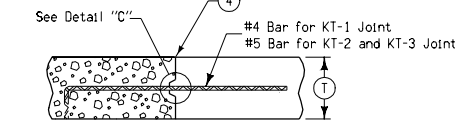
'K'
KEYED JOINT FOR ADJACENT SLABS
Where T is 8" or more



'KS-1'
Joint for Single
Reinforced Pavement
(Bridge Approach)



'KS-2'
Joint for Double
Reinforced Pavement
(Bridge Approach)



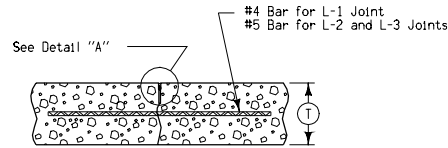
ABUTTING PAVEMENT JOINT - KEYWAY TIE

Where T is Less Than 8"
See Notes ① ⑤ 'KT-1'
30" Long at 30" Centers

Where T is 8" or more
See Notes ① ⑤ 'KT-2'
30" Long at 30" Centers

See Notes ① ⑤ 'KT-3'
30" Long at 15" Centers

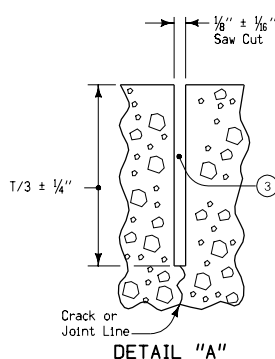
KEYWAY DIMENSIONS			
Keyway Type	Pavement Thickness	(A)	(B)
Standard	8" or greater	1 3/4"	2 3/4"
Narrow	Less than 8"	1"	2"



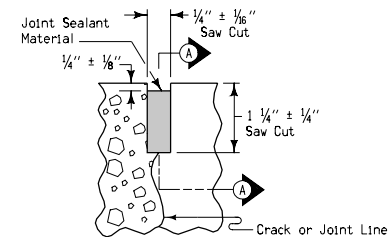
'L-1', 'L-2' and 'L-3'
Where T is Less Than 8"
See Note ⑤ 'L-1'
36" Long at 30" Centers

Where T is 8" or more
See Note ⑤ 'L-2'
36" Long at 30" Centers

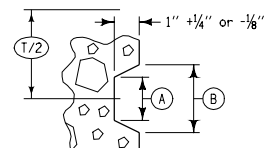
See Note ⑤ 'L-3'
36" Long at 15" Centers



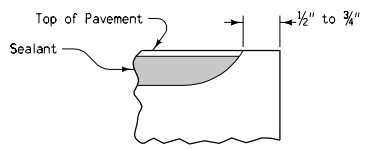
DETAIL "A"



DETAIL "B"

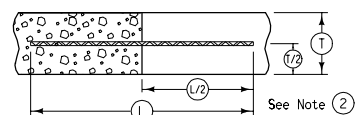


DETAIL "C"



SECTION A-A
Detail at Edge of Pavement

- Bar supports may be necessary for fixed form paving to insure the bar remains in a horizontal position in the plastic concrete.
- When tying into old pavement, (T) represents the depth of sound Portland Cement Concrete.
- Sealant or cleaning not required.
- Sawing or sealing of joint not required.
- The following joints are interchangeable, subject to the pouring sequence:
'BT-1', 'L-1' and 'KT-1'
'KT-2' and 'L-2'
'KT-3' and 'L-3'



TYPICAL TIE BAR PLACEMENT
Applies to all joints unless otherwise detailed.

	REVISION
	18 10-17-06
STANDARD ROAD PLAN	RH-51
REVISIONS: Added tolerances to sawcut depths.	SHEET 1 of 1
 APPROVED BY DESIGN METHODS ENGINEER	
JOINTS (LONGITUDINAL CONTRACTION)	