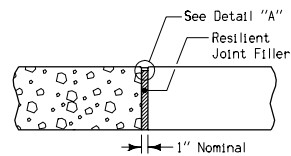
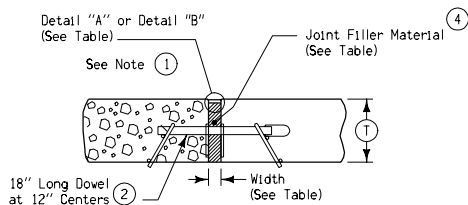


TYPE	WIDTH
CF-1	2"
CF-2	2½"
CF-3	3"
CF-4	3½"

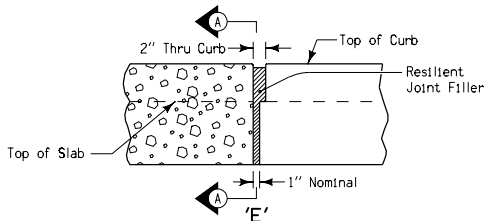


1" EXPANSION JOINT

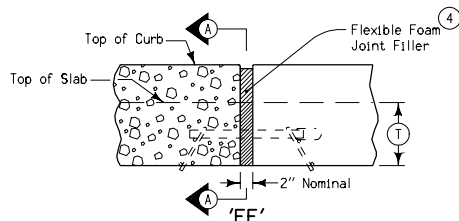


'ED', 'EE', 'EF'
DOWELED EXPANSION JOINT

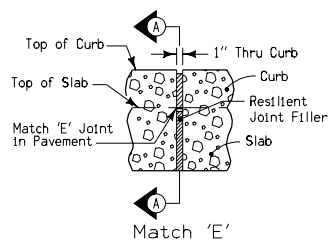
DOWELED EXPANSION JOINTS		
TYPE	WIDTH	FILLER MATERIAL (4)
ED	1"	Resilient (Detail "A")
EE	2"	Flexible Foam (Detail "A")
EF	3½"	Flexible Foam (Detail "B")



JOINT IN CURB
(View at Back of Curb)

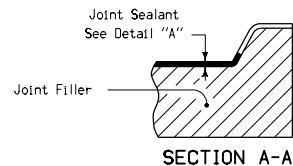


'EE'
JOINT IN CURB
(View at Back of Curb)

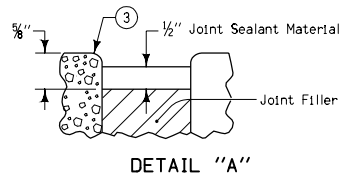


'ES'
JOINT IN CURB
(View at Back of Curb)

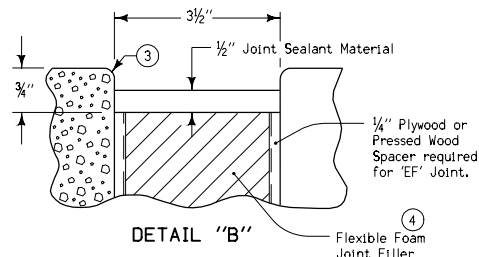
BAR SIZE TABLE			
(T)	<8"	>8" but <10"	≥10"
Dowel Diameter	¾"	1¼"	1½"



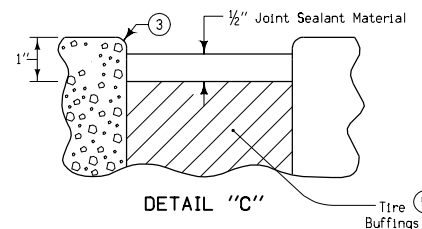
SECTION A-A



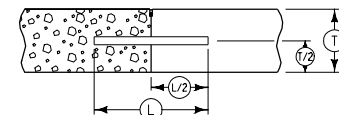
DETAIL "A"



DETAIL "B"



DETAIL "C"



TYPICAL DOWEL PLACEMENT
Applies to all joints unless otherwise detailed.

- See Standard Road Plan RH-55 for dowel assembly fabrication details and placement limits. The free end of dowel bar shall be coated to prevent bond with pavement. At intake locations, dowel bars may be cast-in-place.
- Refer to Bar Size Table.
- Edge with ¼" tool for length of joint indicated if formed; edging not required when cut with diamond blade saw.
- Holes for Joint Material shall be predrilled or preformed for appropriate dowel size.
- Compact tire buffings by spading with a square-nose shovel.

 Iowa Department of Transportation	REVISION
	14 04-17-07
	RH-52
STANDARD ROAD PLAN	
SHEET 1 of 1	
REVISIONS: Change reference from RH-64 to RH-55 and add note to compact tire buffings with a square-nose shovel.	
<i>Deanna Masfult</i> APPROVED BY DESIGN METHODS ENGINEER	
JOINTS (EXPANSION)	