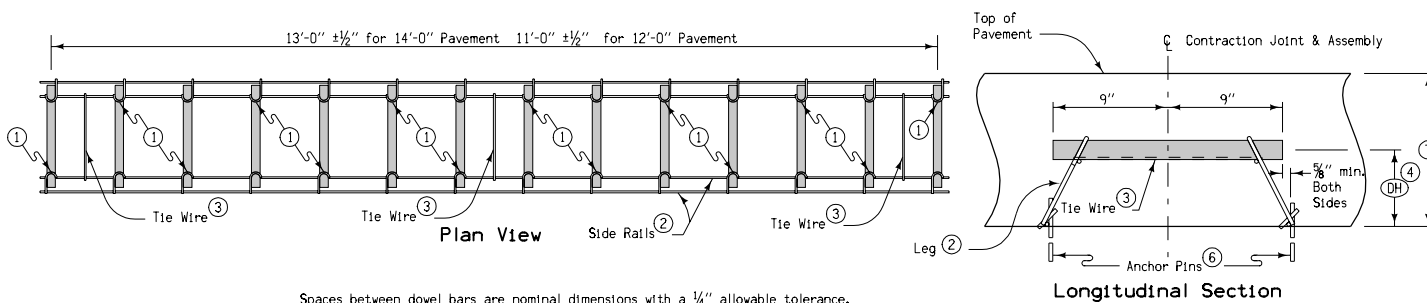
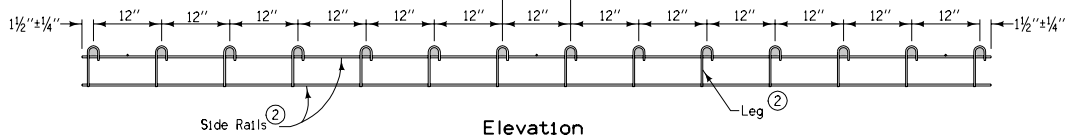


CONTRACTION JOINTS



Spaces between dowel bars are nominal dimensions with a 1/4" allowable tolerance.



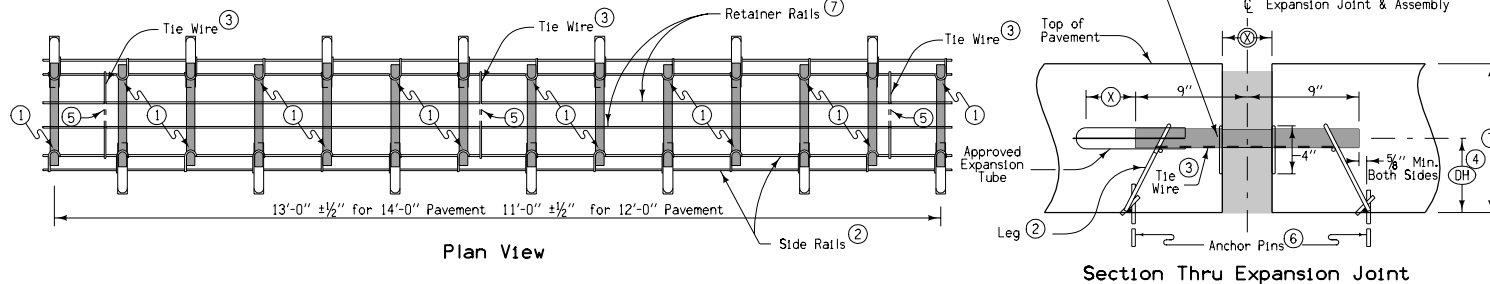
GENERAL NOTES:

Dowel bars shall be 18" long with a tolerance of ± 1/8". The centerline of individual dowels shall be parallel to the other dowels in the assembly within ± 1/8".

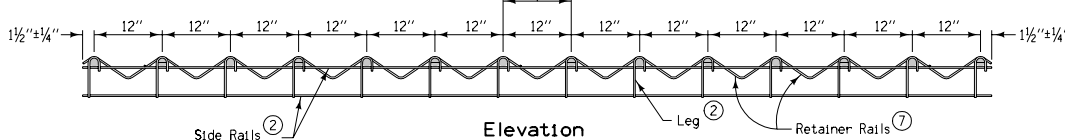
Wire sizes shown are the minimum required. Wires shall have a minimum tensile strength of 50 ksi.

- ① Weld alternately throughout.
- ② #1/0 gauge (0.306" diameter) wire.
- ③ #10 gauge (0.135" diameter) wire, welded or friction fit to upper side rail, both sides.
- ④ Measured from the centerline of dowel bar to bottom of lower side rail +1/4".
- ⑤ Clip and remove center portion of tie during field assembly.
- ⑥ Per lane width, a minimum of (8) anchor pins evenly spaced (4 per side), to prevent movement of assembly during construction. Assemblies placed on pavement or PCC base shall be anchored with devices approved by the Engineer.
- ⑦ 0.250 diameter wire.

EXPANSION JOINTS



Spaces between dowel bars are nominal dimensions with a 1/4" allowable tolerance.

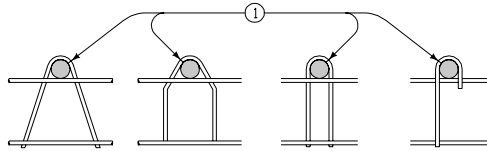


DOWEL HEIGHT AND DIAMETER		
T	DH	Diameter
7.0"-7.5"	3.5"	3/4"
8.0"-9.5"	4.25"	1 1/4"
10.0"-11.5"	5.25"	1 1/2"
12.0"-13.0"	6.25"	1 3/4"

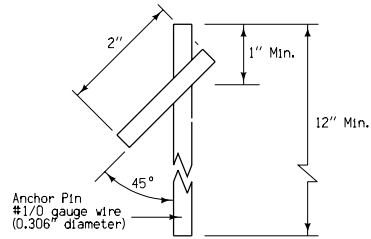
JOINT OPENING AND EXPANSION TUBE EXTENSION		
Joint Type	X	Minimum Tube Length
"E0"	1"	6"
"EE"	2"	7"
"EF"	4"	9"

	REVISION 6 10-17-06
	STANDARD ROAD PLAN SHEET 1 of 2
REVISIONS: Replaces paren-number standards with one multi-page standard.	
<i>Deanna Mayfield</i> APPROVED BY DESIGN METHODS ENGINEER	

DOWEL ASSEMBLIES



Optional Leg Shapes

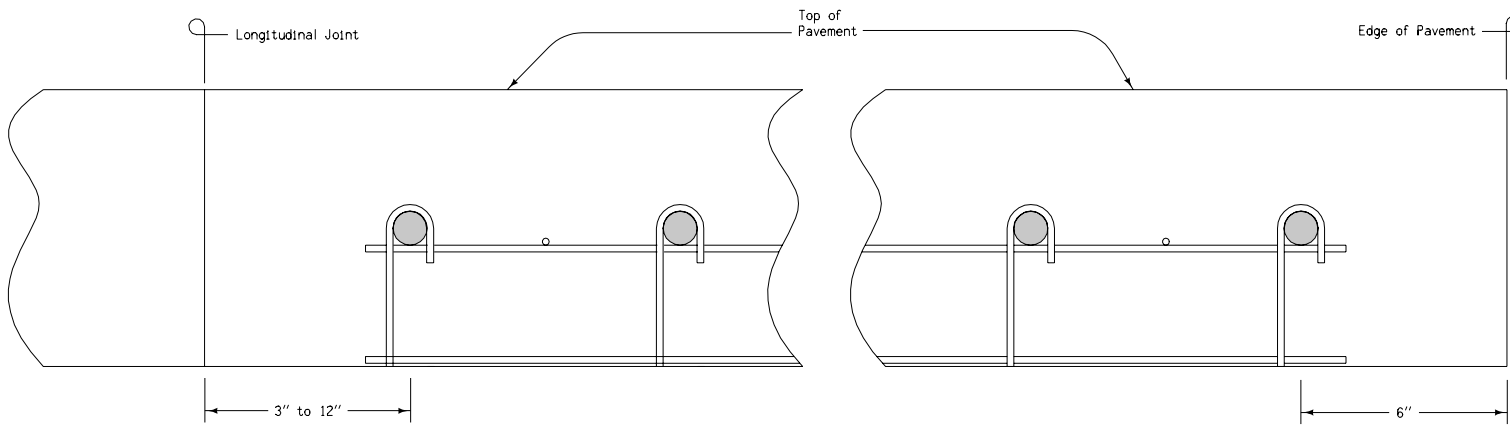


Anchor Pin Details


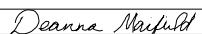
GENERAL NOTES:

Details indicated on this plan apply to both transverse contraction and expansion joints. For additional details, see Standard Road Plan RH-50 and RH-52.

① Diameter of bend around dowel is dowel diameter + 1/8" to 3/16".



Placement Limits

 Iowa Department of Transportation	REVISION	
	6	10-17-06
STANDARD ROAD PLAN	RH-55	
	SHEET 2 of 2	
<small>REVISIONS: Replaces paren-number standards with one multi-page standard.</small>		
 <small>APPROVED BY DESIGN METHODS ENGINEER</small>		
DOWEL ASSEMBLIES		