

Concrete used for the bridge approach section shall be the same as that used for remainder of project pavement.

Contract item:

Bridge Approach, RK-18  
Standard or Slip-Form PCC Pavement

Tabulation: 112-6

For joint details, see Standard Road Plans RH-50, RH-51, and RH-52.

Quantity for 20' long approach section for 24' pavement is 53.33 sq. yds. of "Bridge Approach."

JOINT TYPE FOR MOVABLE ABUTMENT BRIDGES		
Joint	Concrete Beam Maximum Bridge Length	Steel Girder Maximum Bridge Length
CF-1	370'	250'
CF-2	465'	320'
CF-3	575'	400'

Iowa Department of Transportation  
Highway Division

**STANDARD ROAD PLAN RK-18**

REVISION: Changed joint type on Section A-A to 'CD'.

REVISION NO.

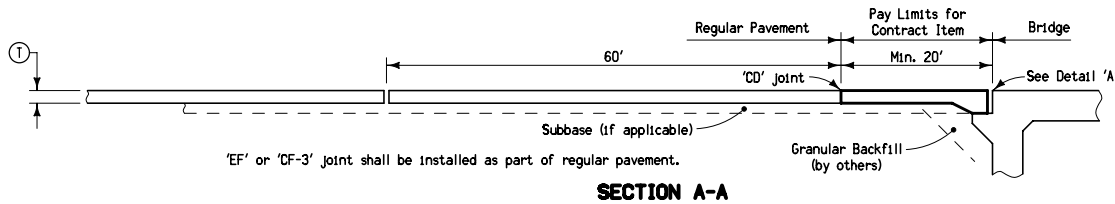
8

REVISION DATE

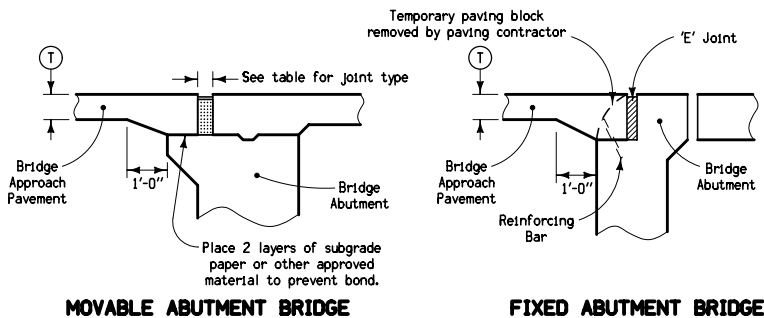
04-21-09

*Deanna McFalls*  
APPROVED BY DESIGN METHODS ENGINEER

**BRIDGE APPROACH DETAILS  
(SECONDARY ROADS)**

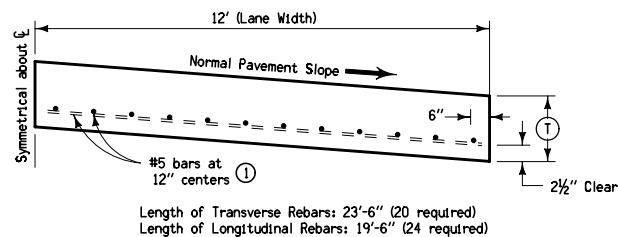


SECTION A-A



DETAIL 'A'

'T' is same thickness as is required for remainder of project pavement.



TYPICAL HALF SECTION B

① If bridge is skewed, place additional #5 bar parallel to skewed face.