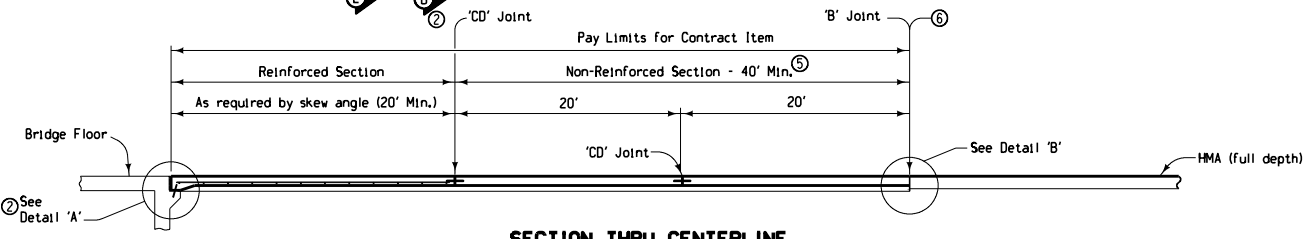
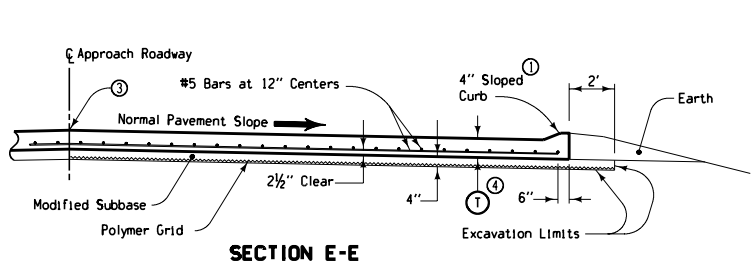


PLAN VIEW

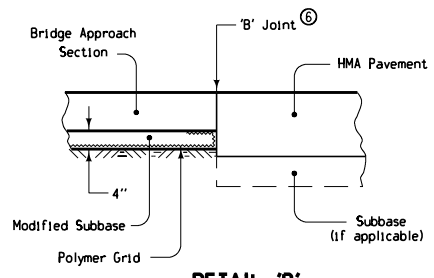
- ① Build 4" Sloped Curb to end of Reinforced Bridge Approach Sections. See Curb Location Details (Section B-B).
- ② See Standard Road Plan RK-19A.
- ③ Longitudinal Joints: (Standard Road Plan RH-51)
Single Pour - Saw cut joint per detail B.
Two Pours - Use 'KS-1' Joint.
- ④ T = 10 inches.
- ⑤ Minimum 2 panels, maximum 3 panels; 20' panel length, use 'CD' Joints.
- ⑥ The contractor may be required to saw cut the HMA pavement full depth to accommodate the 'B' joint.
- ⑦ Use 'RD' joint where PCC shoulder, 'B' joint otherwise.
- ⑧ Excavation limits of Modified Subbase 2' outside of pavement edge; see Standard Road Plan RK-19A.



SECTION THRU CENTERLINE



SECTION E-E



DETAIL 'B'

For joint details, see Standard Road Plans RH-50, RH-51, and RH-52.

 Iowa Department of Transportation	REVISION 16 10-21-08
	STANDARD ROAD PLAN RK-19J SHEET 1 OF 1
REVISIONS: Added label for centerline Approach Roadway.	
<i>Deanna Macfild</i> APPROVED BY DESIGN METHODS ENGINEER	
BRIDGE APPROACH SECTION (AT EXISTING BRIDGES, HMA PAVEMENT)	