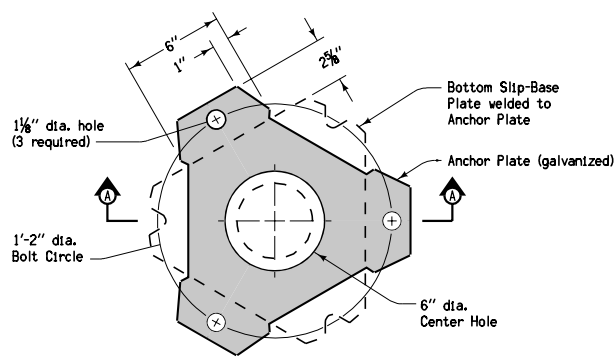
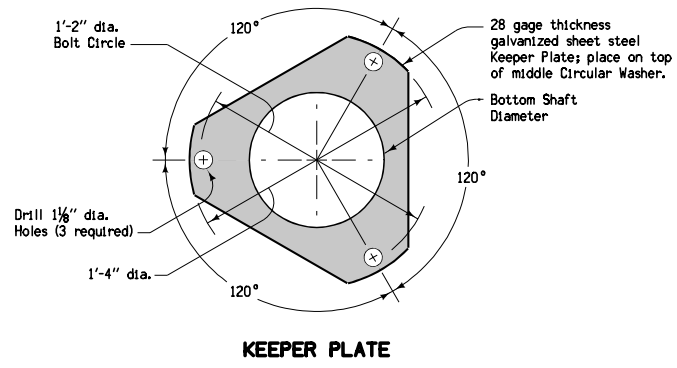


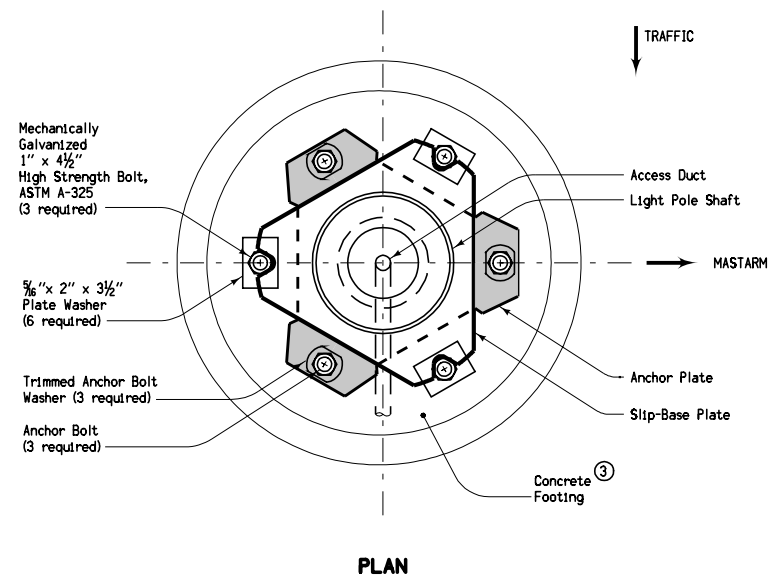
SLIP-BASE PLATE



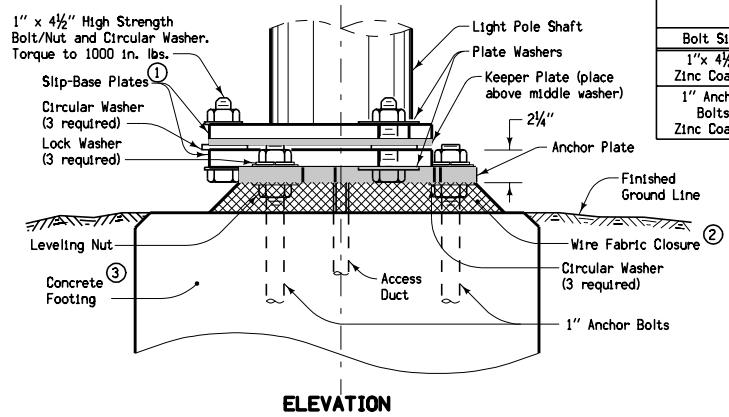
ANCHOR PLATE



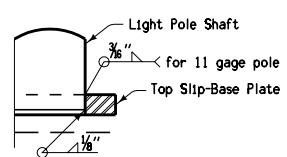
KEEPER PLATE



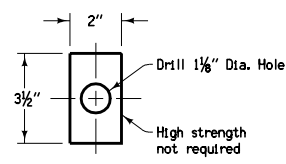
PLAN



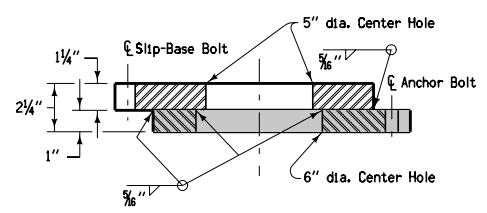
ELEVATION



TYPICAL HALF SECTION 'B'



- ① The top Slip-Base Plate shall be positioned to clear all Anchor Bolts.
- ② Wire fabric material shall comply with Materials I.M. 443.01. Wire fabric shall be placed around anchor bolt circle between concrete footing and base plate. The fabric shall fit tight to the bottom surface of the base plate and the top surface of the footing to prevent rodent entry.
- ③ Refer to RM-47 for footing details.



HARDWARE CLASSIFICATION				
Bolt Size	Bolt Grade	Nuts	Washers	Galvanizing
1" x 4 1/2" Zinc Coated	ASTM A-325 Zinc Coated	ASTM A-563-DH Zinc Coated	ASTM F-436 Zinc Coated	ASTM B-695 Class C-Type 1
1" Anchor Bolts Zinc Coated	ASTM F-1554 Grade 105 Zinc Coated	ASTM A-563-DH Zinc Coated	ASTM F-436 Zinc Coated	ASTM A-153 Class C

<p>Iowa Department of Transportation</p> <p>STANDARD ROAD PLAN</p> <p>REVISIONS: Added note 2 and 3.</p> <p><i>Deanna Macfield</i> APPROVED BY DESIGN METHODS ENGINEER</p>	REVISION 6 10-16-07
	RM-46 SHEET 1 of 1
SLIP BASE FOR LIGHT POLES	