

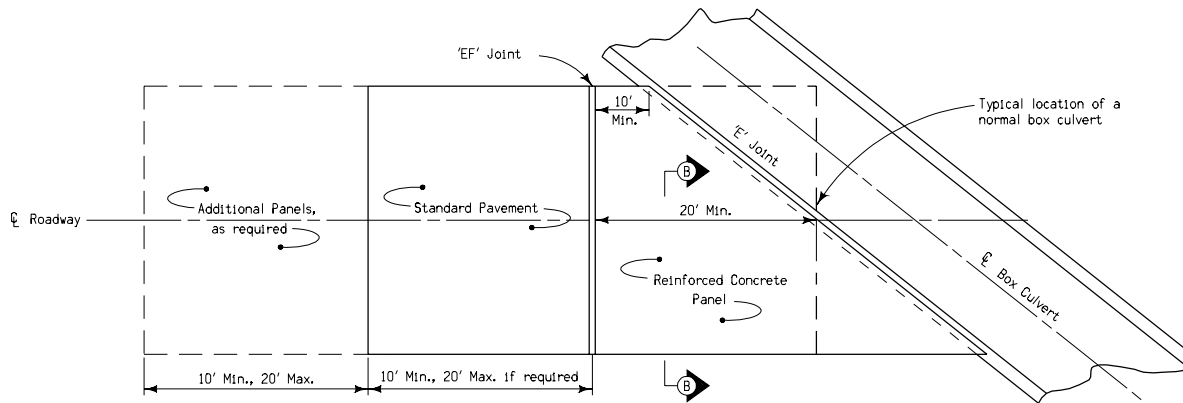
SECTION - TYPICAL INSTALLATION

Price bid for standard pavement of the specified thickness shall be considered full compensation for constructing the pavement as detailed, including all necessary reinforcement and expansion joints as required on this sheet.

NOTE:

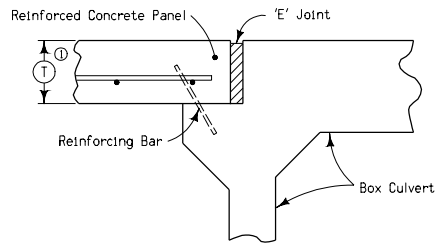
Quantity for 20 feet long by 24 feet wide Reinforced Concrete Panel is 53.3 square yards.

① Refer to plans for pavement thickness ①.

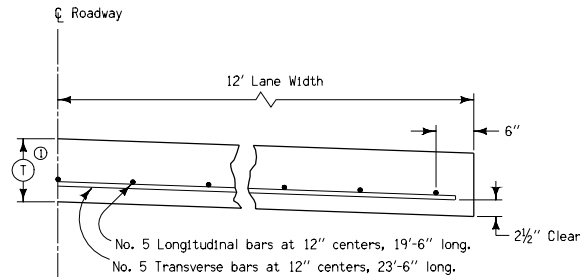


PLAN - TYPICAL INSTALLATION


For joint details, see Standard Road Plan RH-52.



DETAIL 'A'



SECTION B-B
Half Section

 Iowa Department of Transportation Highway Division	
STANDARD ROAD PLAN RR-24	
REVISION: Remove skewed joints; change title.	REVISION NO. 1
<i>William J. Allen</i> APPROVED BY DESIGN METHODS ENGINEER	REVISION DATE 04-19-05
REINFORCED CONCRETE PANEL AT BOX CULVERTS	