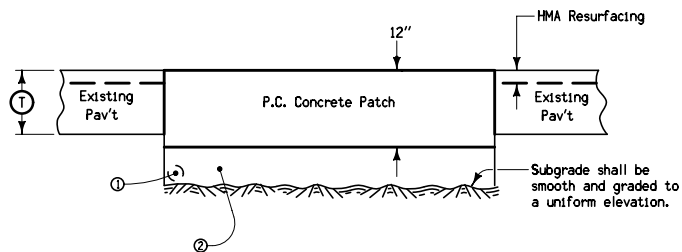
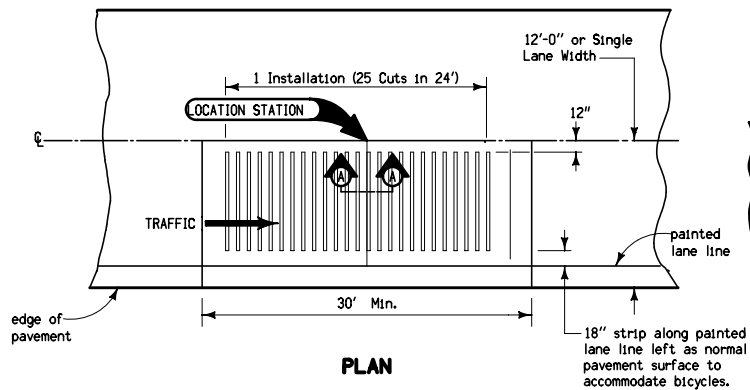


PAVEMENT REMOVAL DETAILS

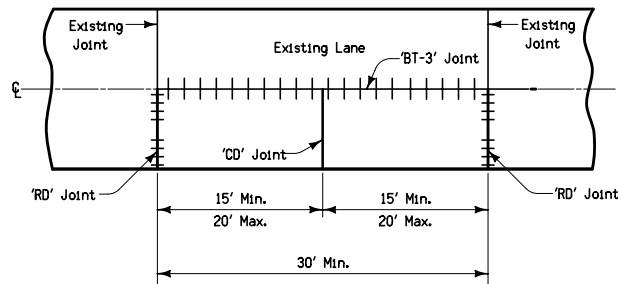


LONGITUDINAL SECTION



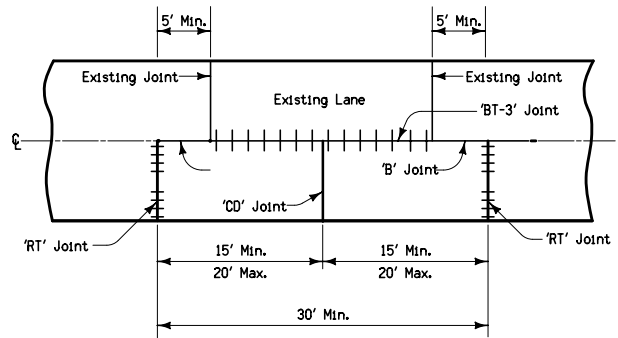
PLAN

MATCH CRACKS OR JOINTS IN ADJACENT LANE IF POSSIBLE



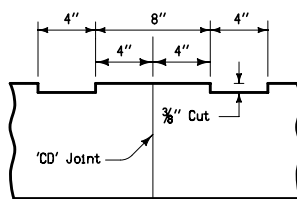
ONE LANE WIDTH PATCH

MATCHING EXISTING JOINT



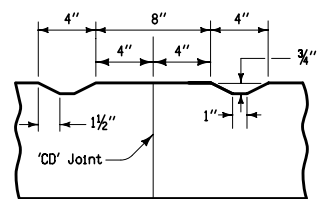
ONE LANE WIDTH PATCH

NO MATCHING EXISTING JOINT



SECTION A-A

RUMBLE STRIP CUT IN NEW P.C.C. CONCRETE



SECTION A-A

RUMBLE STRIP PLACED IN PLASTIC P.C.C. CONCRETE

If the existing pavement is full depth HMA, then a 'B' Joint shall be constructed around the perimeter of the patch.

The patch can be up to 14' wide if no new joint is being established or the patch does not lap over an old joint.

Price bid for "Rumble Strip Panel (In Full Depth Patch)," each, shall be full compensation for placing the rumble strips in the full depth patch.

- ① If longitudinal subdrain (shoulder) is not to be placed or if not present on side of roadway to be patched, then place proposed 3" slotted corrugated pipe at low end of patch.
- ② 6 inches granular subbase if required by plan. When placed, granular subbase should extend over longitudinal subdrain, if present.

For joint details, see Standard Road Plans RH-50 and RH-51.

Contract Items:

Patches, Full-Depth Finish, by Area
 Patches, Full-Depth Patches, by Count
 Rumble Strip Panel (In Full Depth Patch)
 CD Joint Assembly
 CT Joint

Tabulations:

102-8C
 112-7

| | |
|--|-----------------------------|
| Iowa Department of Transportation | REVISION 4 4-21-09 |
| | RR-7 SHEET 1 of 1 |
| REVISIONS: Added contract items: CD Joint Assembly and CT Joint. | |
| <i>Deanna Midfield</i> APPROVED BY DESIGN METHODS ENGINEER | |
| FULL DEPTH PCC RUMBLE STRIP PATCH | |