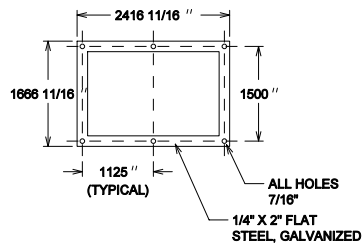
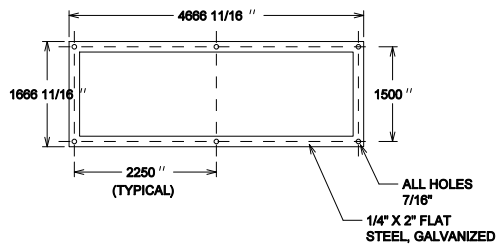


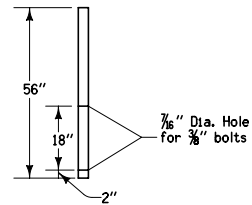
**AUXILLARY
SIGN MOUNTING BAR
Type 1**



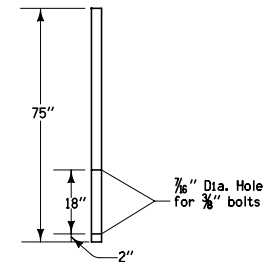
**ONE POST
SIGN MOUNTING BRACKET
Type 2**



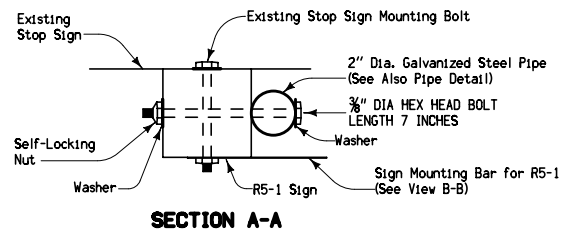
**TWO POST
SIGN MOUNTING BRACKET
Type 3**



**PIPE DETAIL
(Bracket 'F')
Type 4A**



**PIPE DETAIL
(Bracket 'F1')
Type 4B**



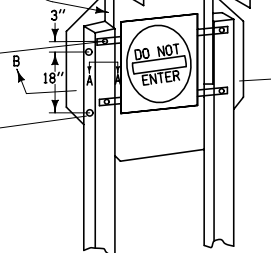
The necessary mounting bolts, washers, nuts, and set screws will be included in the bid price for the brackets.

 Iowa Department of Transportation	REVISION NEW 04-21-09
	SI-119 SHEET 1 of 2
REVISIONS: New.	
<i>Deanna Mairfeld</i> APPROVED BY DESIGN METHODS ENGINEER	
SUPPORT STRUCTURES - MOUNTING BRACKETS	

Attach R6-1A & R6-1C sign even with top of pipe using approved pipe post clamps. Mount sign perpendicular to approaching traffic.

2" ID Galvanized Steel Pipe
(See Section A-A for Detail of Attaching Pipe to Post).

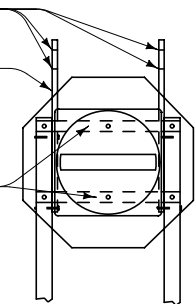
Field drill $\frac{7}{8}$ " dia. holes. Locate top hole 3" below and perpendicular to existing stop sign mounting bolt. Bottom hole will be 18" below top hole as shown.



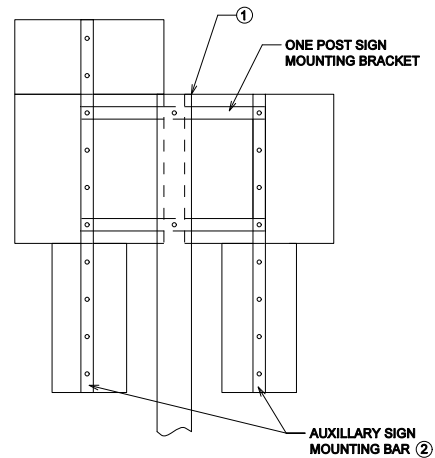
2" Post Clamps

Pipe Bracket 'F'

Bracket Assembly 'H'
(2 Sign Mounting Bars Required Per Sign)

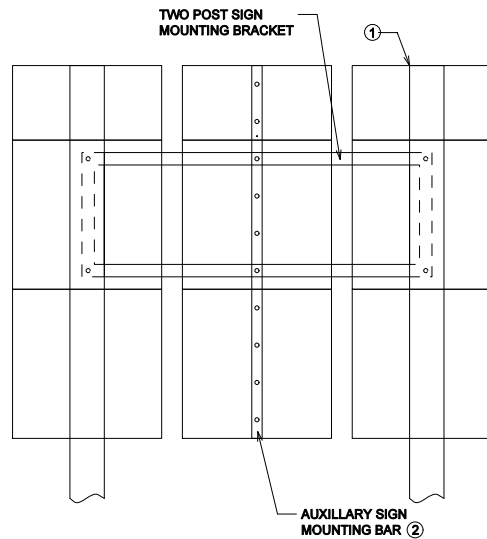


VIEW B-B




TYPICAL MOUNTING BRACKET ARRANGEMENT FOR SINGLE WOOD POST INSTALLATION

- ① Top of wood post to be flush with top of sign panel.
- ② Auxiliary Sign Mounting Bracket shall extend full length of proposed mounted sign assembly.



TYPICAL MOUNTING BRACKET ARRANGEMENT FOR DUAL WOOD POST INSTALLATION

 Iowa Department of Transportation	REVISION NEW 04-21-09
	SI-119 SHEET 2 of 2
REVISIONS: Nev.	
<i>Deanna Mifflin</i> APPROVED BY DESIGN METHODS ENGINEER	
SUPPORT STRUCTURES - MOUNTING BRACKETS	