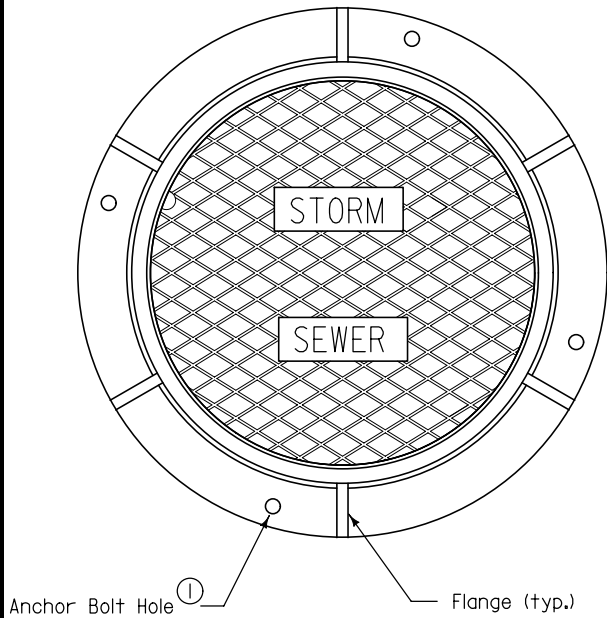
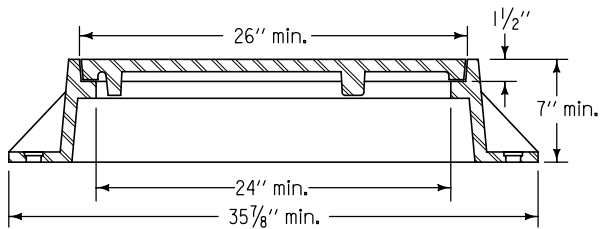


TYPE E
Two-piece fixed casting

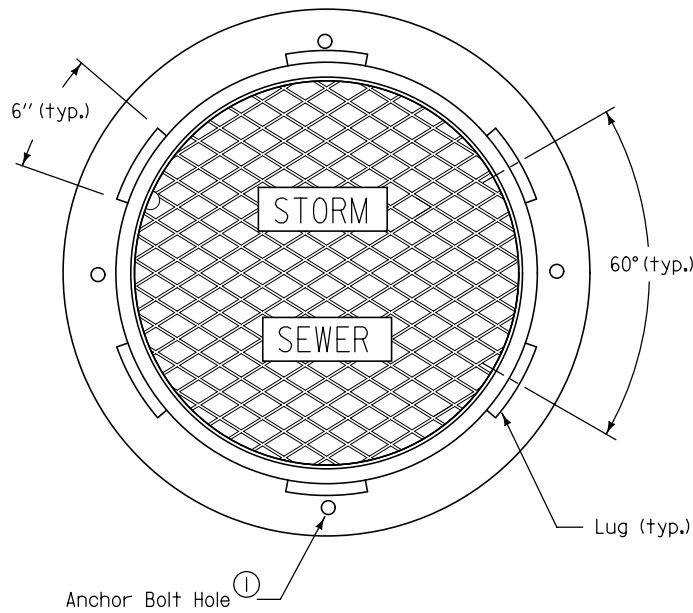


PLAN

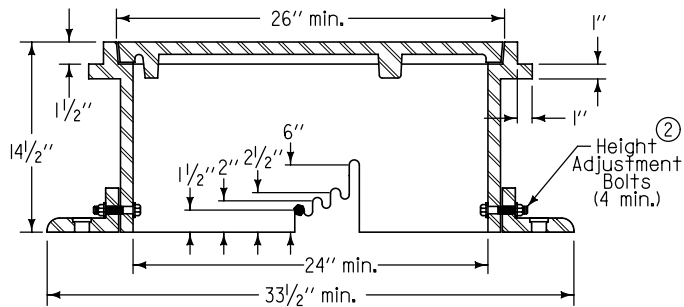


TYPICAL SECTION

TYPE F
Three-piece floating casting



PLAN



TYPICAL SECTION

Frame Notes:
Size and spacing of lugs and flanges may vary.

Cover Notes:
Roughness pattern and text styles may vary.
Minimum one concealed pickhole.

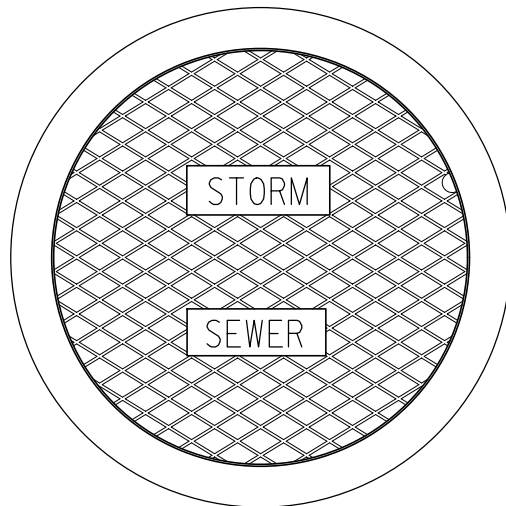
- ① If frame is required to be attached to structure, drill four 7/8" diameter holes or slots, equally spaced around frame.
- ② Remove bolts upon completion of paving.

FIGURE 6010.602 SHEET 1 OF 2

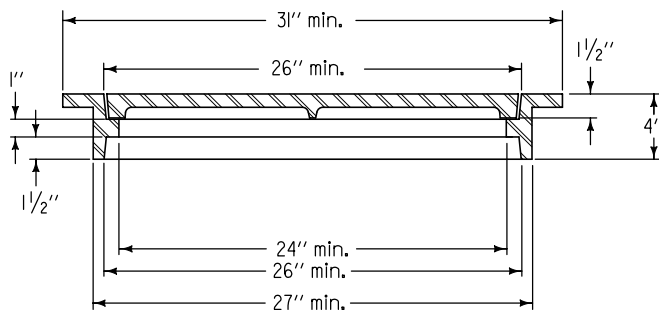
		REVISION
		NEW 04-21-09
FIGURE 6010.602	STANDARD ROAD PLAN	SW-602
		SHEET 1 of 2
REVISIONS: New. Replaces SUDAS Figures 6020.17, 6020.18, and 6020.19. Will replace RA-54.		
SUDAS DIRECTOR		DESIGN METHODS ENGINEER
CASTINGS FOR STORM SEWER MANHOLES		

TYPE G
Two-piece fixed casting

Cover Notes:
Roughness pattern and text style may vary.
Minimum one concealed pickhole.



PLAN



TYPICAL SECTION

FIGURE 6010.602 SHEET 2 OF 2

SUDAS	Iowa Department of Transportation	REVISION	
		NEW	04-21-09
FIGURE 6010.602	STANDARD ROAD PLAN	SW-602	
		SHEET 2 of 2	
REVISIONS: New. Replaces SUDAS Figures 6020.17, 6020.18, and 6020.19. Will replace RA-54.			
 SUDAS DIRECTOR		 DESIGN METHODS ENGINEER	

**CASTINGS FOR
STORM SEWER MANHOLES**