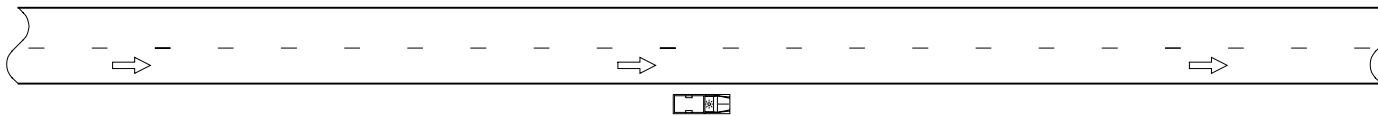
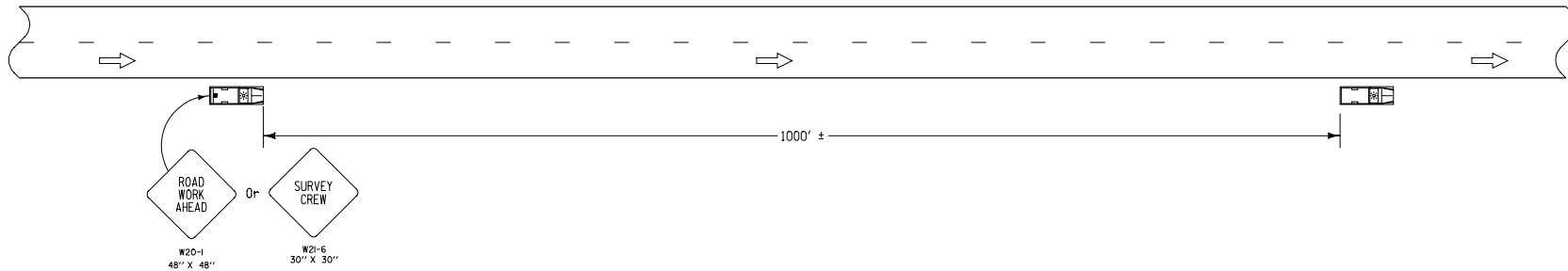


VEHICLE STOPPED ON SHOULDER FOR LESS THAN ONE HOUR^①



SLOW-MOVING OPERATION



Work shall not interfere with the flow of traffic.

When parked, vehicles shall be located as far from the open traffic lane as possible. Entrances and driveways should be used whenever appropriate.

All vehicles shall be equipped with an amber revolving light or an amber strobe light.

Contract Item:

Traffic Control

① For work lasting longer than one hour, use TC-202 or TC-402.

LEGEND

▬ Traffic Sign

← Direction of Traffic

<p>Iowa Department of Transportation</p>	REVISION	
	NEW	10-17-06
<p>STANDARD ROAD PLAN</p> <p>REVISIONS: Replaces RS-1 and RS-61, and Detail Sheets 520-50 and 521-50.</p>	<p>TC-1</p> <p>SHEET 1 of 1</p>	
	<p><i>Deanna Masfield</i></p> <p>APPROVED BY DESIGN METHODS ENGINEER</p>	
<p>WORK NOT AFFECTING TRAFFIC</p>		