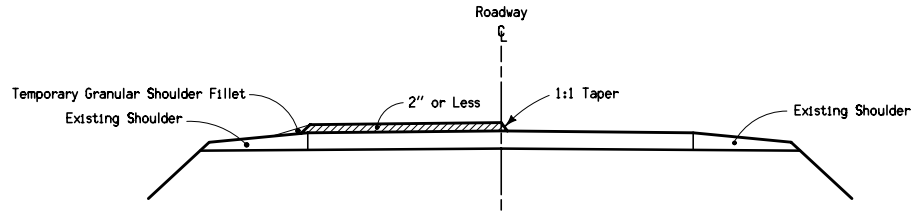
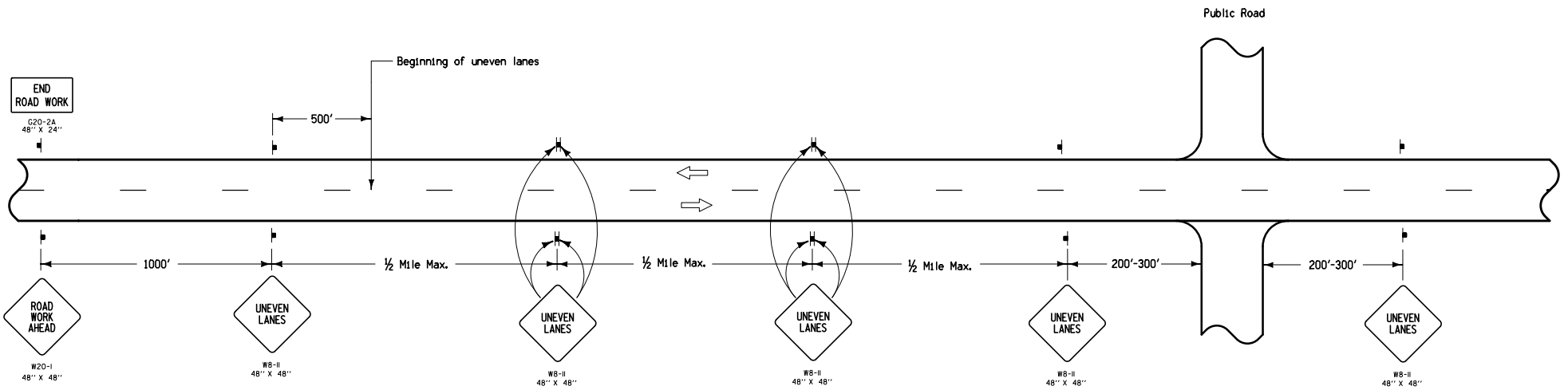
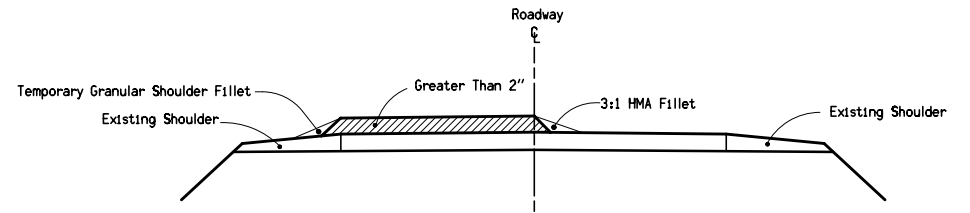


DESIGN LIFT THICKNESSES 2" OR LESS



DESIGN LIFT THICKNESSES GREATER THAN 2" (WITH FILLET)



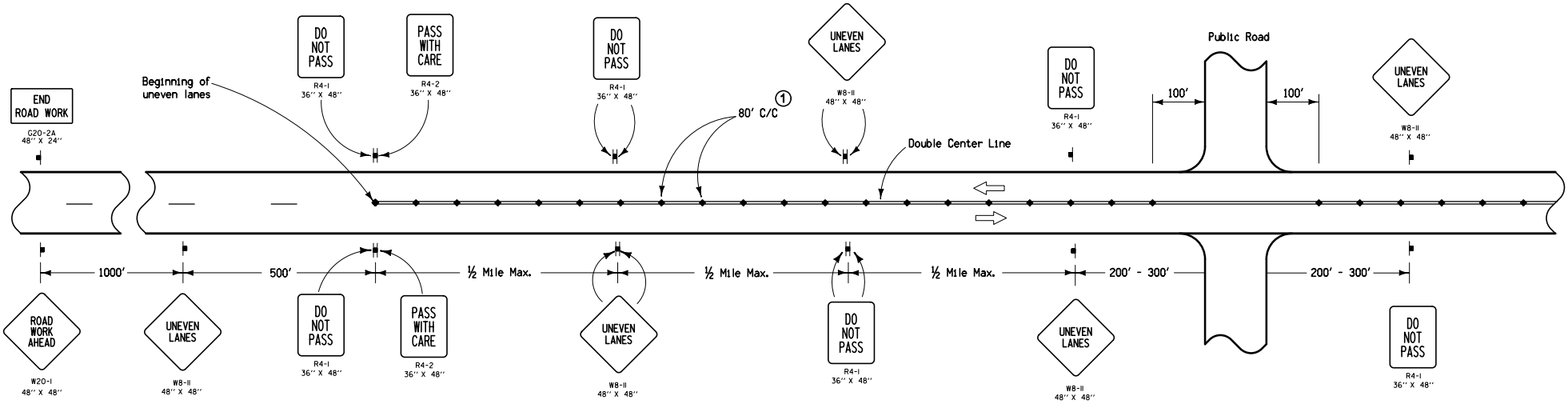
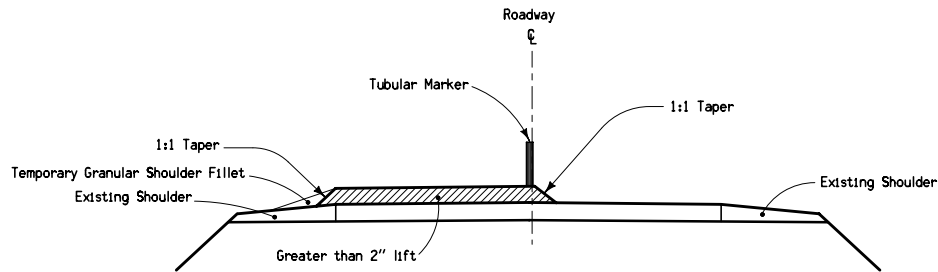
Contract Item:
Traffic Control

LEGEND

- † Traffic Sign
- ← Direction of Traffic

<p>Iowa Department of Transportation</p>	REVISION
	1 04-21-09
STANDARD ROAD PLAN	
TC-282	
SHEET 1 of 2	
REVISIONS: Changed contract item from Painted Pavement Markings to Pavement Markings Items.	
 APPROVED BY DESIGN METHODS ENGINEER	
UNEVEN LANES	

DESIGN LIFT THICKNESSES GREATER THAN 2" (WITHOUT FILLET)



"No-Passing" zones shall not exceed 2.5 miles for ADT less than 2500 vpd or 2.0 miles for ADT from 2500 to 5000 vpd.

① Spacing = 40 feet where horizontal curve radius is less than 1000 feet.

LEGEND

- ▬ Traffic Sign
- ↔ Direction of Traffic
- ◆ Tubular Marker

Contract Items:
Traffic Control
Pavement Marking Items
Tabulation: 108-22

<p>Iowa Department of Transportation</p>	<small>REVISION</small> 1 04-21-09
	<p>TC-282</p>
	<p>SHEET 2 of 2</p>
<small>REVISIONS: Changed contract item from Painted Pavement Markings to Pavement Marking Items.</small>	
<p><small>APPROVED BY DESIGN METHODS ENGINEER</small></p>	
<p>UNEVEN LANES</p>	