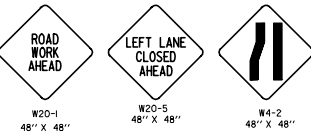
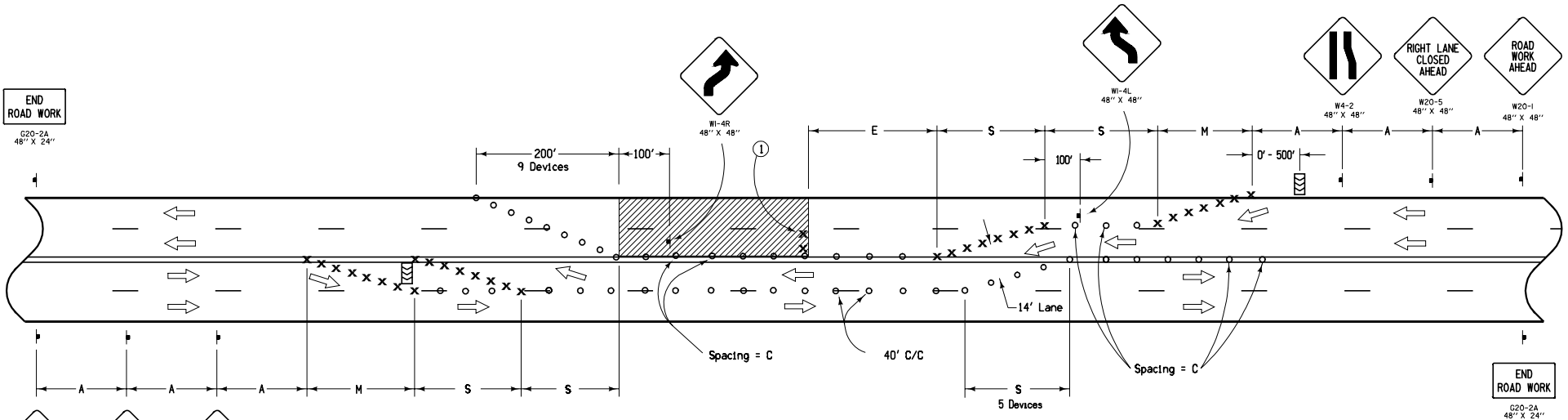


END ROAD WORK  
G20-2A  
48" X 24"



**LEGEND**

- † Traffic Sign
- x Drum ②
- o 42" Channelizer or Vertical Panel
- ▭ Arrow Panel
- ▨ Work Area
- ← Direction of Traffic

SPEED LIMIT (mph)	A	C	D	E	M	S
35 or less	250'	40'	35'	0'-200'	245'	140'
40	500'	80'	40'	0'-300'	320'	160'
45	700'	80'	45'	0'-400'	630'	315'
50	700'	80'	45'	400'	630'	315'
55 - 60	1000'	100'	55'	600'	770'	385'

When this layout is used during nighttime hours and the width of the traffic lanes are 11' or less, the Contractor shall use tubular markers to separate head-to-head traffic.

- ① Place two drums in the closed lane at 1000-foot intervals. Where core outs, holes, or uncured concrete exists within the work area, place an additional pair of drums just ahead of each.
- ② Spacing = D for all drums.

Contract Item:  
Traffic Control

<p>Iowa Department of Transportation</p> <p><b>STANDARD ROAD PLAN</b></p> <p>REVISIONS: Modified speed limit table values and variables.</p> <p><i>Deanna Macfadyen</i> APPROVED BY DESIGN METHODS ENGINEER</p> <p><b>CLOSURE OF TWO ADJACENT LANES ON UNDIVIDED HIGHWAY</b></p>	<p>REVISION</p> <p>2   10-21-08</p>
	<p><b>TC-423</b></p> <p>SHEET 1 of 1</p>