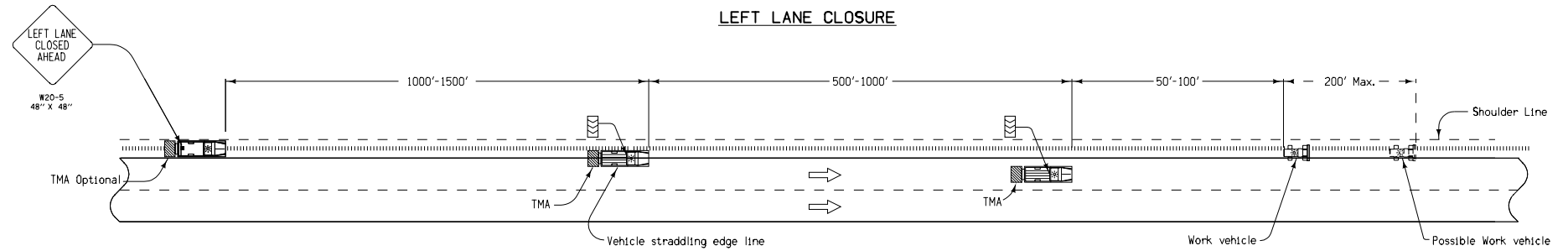
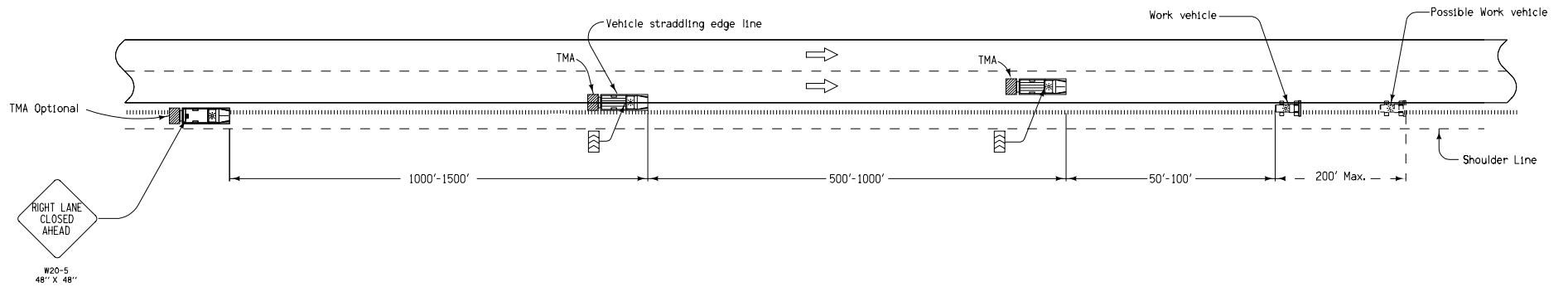





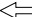
LEFT LANE CLOSURE



RIGHT LANE CLOSURE



LEGEND

-  Traffic Sign
-  Arrow Panel
-  Truck Mounted Attenuator (TMA)
-  Direction of Traffic

All vehicles shall be equipped with an amber revolving light or an amber strobe light.

When fog sealing the milled rumble strips, place a 48" X 48" FRESH OIL sign (W21-2) at the beginning of the work area. Place additional FRESH OIL signs after each intersection and periodically through the work area so that signs are no more than 2 miles apart.

Operators should adjust their spacing, as necessary, to keep adjacent vehicles within view.

Contract Item:
Traffic Control

 Iowa Department of Transportation STANDARD ROAD PLAN	REVISION
	NEW 10-17-06
TC-432	SHEET 1 of 1
REVISIONS: Replaces RS-41.	

Deanna Marjuff
APPROVED BY DESIGN METHODS ENGINEER

SHOULDER RUMBLE STRIP OPERATIONS