

LEGEND

- Crash Cushion
- Traffic Sign
- × Drum
- 42" Channelizer or Vertical Panel
- ◇ Channelizer Marker
- ◆ Tubular Marker
- Type III Barricade
- ▨ Sequencing Arrow
- Orange Mesh Safety Fence
- Temporary Floodlighting
- ▨ Work Area
- ← Direction of Traffic
- ▨ Detour Pavement

- ① Refer to RD-65 for sign details.
- ② Refer to Typical 9016 for arrow details.
- ③ Speed Limit signs shall be space at one-mile intervals.
- ④ An additional supplemental plate with the message NEXT X MILES shall be installed on the Two Way Traffic symbol sign assembly on the right side of the roadway to inform motorists of the remaining length of two lane traffic. The number shall be to the nearest whole-mile increment. This shall be required for both directions of traffic.
- ⑤ Temporary Crash Cushion. Refer to RE-85 for approved sand barrel layouts.

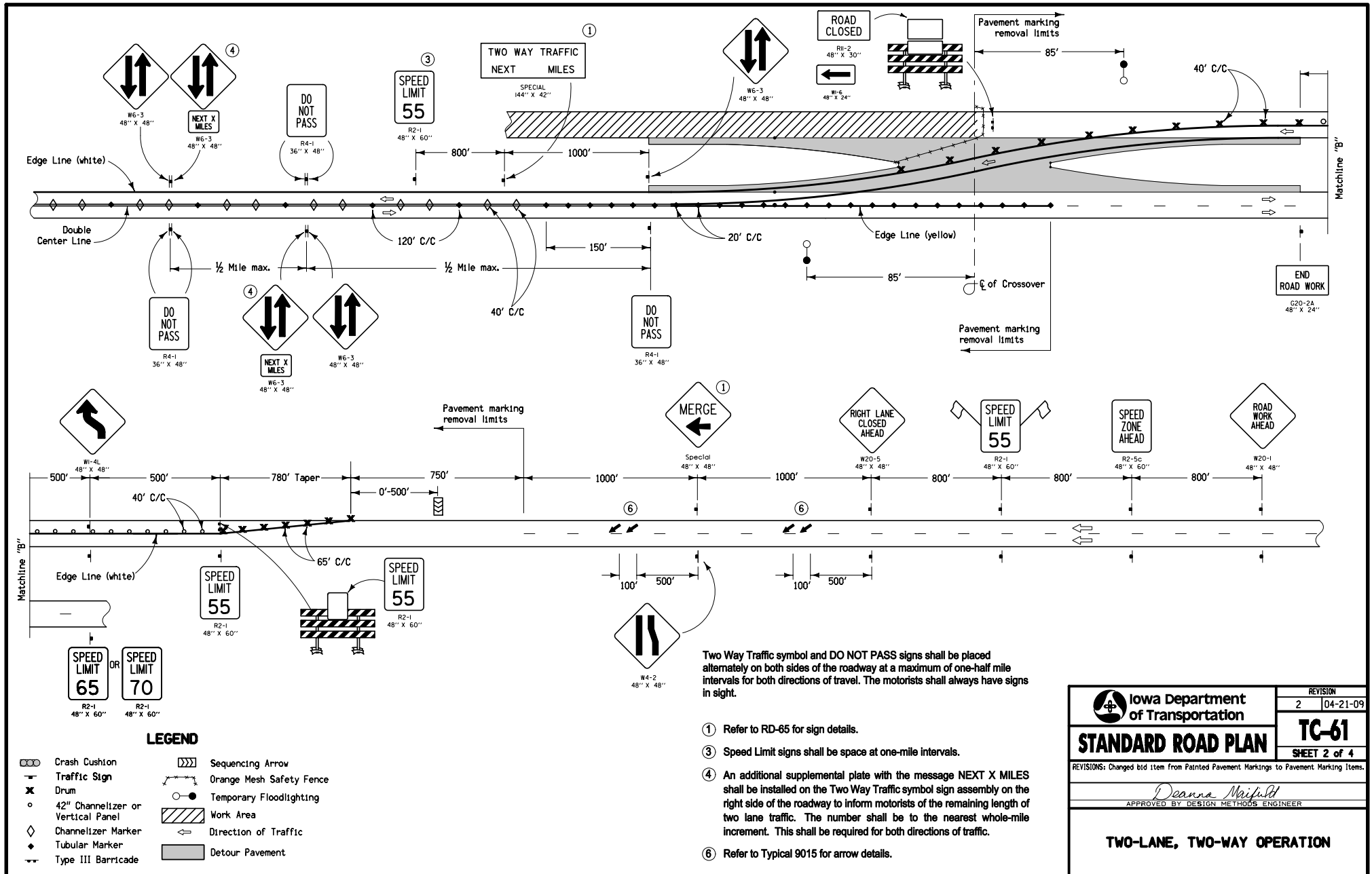
Two Way Traffic symbol and DO NOT PASS signs shall be placed alternately on both sides of the roadway at a maximum of one-half mile intervals for both directions of travel. The motorists shall always have signs in sight.

Contract Items:

- Traffic Control
- Safety Closures
- Raised Pavement Markings
- Painted Symbols and Legends
- Pavement Markings Removed
- Temporary Barrier Rail
- Temporary Crash Cushions
- Temporary Floodlighting

Tabulations: 108-13A, 108-22, 108-27, 108-29, 108-30, 108-33

 Iowa Department of Transportation	REVISION 2 04-21-09
	TC-61
STANDARD ROAD PLAN	SHEET 1 of 4
REVISIONS: Changed bid item from Painted Pavement Marking to Pavement Marking Items.	
<i>Deanna Mailhot</i> APPROVED BY DESIGN METHODS ENGINEER	
TWO-LANE, TWO-WAY OPERATION	



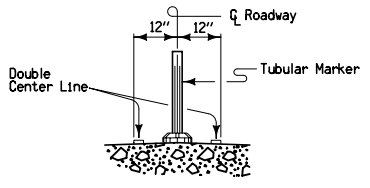
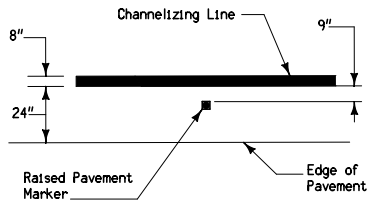
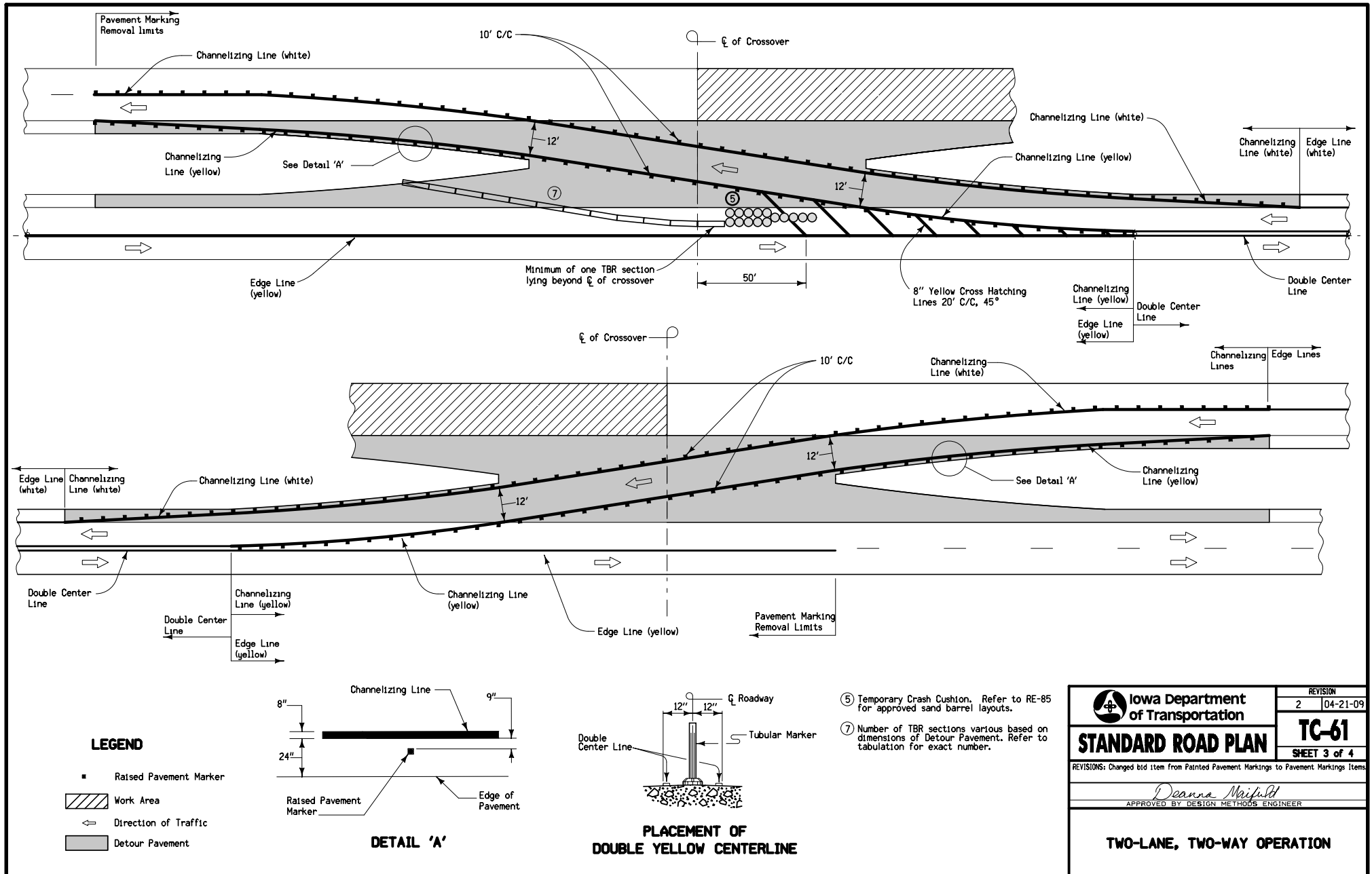
LEGEND

- Crash Cushion
- Traffic Sign
- ⊗ Drum
- 42" Channelizer or Vertical Panel
- ◇ Channelizer Marker
- ◆ Tubular Marker
- Type III Barricade
- ▭ Sequencing Arrow
- ▭ Orange Mesh Safety Fence
- Temporary Floodlighting
- ▨ Work Area
- ↔ Direction of Traffic
- ▭ Detour Pavement

Two Way Traffic symbol and DO NOT PASS signs shall be placed alternately on both sides of the roadway at a maximum of one-half mile intervals for both directions of travel. The motorists shall always have signs in sight.

- ① Refer to RD-65 for sign details.
- ③ Speed Limit signs shall be space at one-mile intervals.
- ④ An additional supplemental plate with the message NEXT X MILES shall be installed on the Two Way Traffic symbol sign assembly on the right side of the roadway to inform motorists of the remaining length of two lane traffic. The number shall be to the nearest whole-mile increment. This shall be required for both directions of traffic.
- ⑥ Refer to Typical 9015 for arrow details.

 Iowa Department of Transportation	REVISION 2 04-21-09
	STANDARD ROAD PLAN
REVISIONS: Changed bid item from Painted Pavement Markings to Pavement Marking Items.	
<i>Deanna Midland</i> APPROVED BY DESIGN METHODS ENGINEER	
TWO-LANE, TWO-WAY OPERATION	



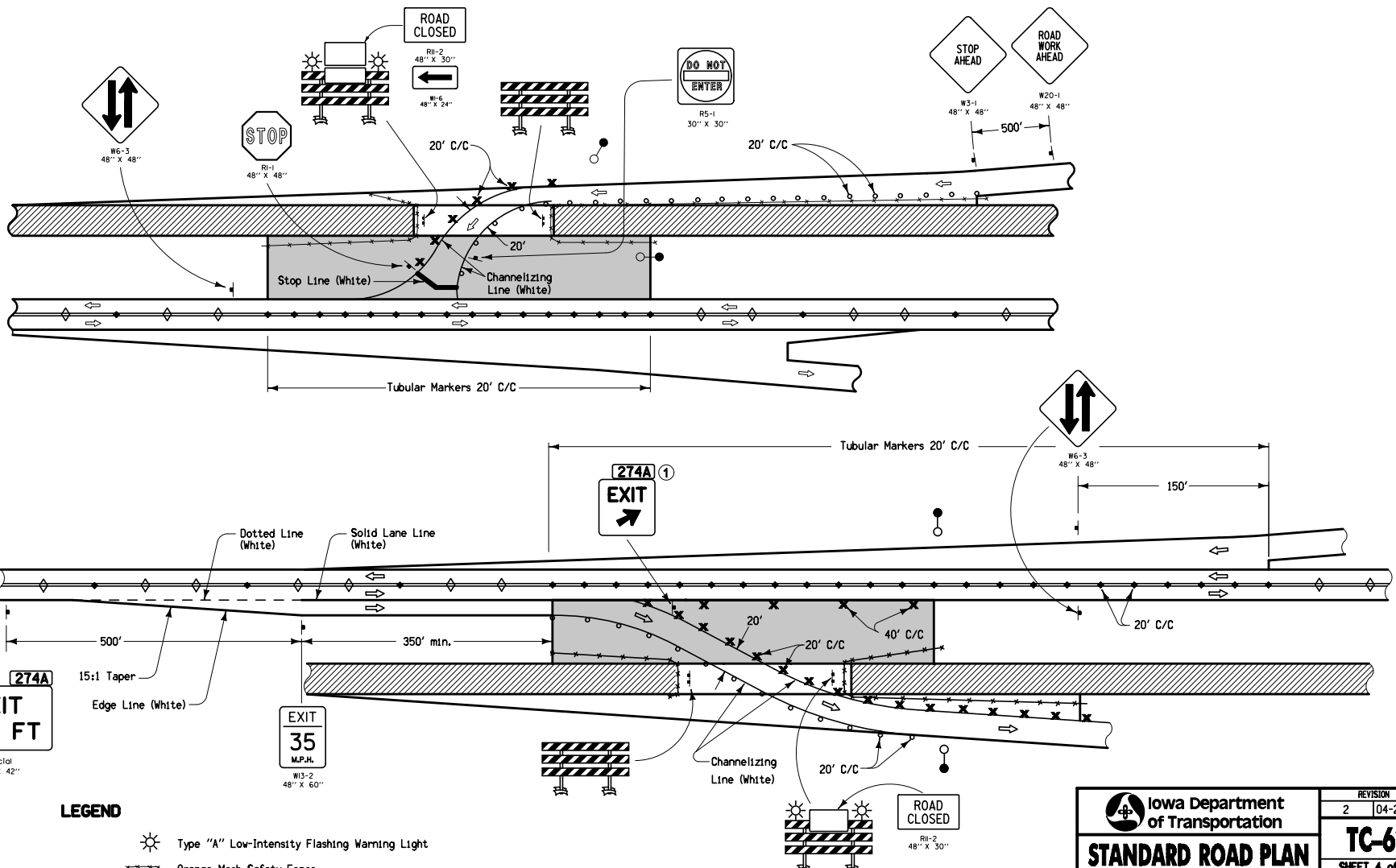
- ⑤ Temporary Crash Cushion. Refer to RE-85 for approved sand barrel layouts.
- ⑦ Number of TBR sections various based on dimensions of Detour Pavement. Refer to tabulation for exact number.

- LEGEND**
- Raised Pavement Marker
 - ▨ Work Area
 - ⇐ Direction of Traffic
 - ▭ Detour Pavement

 Iowa Department of Transportation	<small>REVISION</small> 2 04-21-09
	TC-61 <small>SHEET 3 of 4</small>
	<small>REVISIONS: Changed bid item from Painted Pavement Markings to Pavement Markings Items</small>
<i>Deanna Midfield</i> <small>APPROVED BY DESIGN METHODS ENGINEER</small>	
TWO-LANE, TWO-WAY OPERATION	

CROSSOVER AT ENTRANCE RAMP

CROSSOVER AT EXIT RAMP



LEGEND

- ↑ Traffic Sign
- ⊗ Drum
- 42" Channelizer or Vertical Panel
- ◇ Channelizer Marker
- ◆ Tubular Marker
- ↑ Type III Barricade
- ☀ Type "A" Low-Intensity Flashing Warning Light
- Orange Mesh Safety Fence
- Temporary Floodlighting
- ▨ Work Area
- ▭ Detour Pavement
- ⇐ Direction of Traffic

① Refer to RD-65 for sign details.

<p>Iowa Department of Transportation</p> <p>STANDARD ROAD PLAN</p> <p>REVISIONS: Changed bid item from Painted Pavement Markings to Pavement Marking Items.</p> <p style="text-align: right;"><i>Deanna McFalls</i> APPROVED BY DESIGN METHODS ENGINEER</p> <p style="text-align: center;">TWO-LANE, TWO-WAY OPERATION</p>	REVISION
	2 04-21-09
	TC-61
	SHEET 4 of 4