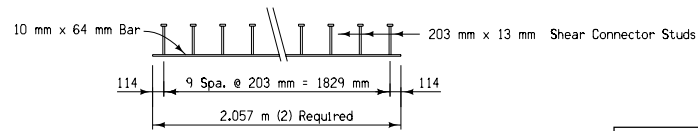
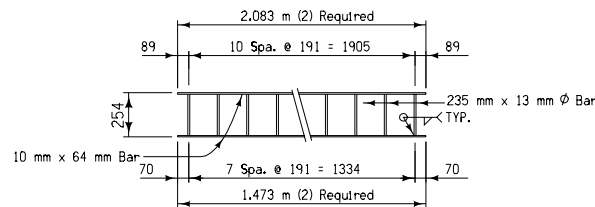


LID PLAN



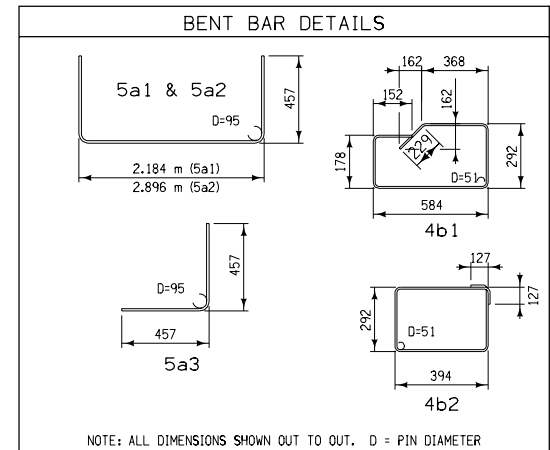
FRAME RING EDGE ARMOR DETAIL



WALL EDGE ARMOR DETAIL

All edge armor steel to be ASTM A36, hot dip galvanized after fabrication.

BILL OF REINFORCING STEEL					
THREE GRATE INTAKE LID - EPOXY COATED					
BAR	LOCATION	SHAPE	NO.	LENGTH	MASS
5a1	Lid, Longitudinal	L	8	3099	39
5a2	Lid, Transverse	L	10	3810	59
5a3	Lid, Interior, Corners	L	4	914	6
4b1	Lid Hoop	U	14	1803	25
4b2	Lid Hoop	U	8	1626	13
EPOXY COATED REINFORCING STEEL - TOTAL					142

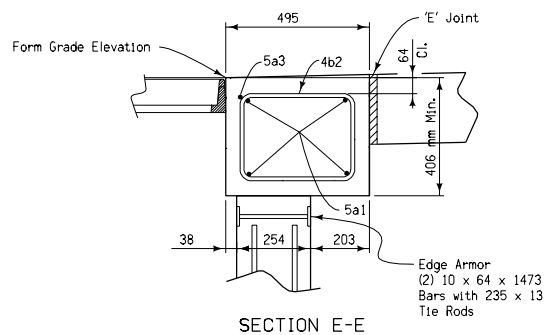


NOTE: ALL DIMENSIONS SHOWN OUT TO OUT. D = PIN DIAMETER

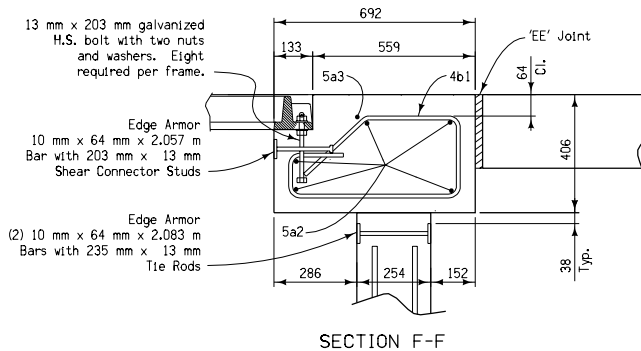
QUANTITY SUMMARY FOR THREE GRATE INTAKE LID	
Concrete	2.0 m <sup>3</sup>
Epoxy Coated Reinforcing Steel	142 kg

The clear distance from face of concrete to near edge or end of reinforcing bar to be 51 mm unless otherwise noted.

All dimensions given in millimeters unless noted.



SECTION E-E



SECTION F-F

<b>M</b> <b>METRIC VERSION</b>	 <b>STANDARD ROAD PLAN</b>	REVISION 1   10-17-06
		<b>RA-47A(3)</b> SHEET 3 of 4
	<i>Deanna Mayfield</i> APPROVED BY DESIGN METHODS ENGINEER	
	<b>TRIPLE GRATE BARRIER INTAKE</b>	