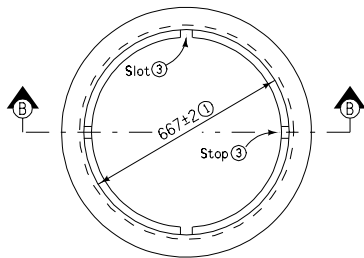
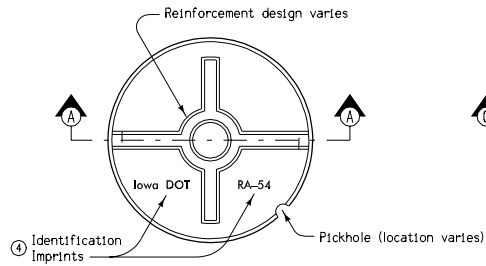


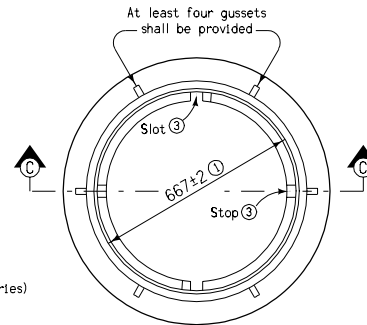
PLAN OF COVER TOP



PLAN OF FRAME

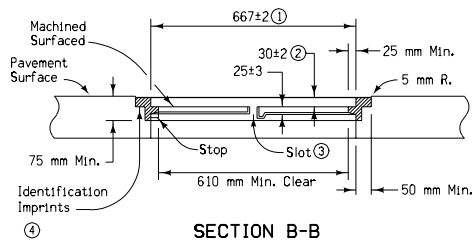


PLAN OF COVER BOTTOM



PLAN OF FRAME

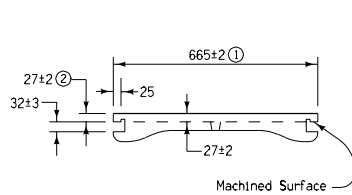
- ① Machining of vertical surfaces will be allowed if needed to conform to dimensional requirements.
- ② After machining.
- ③ Slots and stops for retaining lug are to be provided at 180 degrees as shown.
- ④ An identification imprint "Iowa DOT RA-54" shall be placed on each frame and cover.



SECTION B-B

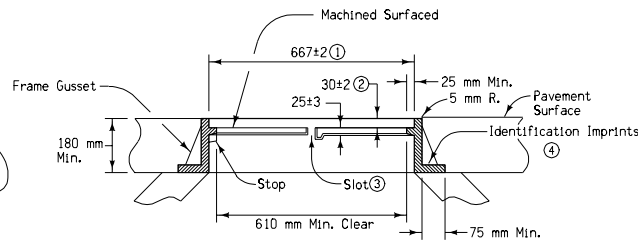
TYPE 1 FRAME

SLAB TYPE FOR CAST UTILITY ACCESSSES



SECTION A-A

COVER DETAILS



SECTION C-C

TYPE 2 FRAME

NECK BEARING TYPE FOR BUILT-UP UTILITY ACCESSSES

MINIMUM MASS		
	Frame	Cover
Type 1	68 kg	66 kg
Type 2	104 kg	66 kg

All dimensions given in millimeters unless noted.

METRIC VERSION		
	STANDARD ROAD PLAN RA-54	
	REVISION: Add Circle Note 4 and Change Title.	REVISION NO. 2
	<i>William J. Sten</i> APPROVED BY DESIGN METHODS ENGINEER	
	REVISION DATE 10-19-04	
CAST UTILITY ACCESS COVER - HEAVY (SUBJECT TO ROADWAY TRAFFIC)		